

The Bighorn Backcountry is managed to ensure protection of the environment, while allowing responsible recreation use. It is your responsibility to know what, where and when activities are permitted in the area. For additional details refer to the Bighorn Backcountry brochure.

The Nordegg area contains a large trail network. Both non-motorized users and off-highway vehicle users may be on the same trail at the same time. **By being responsible and obeying regulations, you will be respecting the efforts that volunteers have invested in providing you with this opportunity.** Everyone has a stewardship role to play. If you see volunteers working on trail, stop and lend a helping hand. Remember, continued access to this area depends on the actions of those who use it.

Baldy Mountain is home to the Baldy Lookout Tower as well as the seasonal lookout observer who watches over the area for smoke indicative of wildfire. When exploring this fantastic observation point, **please keep in mind that the lookout tower is a place of work as well as a residence and the privacy of the observer must be respected.**

Note that some areas or sections of trail may be closed due to environmental and safety concerns. You are required to obey all posted signs and notices and keep the area in a clean and tidy condition. **Off-highway vehicles and snow vehicles must remain on the designated trails at all times which includes designated bridges and water crossings.**

All off-highway vehicles and snow vehicles on public land require:

- valid registration and insurance (including those under 50cc);
- licence plate must be visible and properly affixed to the OHV;
- tail lamp on vehicle capable of emitting a red light visible from at least 60 metres (185 feet);
- at least one white headlamp on vehicle front capable of illuminating a person, vehicle or thing from at least 60 metres (185 feet); and
- proper exhaust muffler with spark arrestor.

No matter how you enjoy Alberta's public lands, your presence has an impact. Please respect the land and other users by:

- Staying on the designated trail at all times.
- Respecting others by sharing the trail; motorized users must yield to non-motorized users.
- Pulling over to the right side of the trail, turning off the engine and removing helmets when horses are approaching.
- Packing out all garbage.
- Avoiding spinning your tires, skidding or "mud-bogging."
- Respecting wildlife.
- Respecting reforestation, reclamation, restoration and volunteer maintenance efforts.
- Washing your vehicle between uses to prevent weed transfer between areas.
- **Never washing a vehicle in a creek, river or lake.**
- Preventing fuel spillage with careful storage and refueling practices.
- Reporting unauthorized or illegal activities to local authorities.

Geocaching – There are multiple geocache sites located within the Bighorn Backcountry. Geocaching is an outdoor treasure hunting game using GPS-enabled devices. Participants navigate to a set of GPS coordinates and then attempt to locate a geocache container hidden at that location. To find various sites visit www.geocaching.com.

Emergency Contacts

9-1-1 in case of emergency

Cellular phone service may or may not be available in this area.

1-866-FYI-FIRE (1-866-394-3473) for Fire Ban information or visit www.albertafirebans.ca.

310-FIRE (310-3473) to report a wildfire. For daily fire hazard information, fire weather forecasts and fire situation reports visit www.esrd.alberta.ca/wildfire.

1-800-642-3800 for Report-A-Poacher hunting and fishing violations.

1-800-222-6514 for Alberta Environment

24 Hour Pollution Response Team

ISBN No. 978-1-4601-1573-2 (Printed Version)
978-1-4601-1574-9 (Online Version)

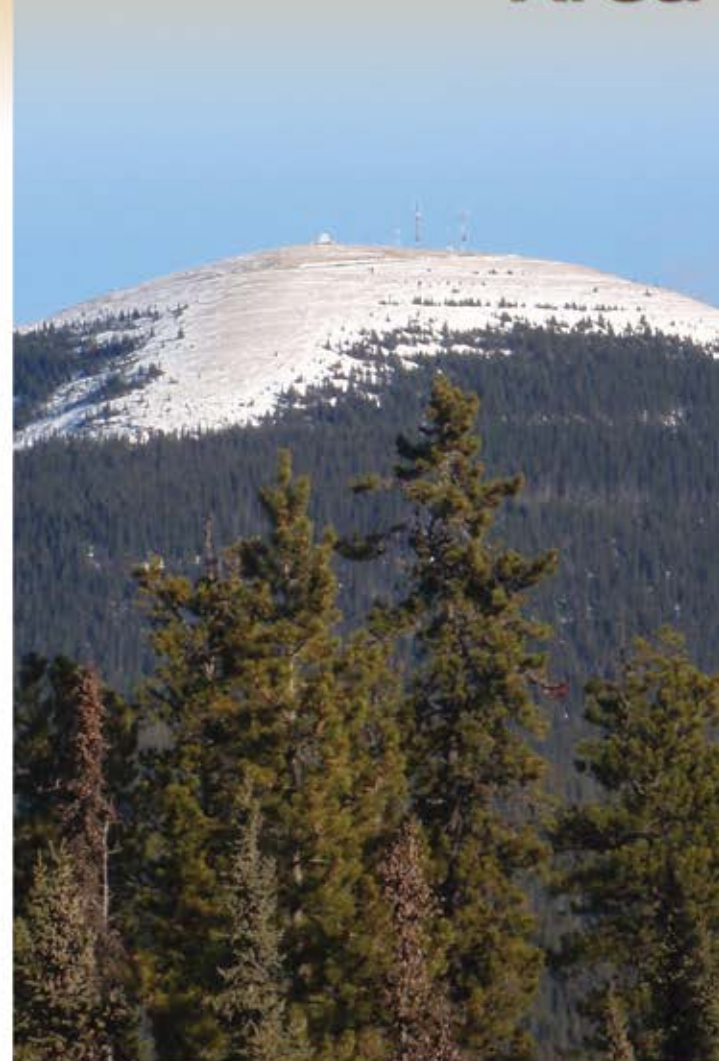
Revised March 2014



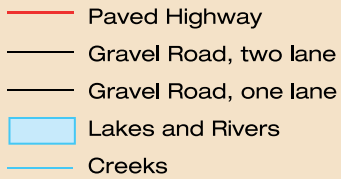
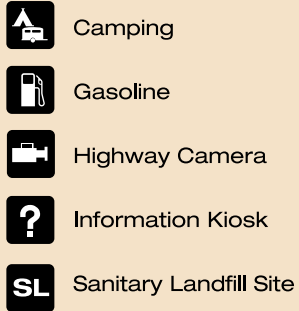
Alberta
Government

Bighorn Backcountry

Nordegg Area



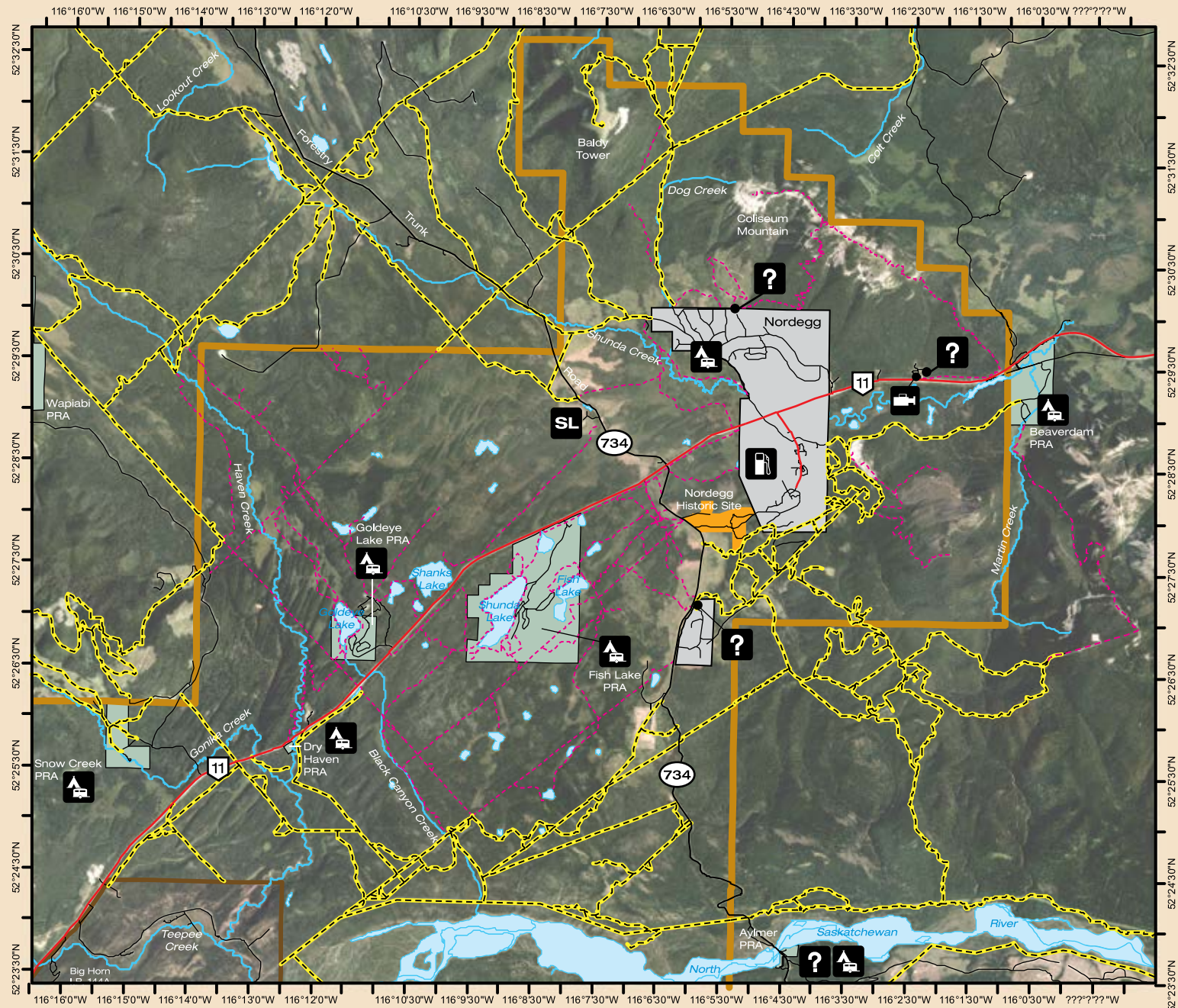
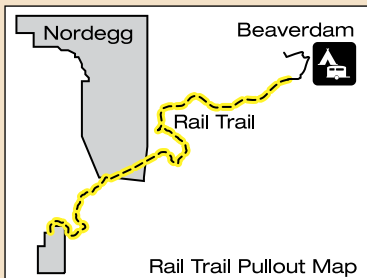
Legend



Trail access may be amended, modified or closed by an Officer in response to fires, fire hazard, flooding, wildlife or other environmental and safety concerns. Please ensure you have the most recent information on the area you are travelling to before you arrive and obey all posted signs and notices.

This map is intended to provide a general orientation to the Nordegg area. All trail locations are approximate and some trails may not appear on this map. The suggested map series for detailed topographic information is the National Topographic Series (NTS).

On-highway vehicle access is permitted on existing clearings/ trails up to 75 metres (246 feet) beyond Highway 11 and Highway 734 (Forestry Trunk Road) Right-of-Way unless otherwise posted.



Trail Classification

- Bighorn Backcountry Public Land Use Zones Boundary
- Major trails (**only** non-motorized use is permitted, unless otherwise posted).
- Trails that are open year-round for motorized off-highway vehicles, snow vehicles and non-motorized users, unless otherwise posted.

The Nordegg Area is near to the Bighorn Indian Reserve #144A. Please respect their lands by **NOT** trespassing.