

Rge 5 Rge 4 Rge 3 Rge 2 Rge 1 6th MER Rge 27 Rge 26 Rge 25 Rge 24 Rge 23 Rge 22 Rge 21 Rge 20 Rge 19 Rge 18 Rge 17

Twp 64
Twp 63
Twp 62
Twp 61
Twp 60
Twp 59
Twp 58
Twp 57
Twp 56
Twp 55

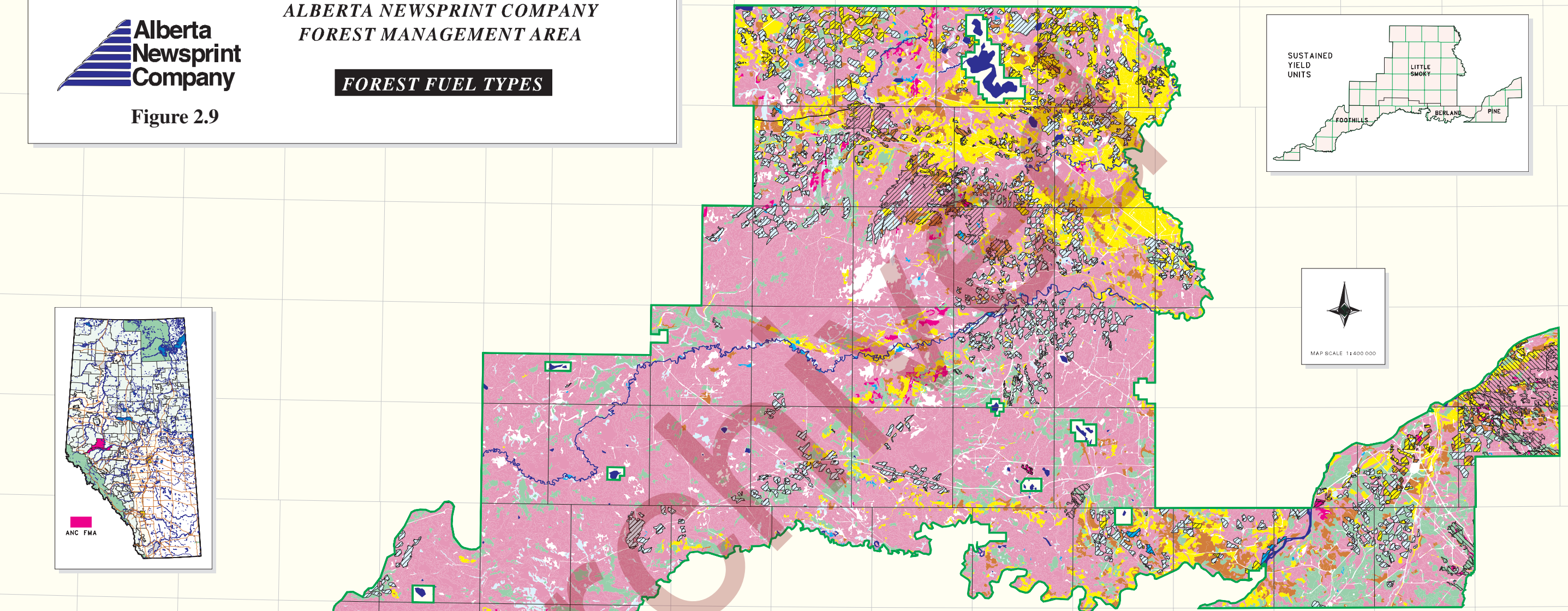
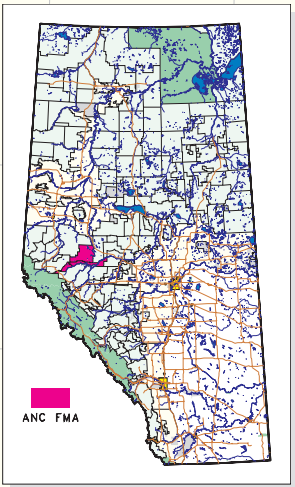
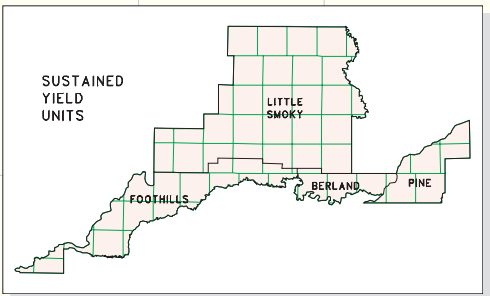
Twp 64
Twp 63
Twp 62
Twp 61
Twp 60
Twp 59
Twp 58
Twp 57
Twp 56
Twp 55
















**ALBERTA NEWSPRINT COMPANY
FOREST MANAGEMENT AREA**

FOREST FUEL TYPES

Figure 2.9



CANADIAN FOREST FIRE BEHAVIOUR (FBP) SYSTEM FUEL TYPES

 FUEL TYPE C-1 Spruce/Lichen Woodland	 FUEL TYPE D-1 Leafless Aspen	 WATERBODIES
 FUEL TYPE C-2 Boreal Spruce	 FUEL TYPE M-1 Boreal Mixedwood - leafless	 AVI CUTBLOCK MODIFIER (ANY EXTENT)
 FUEL TYPE C-3 Mature Jack or Lodgepole Pine	 FUEL TYPE S-1 Jack or Lodgepole Pine Slash	 AVI BURN MODIFIER (ANY EXTENT)
 FUEL TYPE C-4 Immature Jack or Lodgepole Pine	 FUEL TYPE O-1 Matted Grass	
 FUEL TYPE C-7 Ponderosa Pine/Douglas Fir	 NON-FUEL	

Fuel code assignments were developed from decision rules developed by the Forest Protection Division, Alberta Environmental Protection (AVI2FBP v2.0) and are intended to be approximately consistent with the Canadian Forest Fire Behavior Prediction System. (Reference: Development and Structure of the Canadian Forest Fire Behaviour Prediction System; Forestry Canada Fire Danger Group, Information Report ST-X-3).

NOTE: The most current AVI data was used to generate this map. Forest stand boundaries and attributes, landuse, etc. shown on this map may not accurately reflect current forest conditions.

Map Production: Silvacom Ltd
Map Date: June 9, 1999
Map Scale: 1:400000
Silvacom Ref.: C-049
Map File:
.../g-049/maps/report_maps/fuel_code/

