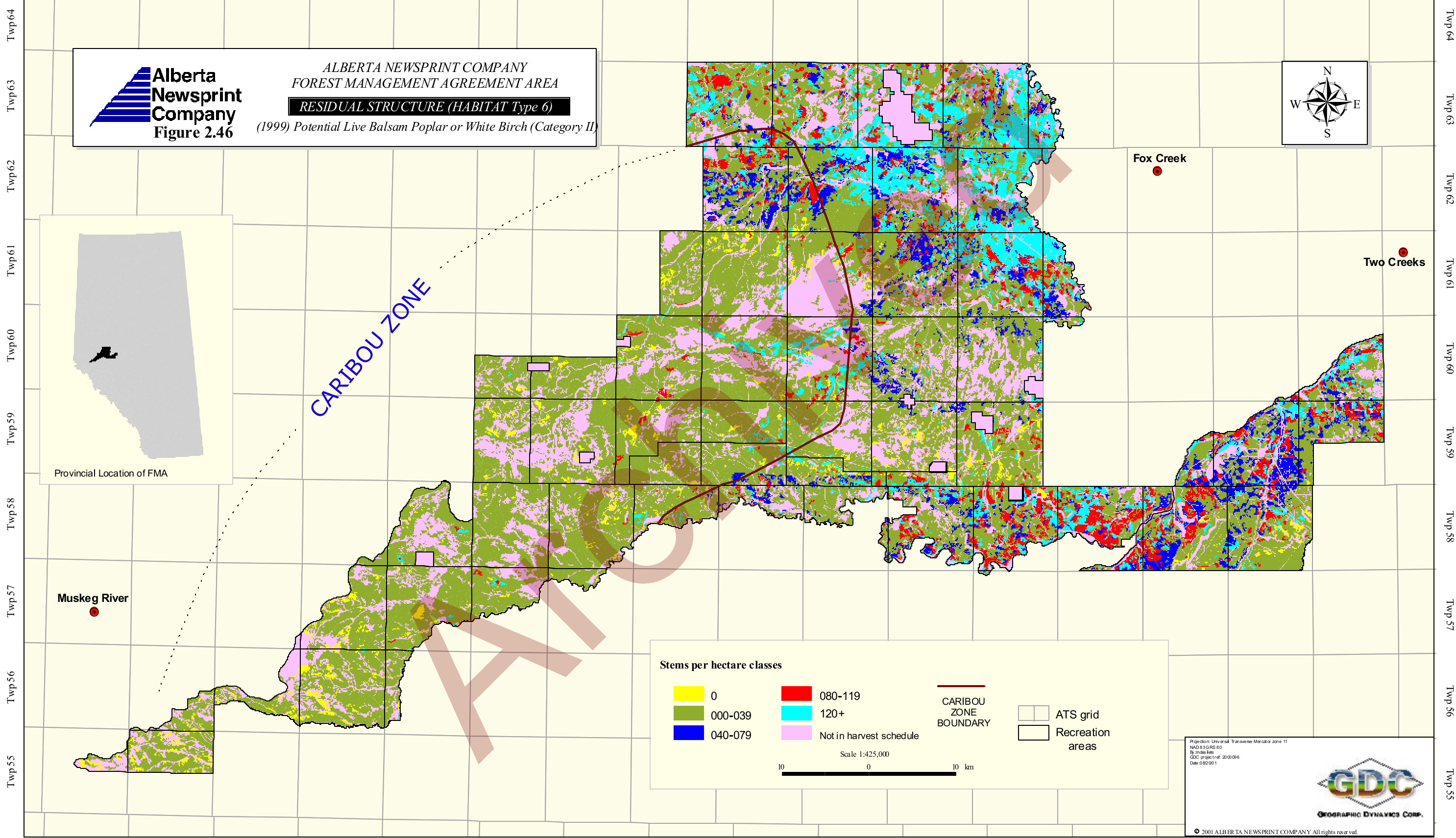
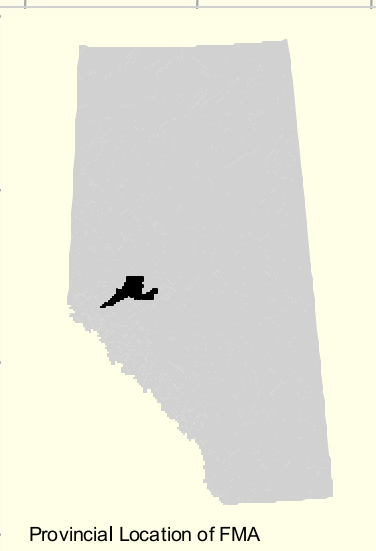
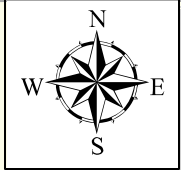


Rge 5 Rge 4 Rge 3 Rge 2 Rge 1 6th MER Rge 27 Rge 26 Rge 25 Rge 24 Rge 23 Rge 22 Rge 21 Rge 20 Rge 19 Rge 18 Rge 17



**Alberta Newsprint Company**  
**Figure 2.46**

ALBERTA NEWSPRINT COMPANY  
 FOREST MANAGEMENT AGREEMENT AREA  
**RESIDUAL STRUCTURE (HABITAT Type 6)**  
 (1999) Potential Live Balsam Poplar or White Birch (Category II)



CARIBOU ZONE

Fox Creek

Two Creeks

Muskeg River

**Stems per hectare classes**

0	080-119	CARIBOU ZONE BOUNDARY	ATS grid
000-039	120+	Recreation areas	
040-079	Not in harvest schedule		

Scale 1:425,000

10 0 10 km

Projection: Universal Transverse Mercator zone 11  
 NAD 83 GRS 80  
 30 metres file  
 GDC project ref: 200008  
 Date: 09/20/01



© 2001 ALBERTA NEWSPRINT COMPANY All rights reserved.

Rge 5 Rge 4 Rge 3 Rge 2 Rge 1 6th MER Rge 27 Rge 26 Rge 25 Rge 24 Rge 23 Rge 22 Rge 21 Rge 20 Rge 19 Rge 18 Rge 17

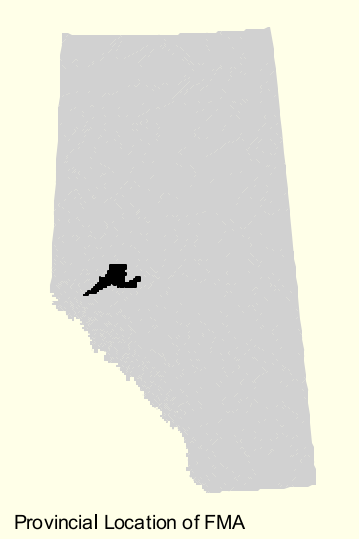
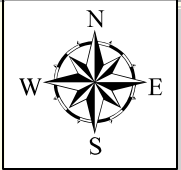
Twp 64  
Twp 63  
Twp 62  
Twp 61  
Twp 60  
Twp 59  
Twp 58  
Twp 57  
Twp 56  
Twp 55

Twp 64  
Twp 63  
Twp 62  
Twp 61  
Twp 60  
Twp 59  
Twp 58  
Twp 57  
Twp 56  
Twp 55

Rge 5 Rge 4 Rge 3 Rge 2 Rge 1 6th MER Rge 27 Rge 26 Rge 25 Rge 24 Rge 23 Rge 22 Rge 21 Rge 20 Rge 19 Rge 18 Rge 17



ALBERTA NEWSPRINT COMPANY  
FOREST MANAGEMENT AGREEMENT AREA  
**RESIDUAL STRUCTURE (HABITAT Type 6)**  
(1999) Potential for standing Dead Deciduous (Category IV)



Provincial Location of FMA

CARIBOU ZONE

Fox Creek

Two Creeks

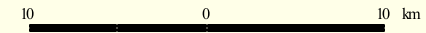
Muskeg River

Stems per hectare classes

- 0
- 000-039
- 040-079
- 080-119
- 120+
- Not in harvest schedule
- ATS grid
- Recreation areas

CARIBOU ZONE BOUNDARY

Scale 1:425,000



Projection: Universal Transverse Mercator zone 11  
NAD 83 GRS 80  
83 metre file  
GDC project ref: 2000098  
Date: 08/2001



© 2001 ALBERTA NEWSPRINT COMPANY All rights reserved.

Twp 64  
Twp 63  
Twp 62  
Twp 61  
Twp 60  
Twp 59  
Twp 58  
Twp 57  
Twp 56  
Twp 55

Twp 64  
Twp 63  
Twp 62  
Twp 61  
Twp 60  
Twp 59  
Twp 58  
Twp 57  
Twp 56  
Twp 55

Rge 5 Rge 4 Rge 3 Rge 2 Rge 1 6th MER Rge 27 Rge 26 Rge 25 Rge 24 Rge 23 Rge 22 Rge 21 Rge 20 Rge 19 Rge 18 Rge 17