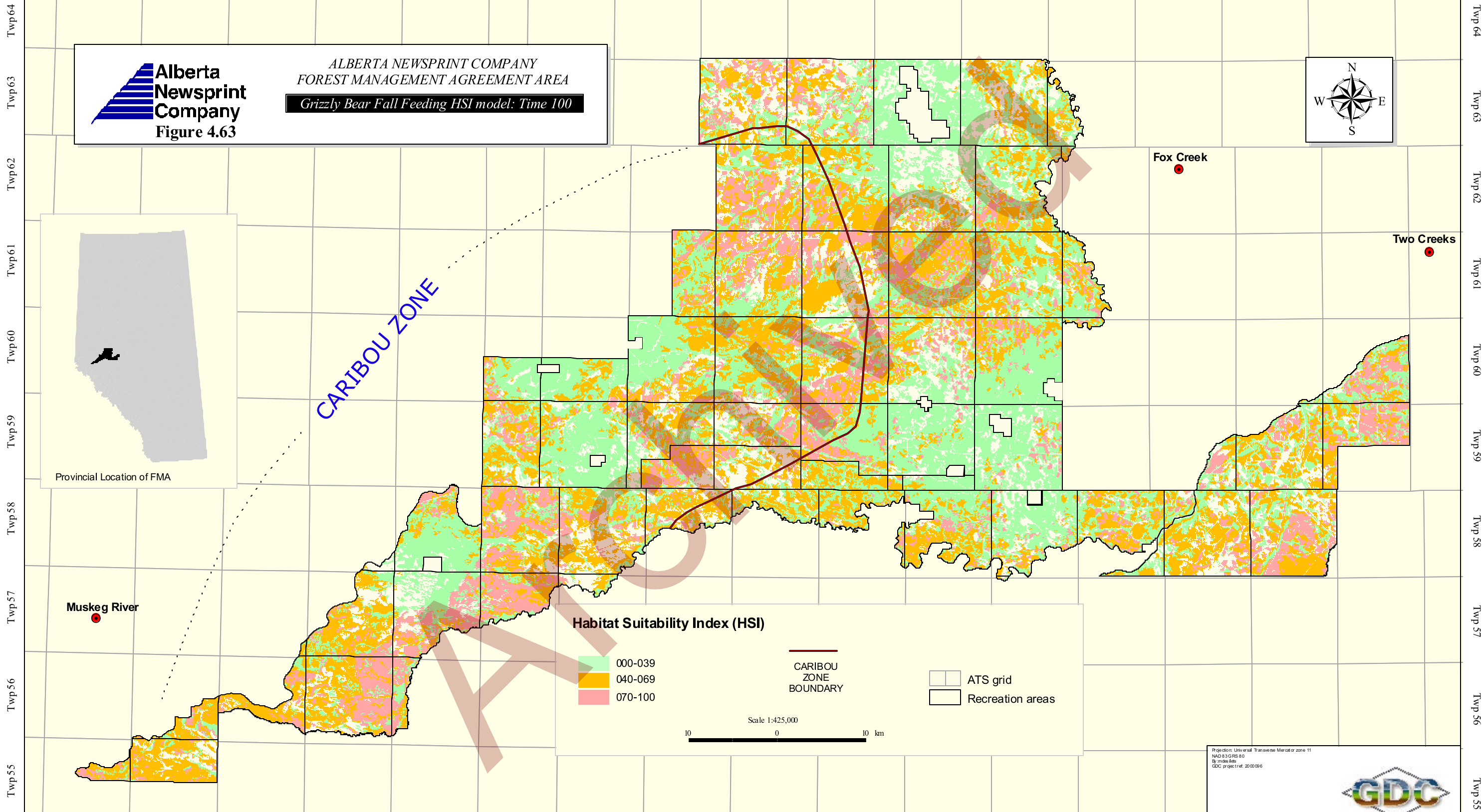
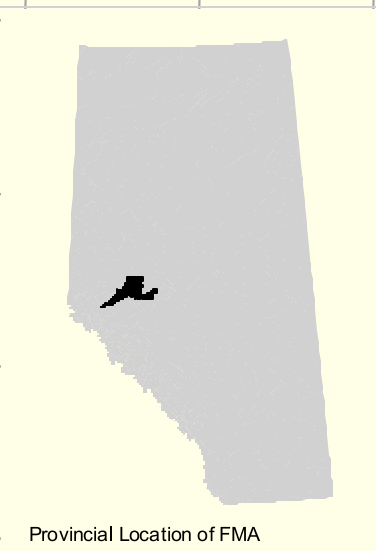


Rge 5 Rge 4 Rge 3 Rge 2 Rge 1 6th MER Rge 27 Rge 26 Rge 25 Rge 24 Rge 23 Rge 22 Rge 21 Rge 20 Rge 19 Rge 18 Rge 17



Alberta Newsprint Company
Figure 4.63

ALBERTA NEWSPRINT COMPANY
 FOREST MANAGEMENT AGREEMENT AREA
 Grizzly Bear Fall Feeding HSI model: Time 100



Provincial Location of FMA

CARIBOU ZONE

Fox Creek

Two Creeks

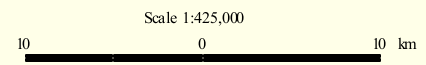
Muskeg River

Habitat Suitability Index (HSI)

- 000-039
- 040-069
- 070-100

CARIBOU ZONE BOUNDARY

- ATS grid
- Recreation areas



Projection: Universal Transverse Mercator zone 11
 NAD 83 GRS 80
 30 m x 30 m cells
 GDC project ref: 2000086



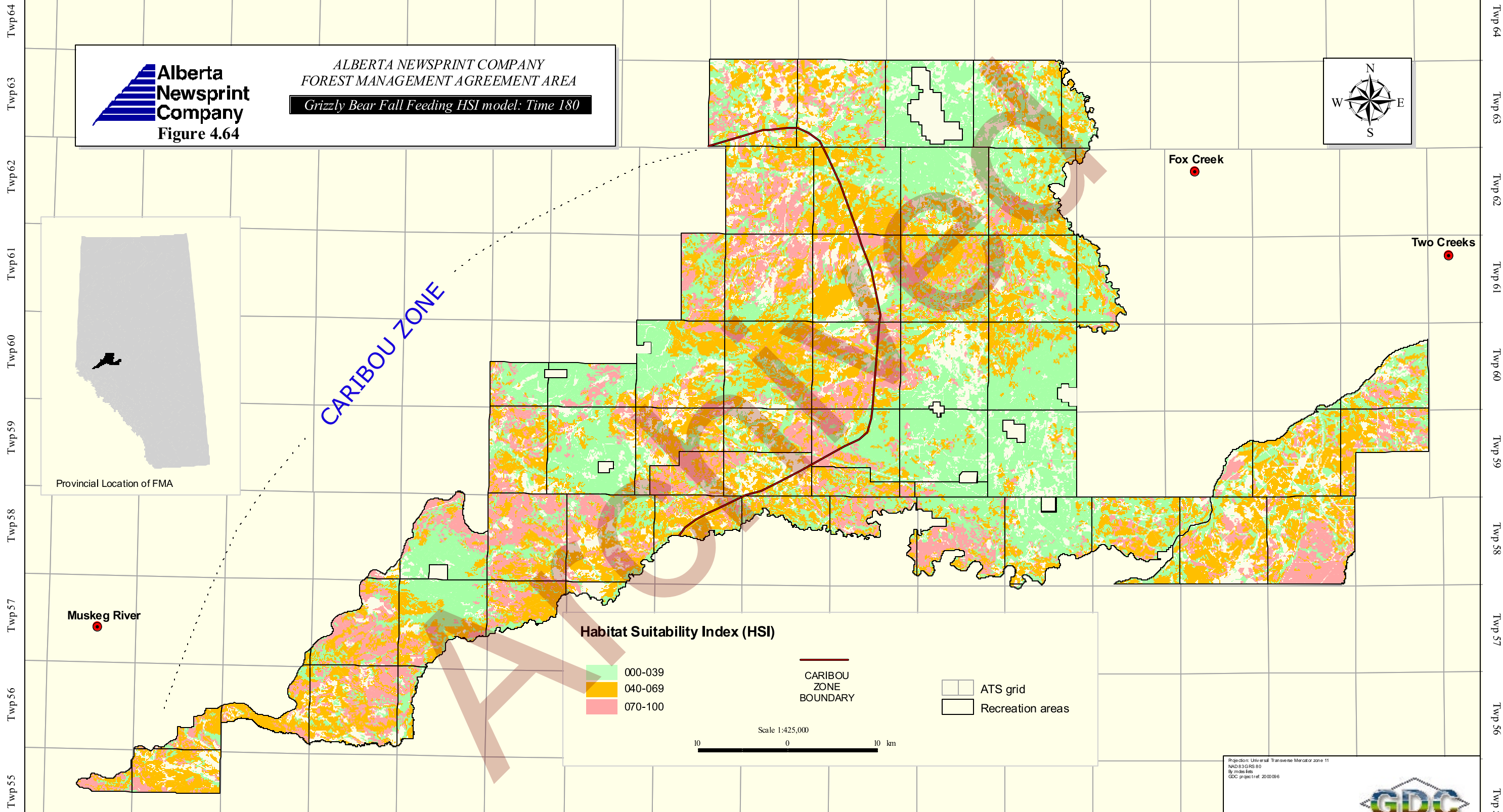
© 2001 ALBERTA NEWSPRINT COMPANY All rights reserved.

Rge 5 Rge 4 Rge 3 Rge 2 Rge 1 6th MER Rge 27 Rge 26 Rge 25 Rge 24 Rge 23 Rge 22 Rge 21 Rge 20 Rge 19 Rge 18 Rge 17

Twp 64
Twp 63
Twp 62
Twp 61
Twp 60
Twp 59
Twp 58
Twp 57
Twp 56
Twp 55

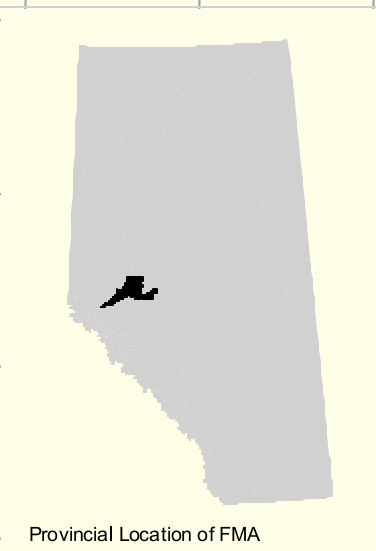
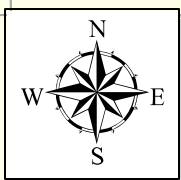
Twp 64
Twp 63
Twp 62
Twp 61
Twp 60
Twp 59
Twp 58
Twp 57
Twp 56
Twp 55

Rge 5 Rge 4 Rge 3 Rge 2 Rge 1 6th MER Rge 27 Rge 26 Rge 25 Rge 24 Rge 23 Rge 22 Rge 21 Rge 20 Rge 19 Rge 18 Rge 17



Alberta Newsprint Company
Figure 4.64

ALBERTA NEWSPRINT COMPANY
 FOREST MANAGEMENT AGREEMENT AREA
 Grizzly Bear Fall Feeding HSI model: Time 180



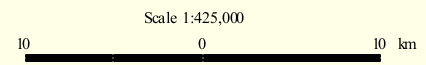
CARIBOU ZONE

Habitat Suitability Index (HSI)

- 000-039
- 040-069
- 070-100

CARIBOU ZONE BOUNDARY

- ATS grid
- Recreation areas



Projection: Universal Transverse Mercator zone 11
 NAD 83 GRS 80
 3° cross-tie
 GDC project ref: 200008



© 2001 ALBERTA NEWSPRINT COMPANY All rights reserved.

Rge 5 Rge 4 Rge 3 Rge 2 Rge 1 6th MER Rge 27 Rge 26 Rge 25 Rge 24 Rge 23 Rge 22 Rge 21 Rge 20 Rge 19 Rge 18 Rge 17

Twp 64
Twp 63
Twp 62
Twp 61
Twp 60
Twp 59
Twp 58
Twp 57
Twp 56
Twp 55

Twp 64
Twp 63
Twp 62
Twp 61
Twp 60
Twp 59
Twp 58
Twp 57
Twp 56
Twp 55