

APPENDIX G
2007 Borehole Logs

Monitoring Well No.: 07MW02

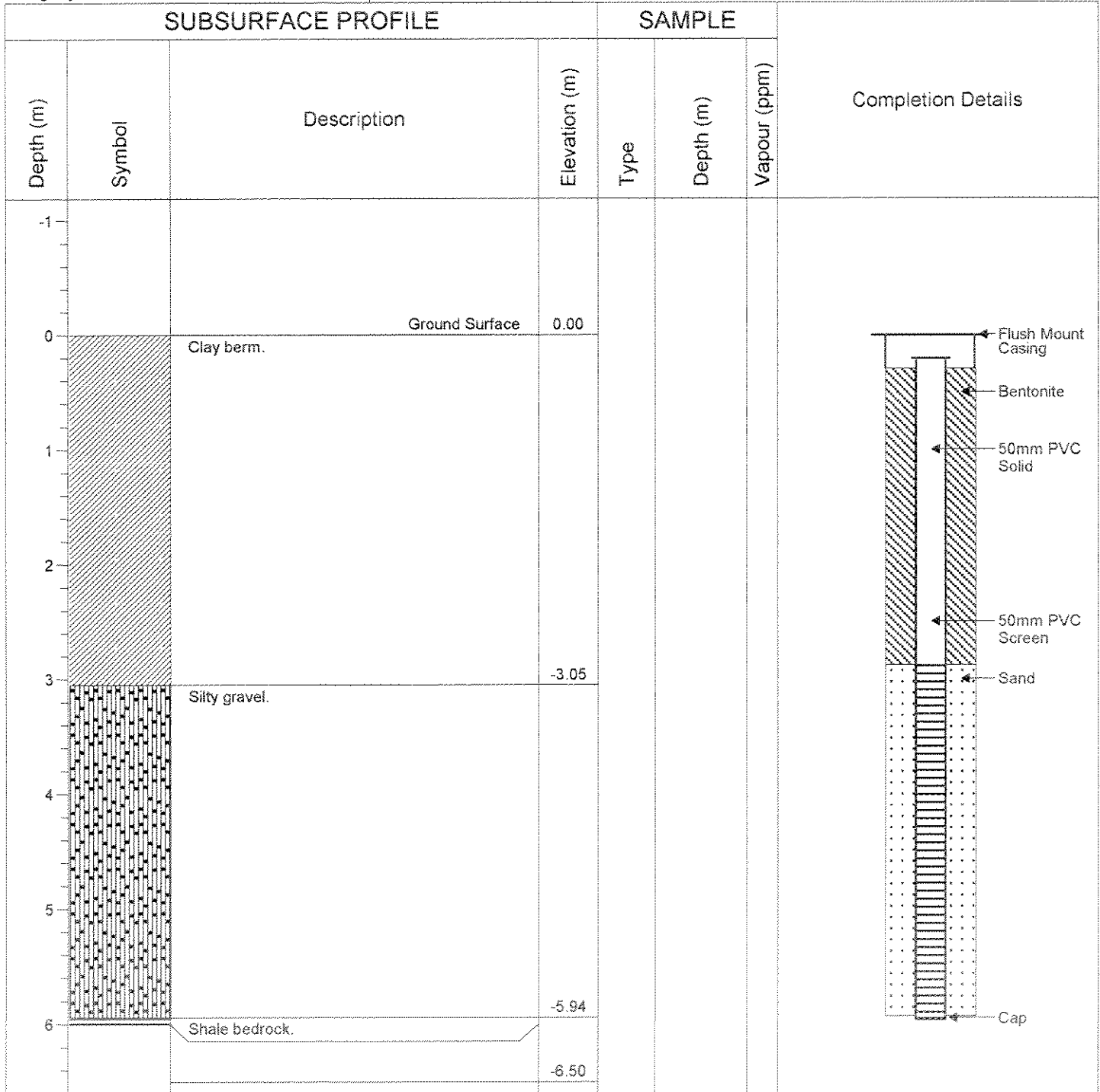
Project No.: 110860038

Project: Turner Valley Gas Plant Containment Wall

Client: Alberta Infrastructure and Transportation

Location: Turner Valley, Alberta

Stantec Consulting
200 - 325 - 25 Street SE
Calgary, Alberta T2A 7H8



Field Personnel: Mike McCrank

Drilling Method: Becker Hammer

Drill Date: Feb 12th, 2007

Contractor: Beck Drilling

Ground Elevation (m): N/A

Casing Elevation (m): 1198.525

Monitoring Well No.: 07MW03

Project No.: 110860038

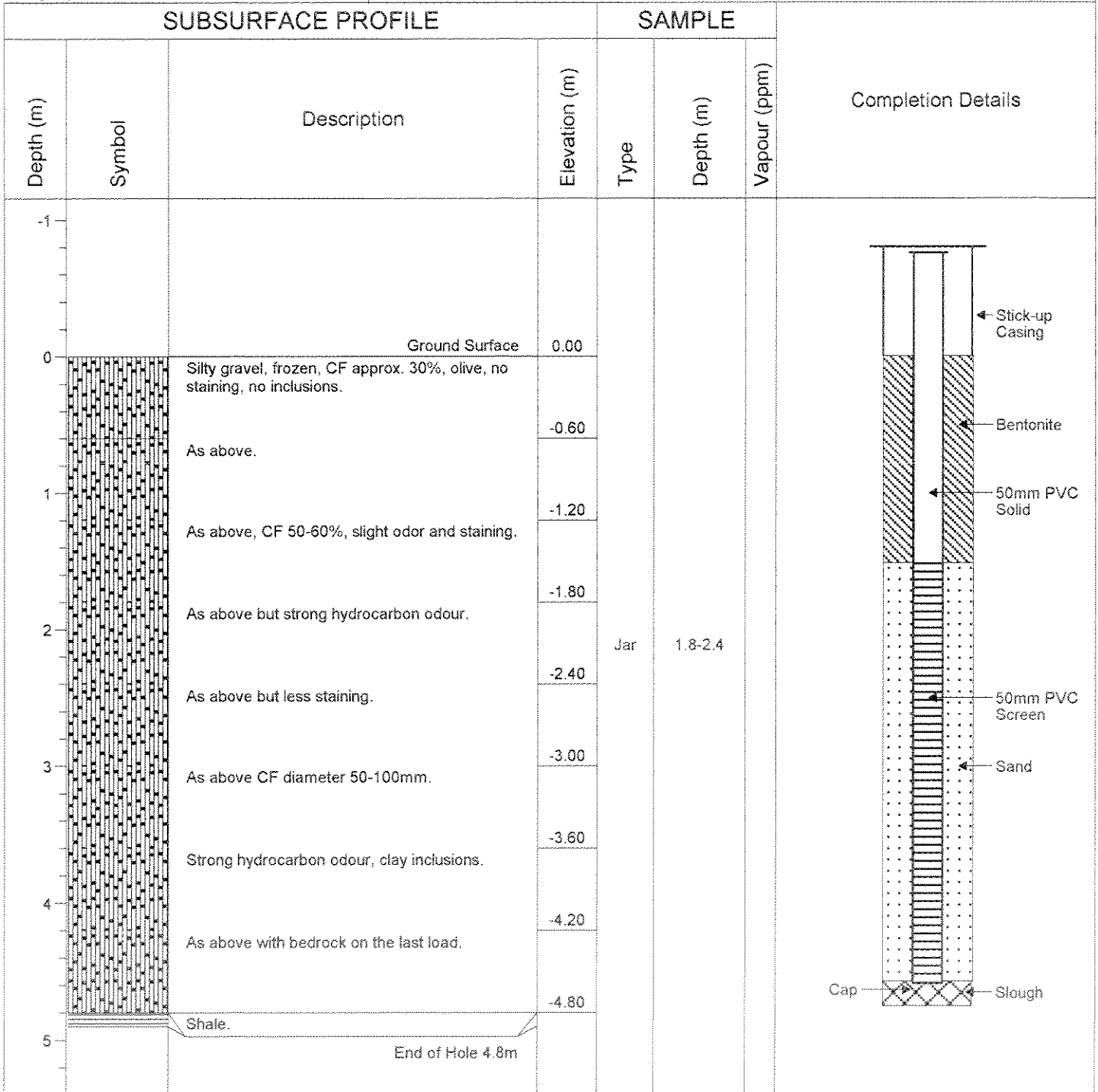
Project: Turner Valley Gas Plant Containment Wall

Client: Alberta Infrastructure and Transportation

Location: Turner Valley, Alberta

Stantec Consulting

200 - 325 - 25 Street SE
Calgary, Alberta T2A 7H8



Field Personnel: Adina LaPerle

Drilling Method: Becker Hammer

Drill Date: Feb 10th, 2007

Contractor: Beck Drilling

Ground Elevation (m): N/A

Casing Elevation (m): 1197.05

Monitoring Well No.: 07MW04

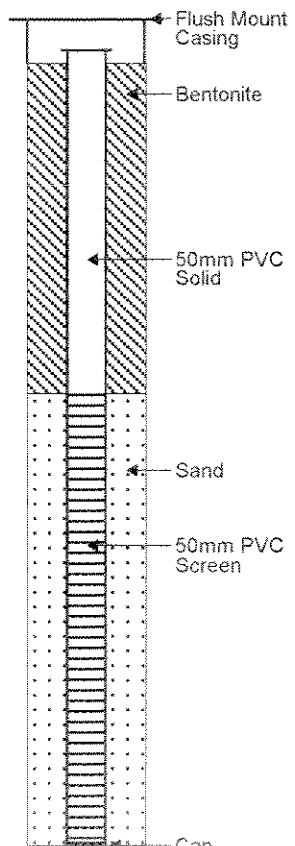
Project No.: 110860038

Project: Turner Valley Gas Plant Containment Wall

Client: Alberta Infrastructure and Transportation

Location: Turner Valley, Alberta

Stantec Consulting
200 - 325 - 25 Street SE
Calgary, Alberta T2A 7H8

SUBSURFACE PROFILE				SAMPLE			Completion Details
Depth (m)	Symbol	Description	Elevation (m)	Type	Depth (m)	Vapour (ppm)	
-1							
0		Ground Surface	0.00				
1		Clay.					
2		Silty gravel.	-1.83				
3							
4							
5			-5.47				
6		Shale bedrock.	-5.79				
		End of Hole 5.79m					

Field Personnel: Mike McCrank

Drilling Method: Becker Hammer

Drill Date: Feb 12th, 2007

Contractor: Beck Drilling

Ground Elevation (m): N/A

Casing Elevation (m): 1197.392

Monitoring Well No.: 07MW05

Project No.: 110860038

Project: Turner Valley Gas Plant Containment Wall

Client: Alberta Infrastructure and Transportation

Location: Turner Valley, Alberta

Stantec Consulting
200 - 325 - 25 Street SE
Calgary, Alberta T2A 7H8

SUBSURFACE PROFILE				SAMPLE			Completion Details
Depth (m)	Symbol	Description	Elevation (m)	Type	Depth (m)	Vapour (ppm)	
-1		Ground Surface	0.00				
0	[Symbol]	Silty gravel, frozen, CF approx. 30%, olive, no staining, no inclusions.					
0.60		As above with some slight hydrocarbon odour.	-0.60				
1.20		As above, CF 50-60%, slight odor and staining.	-1.20				
1.80		As above but stronger hydrocarbon odour.	-1.80				
2.40		As above with less hydrocarbon odour.	-2.40	Jar	1.8-2.4		
3.00		As above with some bedrock.	-3.00				
4.57		End of Hole 4.57m	-4.57				
5							

Field Personnel: Adina LaPerle

Drilling Method: Becker Hammer

Drill Date: Feb 10th, 2007

Contractor: Beck Drilling

Ground Elevation (m): N/A

Casing Elevation (m): 1195.418

Monitoring Well No.: 07MW06

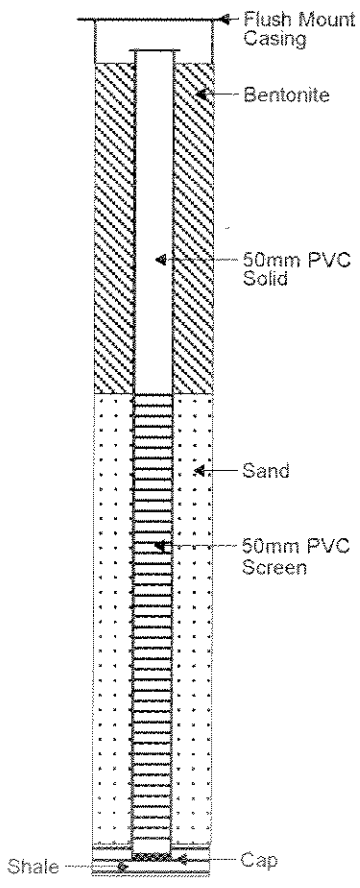
Project No.: 110860038

Project: Turner Valley Gas Plant Containment Wall

Client: Alberta Infrastructure and Transportation

Location: Turner Valley, Alberta

Stantec Consulting
200 - 325 - 25 Street SE
Calgary, Alberta T2A 7H8

SUBSURFACE PROFILE				SAMPLE			Completion Details
Depth (m)	Symbol	Description	Elevation (m)	Type	Depth (m)	Vapour (ppm)	
-1							
0		Ground Surface	0.00				
1		Clay.					
2							
3		Silty gravel.	-2.44				
4							
5			-5.49	Jar	4.9-5.5		
6		Shale Bedrock.	-5.79				
		End of Hole 5.79m					

Field Personnel: Mike McCrank

Drilling Method: Becker Hammer

Drill Date: Feb 12th, 2007

Contractor: Beck Drilling

Ground Elevation (m): N/A

Casing Elevation (m): 1195.418

Monitoring Well No.: 07MW07

Project No.: 110860038

Project: Turner Valley Gas Plant Containment Wall

Client: Alberta Infrastructure and Transportation

Location: Turner Valley, Alberta

Stantec Consulting

200 - 325 - 25 Street SE
Calgary, Alberta T2A 7H8

SUBSURFACE PROFILE				SAMPLE			Completion Details
Depth (m)	Symbol	Description	Elevation (m)	Type	Depth (m)	Vapour (ppm)	
-1							
0		Ground Surface	0.00				
	[Symbol]	Silty gravel, frozen, CF approx. 30%, olive..					
			-0.60				
	[Symbol]	Silty gravel, CF approx 50-60 %, olive.					
1			-1.20				
	[Symbol]	As above, CF 50-60%, slight odor and staining.					
			-1.80				
2							
	[Symbol]	As above but stronger hydrocarbon odour.					
3			-3.00				
	[Symbol]	Shale bedrock.					
			-3.65				
		End of Hole 3.65m					
4							
5							

Field Personnel: Adina LaPerle

Drilling Method: Becker Hammer

Drill Date: Feb 10th, 2007

Contractor: Beck Drilling

Ground Elevation (m): N/A

Casing Elevation (m): 1194.456

Monitoring Well No.: 07MW08

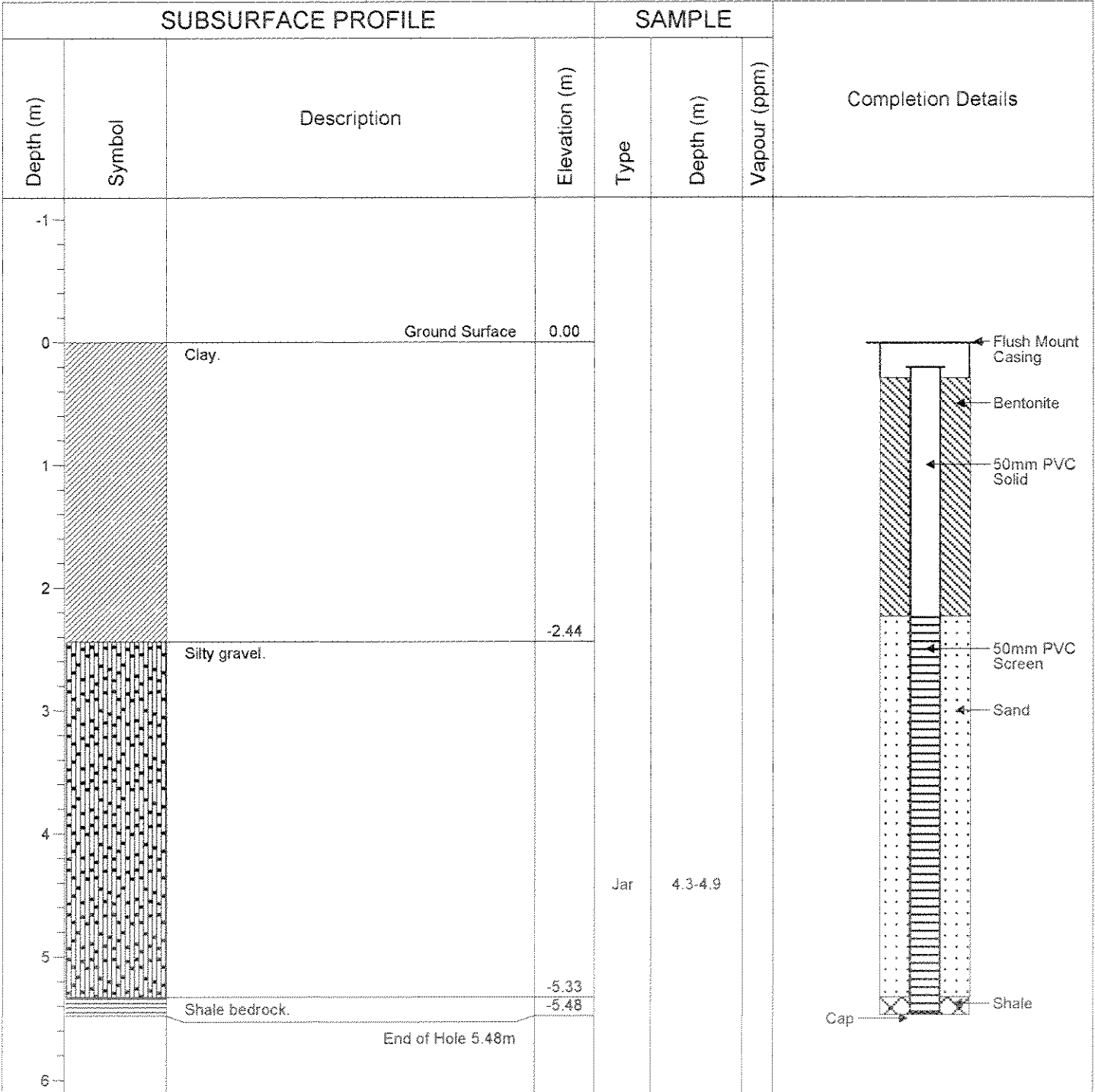
Project No.: 110860038

Project: Turner Valley Gas Plant Containment Wall

Client: Alberta Infrastructure and Transportation

Location: Turner Valley, Alberta

Stantec Consulting
200 - 325 - 25 Street SE
Calgary, Alberta T2A 7H8



Field Personnel: Mike McCrank

Drilling Method: Becker Hammer

Drill Date: Feb 12th, 2007

Contractor: Beck Drilling

Ground Elevation (m): 0

Casing Elevation (m): 1198.112

Monitoring Well No.: 07MW09

Project No.: 110860038

Project: Turner Valley Gas Plant Containment Wall

Client: Alberta Infrastructure and Transportation

Location: Turner Valley, Alberta

Stantec Consulting
200 - 325 - 25 Street SE
Calgary, Alberta T2A 7H8

SUBSURFACE PROFILE				SAMPLE			Completion Details
Depth (m)	Symbol	Description	Elevation (m)	Type	Depth (m)	Vapour (ppm)	
-1							<p style="font-size: small;"> ← Flush mount Casing ← Bentonite ← 50mm PVC Solid ← Sand ← 50mm PVC Screen ← Cap </p>
0		Ground Surface	0.00				
1		Lithology not availible.					
2							
3							
4							
5				Jar	4.9-5.5		
6							
7		End of Hole 6.42m	-6.42				
8							

Field Personnel: Mike McCrank

Drilling Method: Becker Hammer

Drill Date: Feb 12th, 2007

Contractor: Beck Drilling

Ground Elevation (m): N/A

Casing Elevation (m): 1194.232

Monitoring Well No.: 07MW10

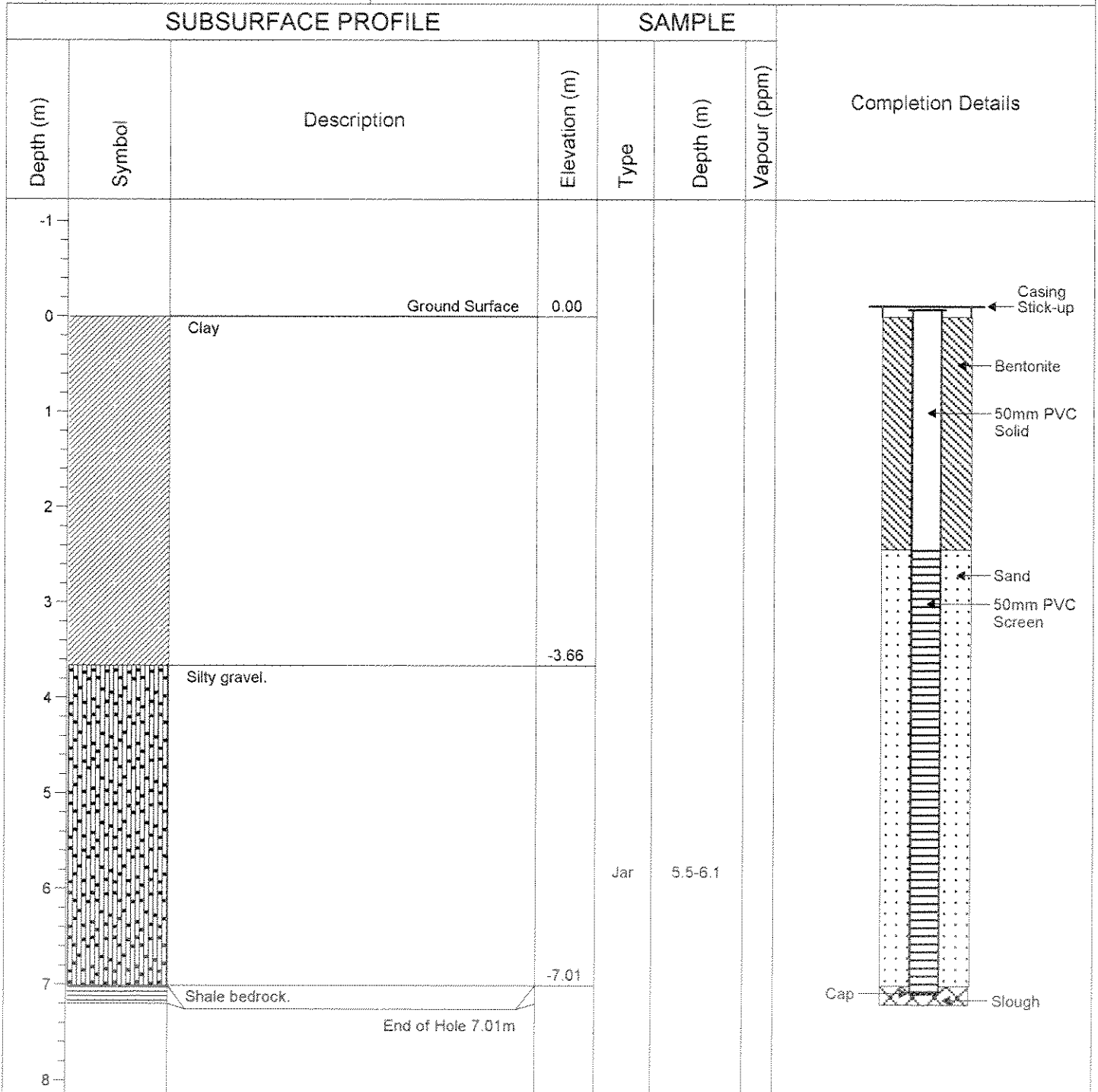
Project No.: 110860038

Project: Turner Valley Gas Plant Containment Wall

Client: Alberta Infrastructure and Transportation

Location: Turner Valley, Alberta

Stantec Consulting
200 - 325 - 25 Street SE
Calgary, Alberta T2A 7H8



Field Personnel: Mike McCrank

Drilling Method: Becker Hammer

Drill Date: Feb 12th, 2007

Contractor: Beck Drilling

Ground Elevation (m): N/A

Casing Elevation (m): 1194.282