

**WORKER FALLS FROM HORSE**

**Type of Incident: Fatality**

**Date of Incident: August 23, 2011**

## TABLE OF CONTENTS

SECTION	TITLE	PAGE NUMBER
1.0	DATE AND TIME OF INCIDENT	3
2.0	NAME & ADDRESS OF PRINCIPAL PARTIES	3
2.1	Owner	3
2.2	Prime Contractor	3
2.3	Employer(s)	3
2.4	Contractor(s)	3
2.5	Supplier(s)	3
2.6	Workers(s)	3
2.7	Others	3
3.0	DESCRIPTION OF PRINCIPAL PARTIES	4
3.1	Employers	4
3.2	Persons with Developmental Disabilities	4
3.3	Worker	4
3.4	Property Owner/Land Lord	4
4.0	LOCATION OF INCIDENT	5
5.0	EQUIPMENT, MATERIAL AND OBSERVATIONS	5
5.1	Equipment and Material	5
5.2	Observations	5
6.0	NARRATIVE DESCRIPTION OF INCIDENT	5
7.0	ANALYSIS	7
7.1	Direct Cause	7
7.2	Contributing Factors	7
8.0	FOLLOW-UP/ ACTION TAKEN	8
8.1	Human Services, Occupational Health and Safety	8
8.2	Industry	8
8.3	Additional Measures	8
9.0	SIGNATURES	9
10.0	ATTACHMENTS	

**SECTION 1.0 DATE AND TIME OF INCIDENT**

1.1 August 23, 2011 at approximately 3:30 p.m.

**SECTION 2.0 NAME AND ADDRESS OF PRINCIPAL PARTIES**

**2.1 Owner(s)**

2.1.1 Not Applicable.

**2.2 Prime Contractor**

2.2.1 712556 Alberta Inc.  
Operating as Providing Residential Options and Services (P.R.O.S.)  
P.O. Box 525  
Elnora, AB, T0M 0Y0

**2.3 Employer(s)**

2.3.1 712556 Alberta Inc.  
Operating as Providing Residential Options and Services (P.R.O.S.)  
P.O. Box 525  
Elnora, AB, T0M 0Y0

**2.4 Contractor(s)**

2.4.1 Not Applicable

**2.5 Supplier(s)**

2.5.1 Not Applicable

**2.6 Worker(s)**

2.6.1 (\*\*\*\*\*)

**2.7 Others**

2.7.1 Persons with Developmental Disabilities (PDD)  
Central Region Community Board  
#501, 5010-43 Street  
Red Deer, AB, T4N 6H2

2.7.2 (\*\*\*\*\*), Property Owner  
34343 Range Road 13, Bowden, AB  
P.O. Box 868  
Bowden, AB, T0M 0K0

(Names and personal details were removed before distribution of this report)

### **SECTION 3.0 DESCRIPTION OF PRINCIPAL PARTIES**

- 3.1 Government of Alberta Minister of Human Services is responsible for the Persons with Developmental Disabilities (PDD) program, administered under the authority of the Persons with Developmental Disabilities Community Governance Act.

The PDD program is administered and governed by six community Boards and provides funding and support for adult Albertan's with developmental disabilities.

Program funding is assessed on individual need and is provided to support persons with developmental disabilities to live independently in their home and social environments, through financial supplements to the individuals, supporting family, friends and community members.

- 3.2 712556 Alberta Inc., operating as Providing Residential Options and Services (P.R.O.S.), is an approved regional service provider under the PDD program.

PDD provides funding to P.R.O.S. under a Service Provider Agreement to provide residential care for 24 individuals, in four (4) residential care facilities.

At the time of the August 23, 2011 incident, P.R.O.S. employed 60-70 employees at residential care facilities in Bowden, Castor, and Innisfail. Ten (10) full time employees provided continuous care to three (3) developmentally disabled adults at the P.R.O.S. Bowden facility.

- 3.3 Worker 1 (\*\*\*\*\*) was employed with P.R.O.S. as a Program Supervisor, having commenced employment January 28, 2008. Worker 1 (\*\*\*\*\*) was assigned to the P.R.O.S. 5151-36<sup>th</sup> Street, Innisfail residential care facility.

- 3.4 The owner (\*\*\*\*\*) of the 34343 Range Road 13, Bowden, AB property was landlord to three (3) clients residing in the P.R.O.S. Bowden residential care facility, under rental agreements. He also owns the adjacent fenced pasture and paddock area where P.R.O.S. employee Worker 1 (\*\*\*\*\*) was riding a horse at the time of the August 23, 2011 incident.

**SECTION 4.0 LOCATION OF INCIDENT**

- 4.1 34343 Range Road 13, Bowden, AB. (Refer to Attachment A - Map and Attachment B - Photographs).

**SECTION 5.0 EQUIPMENT, MATERIAL AND OBSERVATIONS**

**5.1 Equipment and Material**

- 5.1.1 One (1) Bay Mare, 11 Years Old

**5.2 Observations**

- 5.2.1 On August 23, 2011, weather conditions were seasonal with daily low and high temperatures of 11.3<sup>0</sup> C and 22.0<sup>0</sup> C respectively. No precipitation was recorded on this day.
- 5.2.2 The grass covered paddock area near the barn where the three horses were stabled was of relatively uniform grade and included a narrow worn pathway from the adjacent pasture to the barn entrance door.
- 5.2.3 There were no direct witnesses to the incident in which Worker 1 (\*\*\*\*\*) sustained fatal injuries, as a result of falling from or being thrown from her horse.

**SECTION 6.0 NARRATIVE DESCRIPTION OF THE INCIDENT**

- 6.1 On August 18, 2011, Worker 1 (\*\*\*\*\*) purchased an 11 year old bay mare at the Innisfail Auction Market.
- 6.2 On August 18, 2011, Worker 1 (\*\*\*\*\*) transported the horse to a fenced pasture adjacent to the P.R.O.S. residential care facility at 34343 Range Road 13, Bowden, AB, where she also stabled two other horses she owned.
- 6.3 On August 23, 2011, Worker 1 (\*\*\*\*\*) was scheduled to work at the P.R.O.S. 5151-36<sup>th</sup> Street, Innisfail, AB residential care facility, from 7 a.m. through 5 p.m.

- 6.4 On August 23, 2011, at approximately 10:00 a.m., Worker 1 (\*\*\*\*\*) had a discussion with her supervisor (\*\*\*\*\*) at the P.R.O.S. Innisfail facility, regarding the positive benefits that an animal therapy program would have on the developmentally disabled residents at the P.R.O.S. Bowden residential care facility.
- 6.5 On August 23, 2011, supervisor (\*\*\*\*\*) authorized Worker 1 (\*\*\*\*\*) to leave her assigned P.R.O.S. Innisfail work place, and to travel to the P.R.O.S. Bowden facility, to break in a new horse, in anticipation of commencing an animal therapy program at the P.R.O.S. Bowden facility.
- 6.6 On August 23, 2011 at approximately 2:00 p.m., Worker 1 (\*\*\*\*\*) arrived at the P.R.O.S. Bowden facility with her daughter and her daughter's friend, with the purpose of breaking in the new horse.
- 6.7 Worker 1 (\*\*\*\*\*) and the two children accessed the barn situated in the fenced paddock area south of the P.R.O.S. Bowden residential care facility, and saddled each of three horses.
- 6.8 Worker 1 (\*\*\*\*\*) and the two children commenced riding the horses in the fenced pasture situated east of the P.R.O.S. Bowden residential care facility.
- 6.9 At approximately 3:30 p.m. on August 23, 2011, Worker 1 (\*\*\*\*\*) and the two children returned from their ride and entered the fenced paddock area south of the P.R.O.S. Bowden residential care facility.
- 6.10 At approximately 3:30 p.m. on August 23, 2011, Worker 2 (\*\*\*\*\*) and Worker 3 (\*\*\*\*\*) were in the driveway area of the P.R.O.S. Bowden residential care facility. They heard horses galloping towards the adjacent fenced paddock area, and subsequently heard shouting followed by what they described as a sound of someone being thrown from a horse.
- 6.11 At approximately 3:30 p.m. on August 23, 2011, Worker 2 (\*\*\*\*\*) entered the fenced paddock area and observed Worker 1 (\*\*\*\*\*) laying on her stomach on the ground and apparently unconscious.
- 6.12 Worker 2 (\*\*\*\*\*) unsuccessfully attempted to awaken Worker 1 (\*\*\*\*\*). She tested for and was unable to locate a pulse.
- 6.13 At approximately 3:35 p.m., Worker 2 (\*\*\*\*\*) left the paddock area and contacted 911.

- 6.14 While communicating with 911, Worker 2 (\*\*\*\*\*) directed Worker 3 (\*\*\*\*\*) to go to the paddock area to attend to Worker 1 (\*\*\*\*\*)
- 6.15 After communicating with 911, Worker 2 (\*\*\*\*\*) returned to the paddock area, and with assistance from Worker 3 (\*\*\*\*\*), re-positioned Worker 1 (\*\*\*\*\*) onto her back, and commenced artificial respiration and cardiopulmonary resuscitation.
- 6.16 At 3:47 p.m. EMS and Fire Services crews attended the incident scene and confirmed Worker 1 (\*\*\*\*\*) had no vital signs.
- 6.17 At 3:57 p.m., Worker 1 (\*\*\*\*\*) was transported by ambulance to Innisfail Hospital.
- 6.18 At 4:50 p.m. on August 23, 2011 Worker 1 (\*\*\*\*\*) was pronounced deceased.

## **SECTION 7.0 ANALYSIS**

### **7.1 Direct Cause**

- 7.1.1 Worker 1 (\*\*\*\*\*) sustained fatal neck injuries attributed to falling from or being thrown from a horse.

### **7.2 Contributing Factors**

- 7.2.1 Worker 1 (\*\*\*\*\*) was not wearing any riding gear or personal protective equipment when the incident occurred.
- 7.2.2 P.R.O.S. did not ensure that a hazard assessment was conducted when a new work process was introduced requiring Worker 1 (\*\*\*\*\*) to be exposed to hazards associated with riding a horse during regular working hours.
- 7.2.3 Worker 1 (\*\*\*\*\*) had not ridden the new horse prior to the August 23, 2011 incident. She was considered to be an experienced rider.
- 7.2.4 The horse involved in the August 23, 2011 accident was purchased by Worker 1 (\*\*\*\*\*) on August 18, 2011. The horse had five (5) days to become accustomed to its surroundings and the two (2) other horses who occupied the barn, paddock and fenced pasture, prior to August 18, 2011.

**SECTION 8.0 FOLLOW-UP/ ACTION TAKEN**

**8.1 Human Services, Occupational Health and Safety**

- 8.1.1 At 11:28 a.m. on August 24, 2011, the Occupational Health and Safety Contact Centre received notification from employer P.R.O.S that an employee had been thrown from a horse on August 23, 2011, and had sustained fatal injuries. It was confirmed that the incident scene had not been secured by the employer.
- 8.1.2 On August 25, 2011, OHS attended the incident scene at the P.R.O.S 34343 Range Road 13, Bowden, AB residential care facility and commenced an investigation.
- 8.1.3 On August 25, 2011, OHS issued a Notice to Produce requiring P.R.O.S to conduct an investigation into the August 23, 2011 workplace fatality, and to provide OHS with a copy of its report.
- 8.1.4 On August 25, 2011, OHS issued a Notice to Produce requiring P.R.O.S to provide the following documentation.
1. A copy of the current lease agreement between P.R.O.S and property owner (\*\*\*\*\*).
  2. Contact Information for property owner (\*\*\*\*\*).
  3. Contact information for Worker 1 (\*\*\*\*\*) next of kin.
  4. A copy of Worker 1 (\*\*\*\*\*) work schedule for the period August 1 through August 31, 2011.
  5. A copy of the P.R.O.S. Occupational Health and Safety Manual.

**8.2 Industry**

- 8.2.1 Immediately following the workplace fatality, P.R.O.S. decided to abandon development and implementation of an animal therapy program.
- 8.2.2 P.R.O.S provided OHS with documentation demanded under the August 25, 2011 Notices to Produce.

**8.3 Additional Measures**

- 8.3.1 None.



**SECTION 9.0      SIGNATURES**

ORIGINAL REPORT SIGNED

Lead Investigator

October 23, 2012

Date

ORIGINAL REPORT SIGNED

Manager

October 25, 2012

Date

ORIGINAL REPORT SIGNED

Regional Director

October 25, 2012

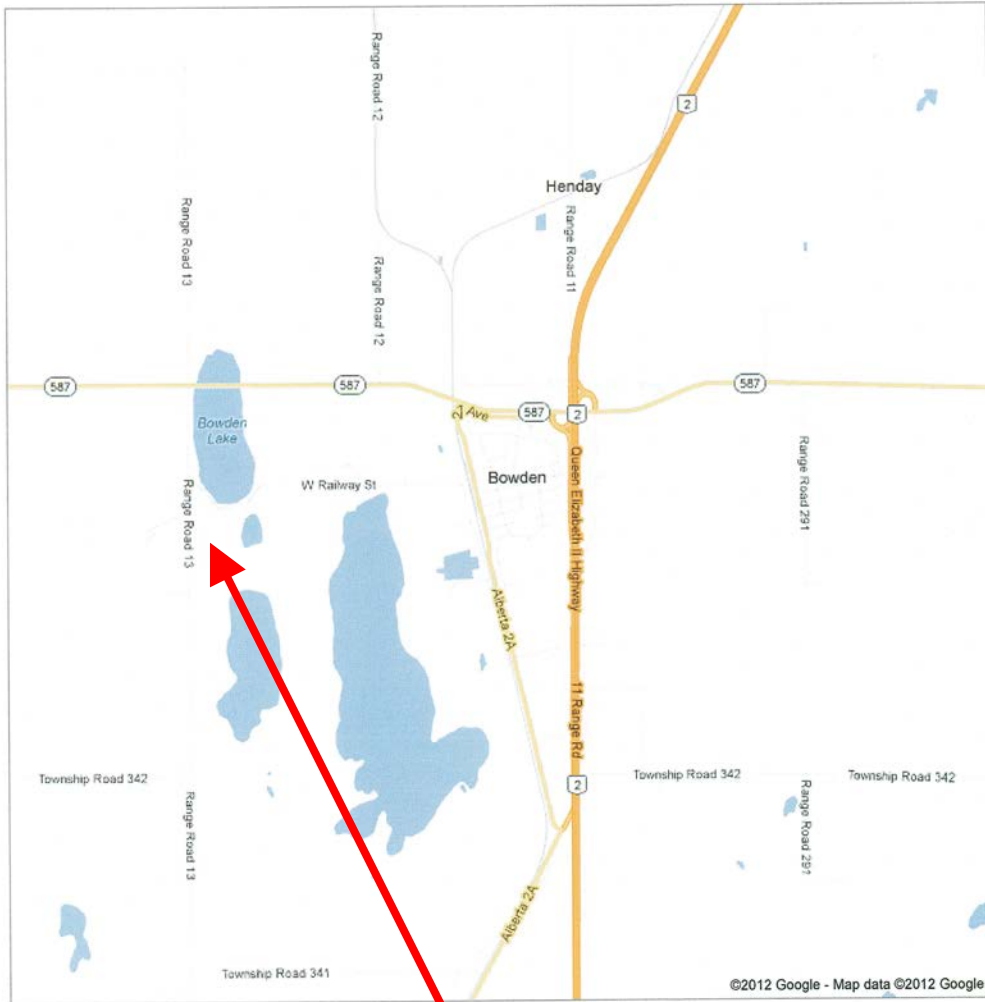
Date

**SECTION 10.0      ATTACHMENTS:**

Attachment A-Map

Attachment B-Photographs

N ↑



**34343 Range Road 13, Bowden, AB**

**Map** – The arrow shows the approximate location of the August 23, 2011 fatality.

712556 Alberta Inc. (P.R.O.S.)

File: F-3635971  
Attachment B  
Photograph 1 of 5



**P.R.O.S. Bowden  
Residential Care Facility**

**Photo of Entrance Driveway to 712556 Alberta Inc. (P.R.O.S.) 34343 Range Road 13, Bowden, AB residential care facility. (Looking East)**





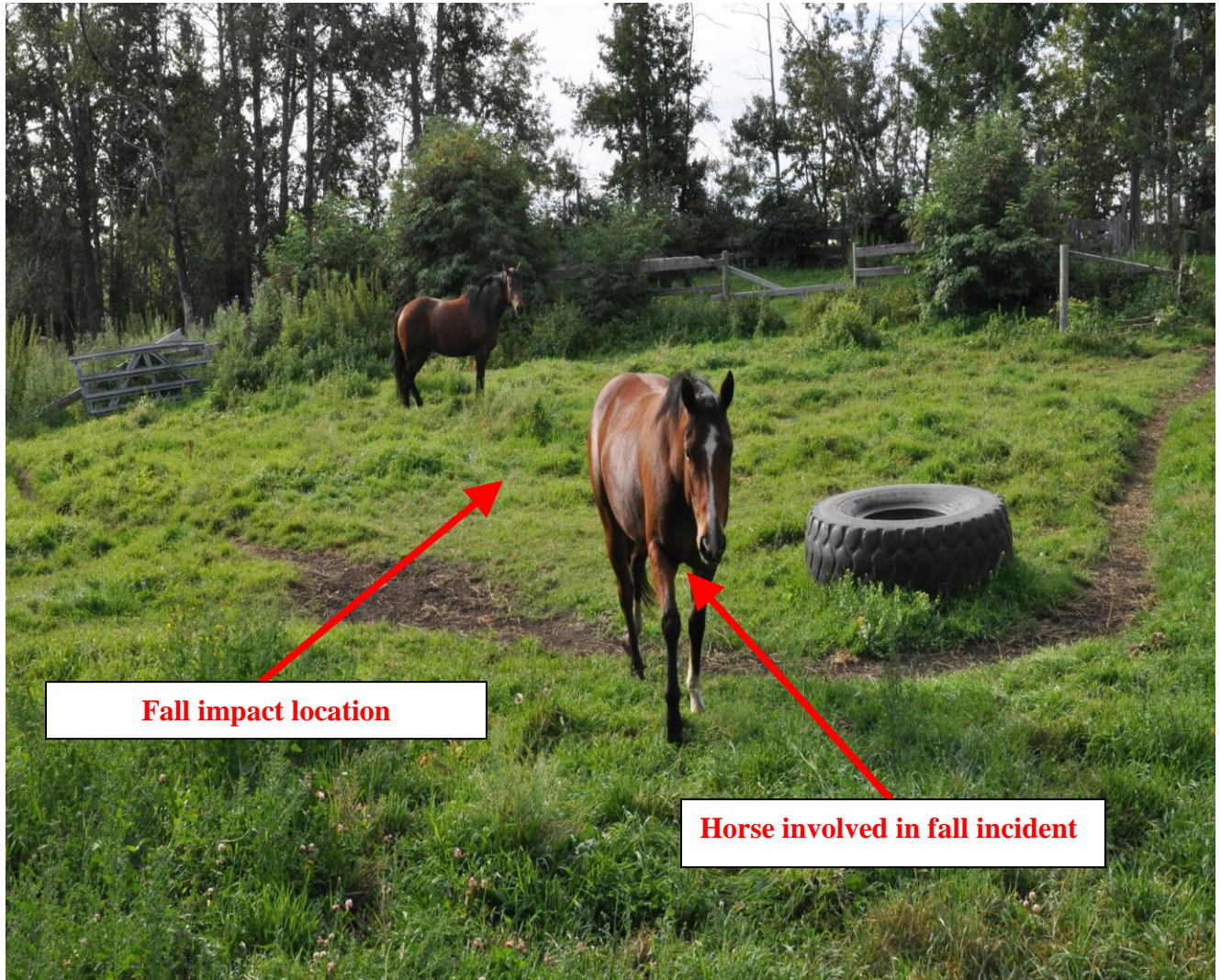
**Photo of the electric fence that indicates the east-west boundary between the P.R.O.S. Bowden facility and the adjacent fenced paddock area where the fall incident occurred. Taken from south property boundary of the P.R.O.S. property. (Looking south)**





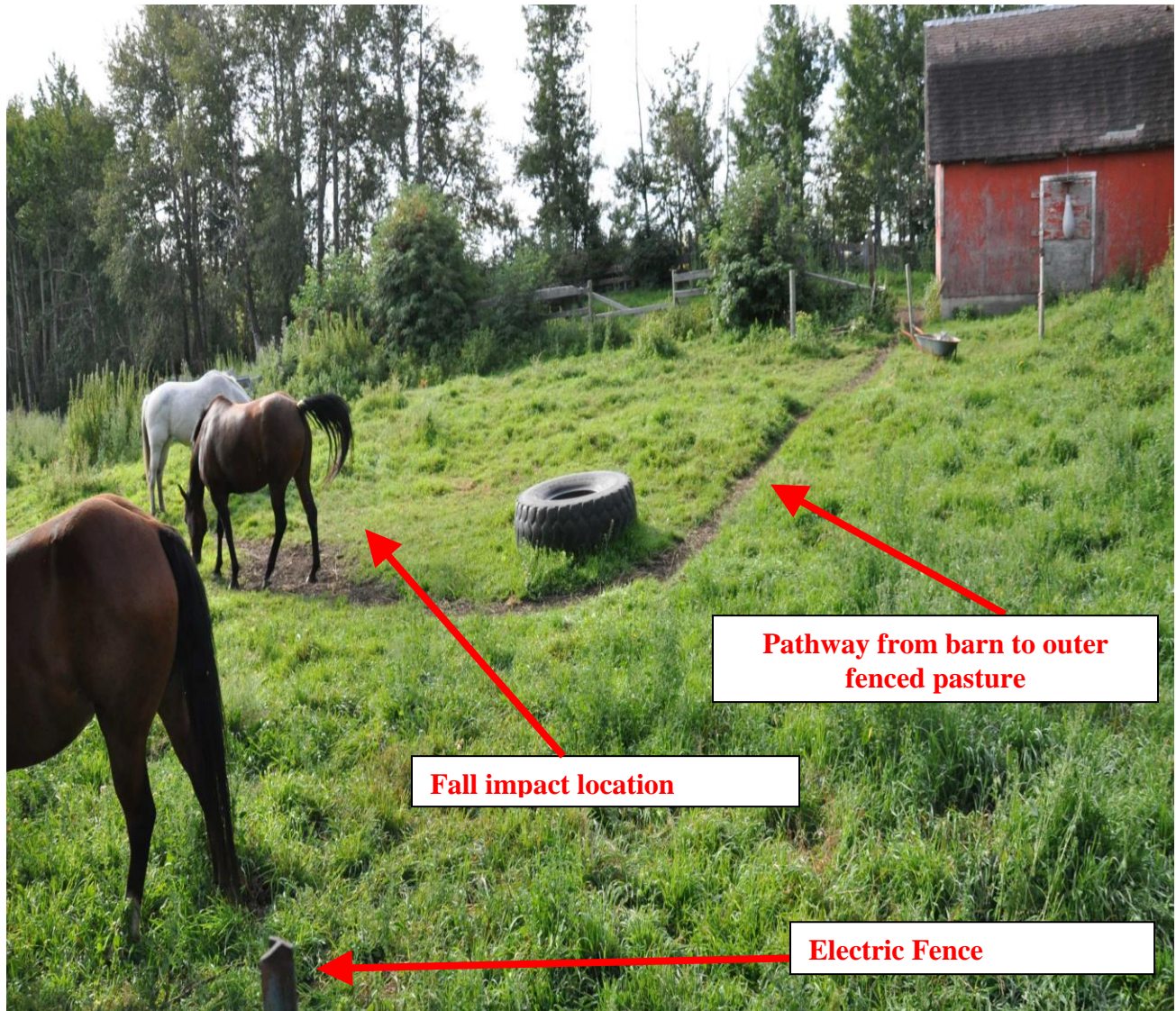
**Photo of the P.R.O.S. Bowden facility taken from within the electric fence of the adjacent paddock area where the fall incident occurred. (Looking north)**





**Photo of the fenced paddock area to the south of the P.R.O.S. Bowden facility showing the fall impact area and the horse involved in the incident. Taken from the P.R.O.S. Bowden facility property. (Looking south)**





**Photo of the fall impact location in the fenced paddock area and pathway from the barn to the nearby fenced pasture. (Taken from the P.R.O.S. Bowden facility property looking south)**