

<b>General Grazing Reserve Information</b>	
<b>Area:</b>	13,527 acres (5474.2 ha), 9,212 acres (3,728 ha) is tame forage
<b>Year Established:</b>	1960
<b>Terrain:</b>	Knobs and kettle
<b>Vegetation:</b>	Mixture of tame forage and native vegetation in the hills and hollows
<b>EcoRegion:</b>	Aspen Parkland Ecoregion
<b>Nearby Municipalities:</b>	24 kms southwest of Mannville
<b>Water Bodies:</b>	Nil

<b>Livestock Management Information</b>	
<b>Responsible Association:</b>	Minburn (privatized April 1, 1999) Cares for livestock and maintains the developed pastures in good, productive condition. Maintains all fence lines, dugouts, corrals and the buildings located at the headquarters site.
<b>Grazing Season:</b>	Mid-May to Mid-October
<b>Cattle:</b>	Approximately 9000 AUM's (may vary as allocated annually)
<b>Minimum number of Patrons</b>	45 patrons
<b>Application</b>	Please contact 780 835-7200 for grazing allotment application. Application deadline is January 15th.

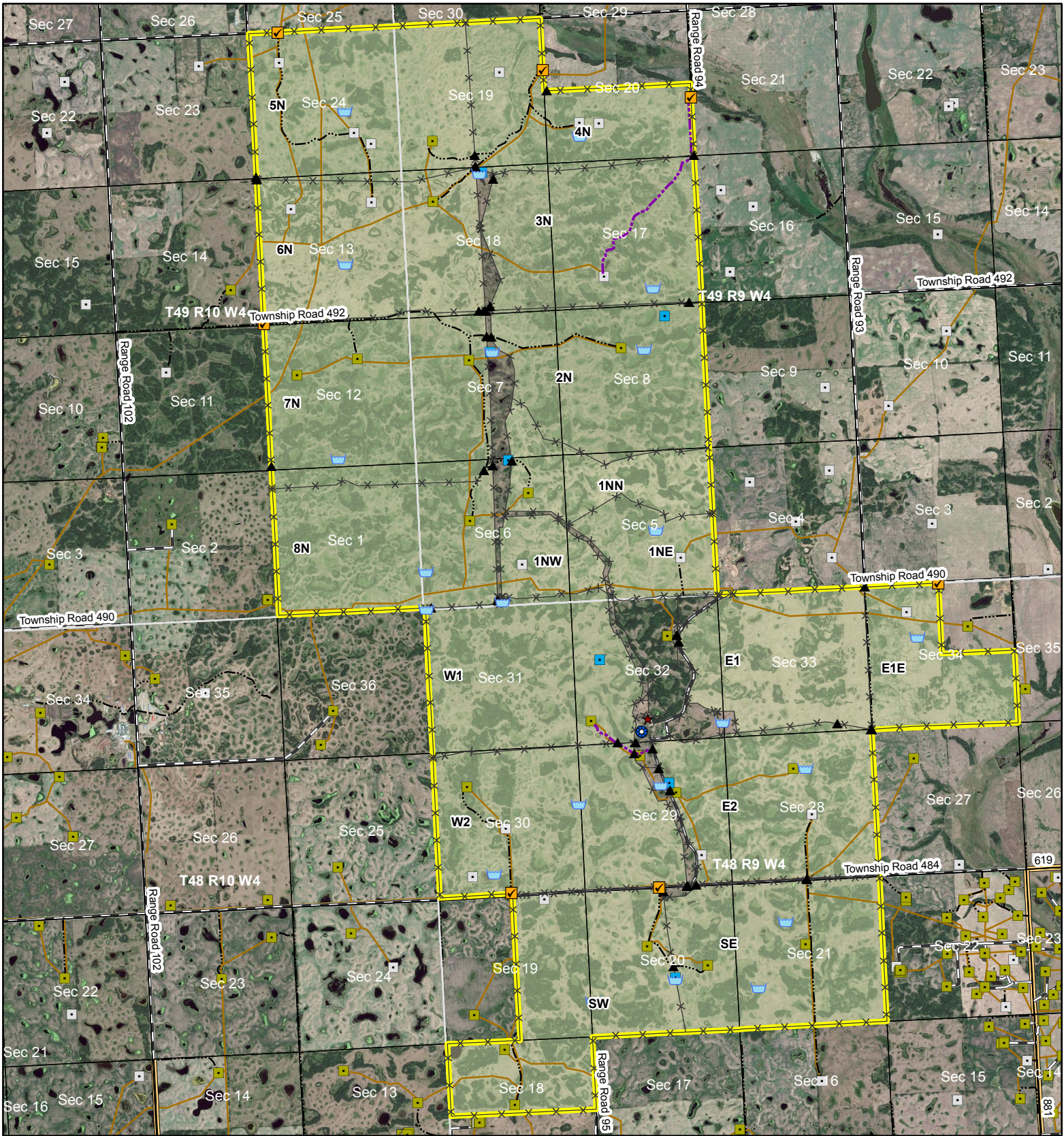
The initiative to develop the Minburn Provincial Grazing Reserve came from area residents. Both low quality farmland and adjacent forested public land were combined to form the Minburn Grazing Reserve.

Provincial Grazing Reserves are popular recreational sites for the general public recreational access condition information for Provincial Grazing Reserves can be found at:

- [Recreation on Agricultural Public Land](#)

You must contact the grazing reserve agrologist prior to accessing the reserve at:

- Tel: 780 645-6336



**Minburn  
Provincial Grazing  
Reserve**

**Recreational Access Map**

Contact Information:  
St Paul Prov. Grazing Reserve Office  
Phone: (780) 645-6336

- |               |                     |              |
|---------------|---------------------|--------------|
| Public Access | Abandoned Well Site | Pipeline     |
| Headquarters  | Well Site           | Trail        |
| Corral        | Fence               | Township     |
| Dugout        | Paved Road          | Section      |
| Gate          | Gravel Road         | PGR Boundary |
| Water Well    | Unimproved Road     |              |

© 2017 Government of Alberta  
Map Created: February 2017  
Created by: Range Resource Stewardship Section, Land Policy Branch, Alberta Environment and Parks

Information as depicted is subject to change, therefore, the Government of Alberta assumes no responsibility for discrepancies at the time of use.

Base Map Data provided by the Government of Alberta under the Alberta Open Government Licence.  
© 2015 SPOT Imagery

