



Forestry and Parks

Ministry Business Plan

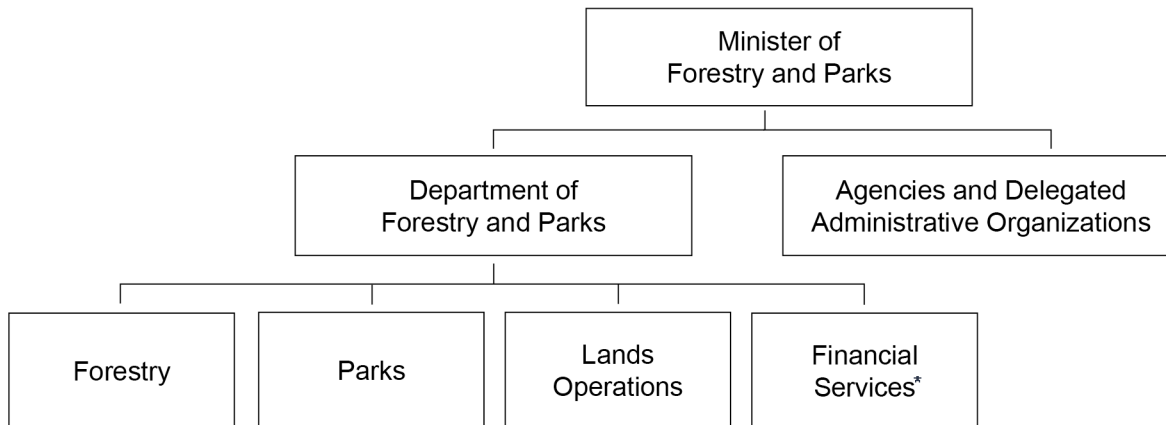
Forestry and Parks

Business Plan 2024-27

Ministry Fact Sheet – Mandate and Structure

The Ministry of Forestry and Parks supports the well-being of Albertans through sustainable development and management of Alberta’s lands, forests and parks. The ministry addresses land management, access, compliance and enforcement, and appeals and dispute resolution with respect to public lands in Alberta. It protects Alberta’s forest resources through effective and efficient wildfire management, sustainable forest management, and maintenance of forest health. It provides Albertans and visitors with opportunities to explore unique natural landscapes, engage in nature-based experiences and outdoor recreational activities, including hunting and angling, and learn about Alberta’s natural heritage. The ministry works with Albertans, other governments, Indigenous communities, non-profit and voluntary organizations, and the private sector to grow the recreation economy and maximize the benefits of Alberta Crown land, including forests, parks and rangelands.

The ministry is supported by ten public agencies that conduct work on behalf of or provide advice to the government. Three agencies accountable solely to the Minister of Forestry and Parks are the Forest Resource Improvement Association of Alberta, the Kananaskis Improvement District Council, and the Public Lands Appeal Board. The ministry shares responsibility with the Ministry of Environment and Protected Areas for seven additional agencies: the Alberta Conservation Association, the Alberta Professional Outfitters Society, Birch Mountains Wildland Provincial Park Cooperative Management Board, Birch River Wildland Provincial Park Cooperative Management Board, Dillon River Wildland Provincial Park Cooperative Management Board, Kazan Wildland Provincial Park Cooperative Management Board and the Richardson Wildland Provincial Park Cooperative Management Board. Information on these public agencies is available at www.alberta.ca/public-agency-list.cfm.



*Shares joint reporting responsibility with Agriculture and Irrigation

A more detailed description of Forestry and Parks and its programs and initiatives can be found at: <https://www.alberta.ca/forestry-and-parks>.

The Ministry of Forestry and Parks remains committed to regulatory approaches and program delivery that reduce unnecessary government oversight and emphasizes outcomes, in order to improve access to government services, attract investment, support innovation and competitiveness, and grow Alberta businesses.

Ministry business plans should be considered in conjunction with all budget documents - including the Fiscal Plan, Government Strategic Plan, and Estimates - which work together to provide a complete overview of government’s commitment to responsible fiscal management.

2024-27 Business Plan

Outcome 1

Effective stewardship of Alberta’s provincial Crown land and forests

Alberta’s provincial Crown land and forests are key components to Alberta’s economic prosperity. Leadership and effective consultation, collaboration and partnerships guide the ministry’s efforts and commitments for stewardship of Alberta’s natural resources resulting in healthy productive ecosystems for now and the future.

Key Objectives

- 1.1 Ensure environmental outcomes are achieved on Alberta’s Crown land while supporting use and access for Albertans.
- 1.2 Sustainably manage Alberta’s forests and rangelands to ensure healthy ecosystems and to support a variety of land uses.
- 1.3 Through effective partnerships with stakeholders and collaboration with Indigenous communities, continuously improve provincial Crown land stewardship and uphold the rights of Indigenous peoples.
- 1.4 Deliver a coordinated conservation enforcement program focused on education, prevention, and enforcement to help protect Alberta’s natural resources and promote safety of Albertans on Crown lands.

Initiatives Supporting Key Objectives

- In 2024-25, \$9.5 million is allocated to the watercourse crossing program.
- In 2024-25, \$10.3 million is allocated to Crown land enforcement and awareness.

Performance Metrics

1.a Performance Indicator: New area impacted by mountain pine beetle infestation

Measures the annual newly mountain pine beetle (MPB) infested land area. MPB impacted area is computed as the area (hectares) of inventory polygons that contain at least one MPB killed tree. MPB expansion into new forested areas reduces the health and resiliency of Alberta’s forests. By causing the death of infested trees, MPB can increase wildfire risk, reduce the opportunity for use in forest products, and can negatively impact forest values such as habitat, watershed protection or recreational land uses.

	2018-19	2019-20	2020-21	2021-22	2022-23
New Hectares Impacted by Mountain Pine Beetle	178,909	77,637	23,051	8,981	1,934

1.b Performance Measure: Forest health (under development)

Measures the percentage of forest regrowth as a result of reforestation. Reforestation is a critical component to forest sustainability. Monitoring and reporting adherence to regeneration standards will provide an indication of the continued economic, social and environmental values that Albertans can expect from forests.

1.c Performance Measure: Rangeland sustainability (under development)

Measures the percentage of grazing leases in good standing. Effective management contributes to broader ecosystem services including biodiversity conservation, carbon sequestration, forage for grazing and browsing animals, and habitat for a vast array of fish and wildlife.

Outcome 2

Provide timely, transparent decisions to support sustainable forestry, natural resource, and Crown land recreation economic opportunities consistent with government plans and policy

To effectively support diversified economic prosperity, the ministry seeks to create a business environment and infrastructure upon which Crown land economic opportunities can be achieved to their full potential.

Key Objectives

- 2.1 Minimize regulatory and process barriers to improve service delivery, reduce red tape, and support economic opportunities on Crown land.
- 2.2 Deliver programs and services to support long-term access to a sustainable and secure fibre supply for the forestry sector.
- 2.3 Advocate for fair and open access to markets for the forestry sector.
- 2.4 Apply integrated development and capital planning to support infrastructure and service improvements for high volume and potential new tourist areas.

Initiatives Supporting Key Objectives

- In 2024-25, \$2.7 million is allocated to support softwood lumber litigation and negotiation.

Performance Metrics

2.a Performance Measure: Percentage of *Public Lands Act* applications processed within established service standards

Measures the percentage of applications for use of public land where the service standards for regulatory approval decisions are met. Last actual was 77 per cent in 2022.

Targets	2024-25	90%	2025-26	93%	2026-27	97%
---------	---------	-----	---------	-----	---------	-----

Outcome 3

Albertans and visitors enjoy safe, accessible, and sustainable Crown land recreation experiences

Alberta has significant Crown land recreation opportunities which contribute to the province's economic prosperity and job opportunities for Albertans. Forestry and Parks works with Albertans, industry, Indigenous communities and associated agencies to ensure the opportunities are safe, accessible and sustainable.

Key Objectives

- 3.1 Develop a Crown land recreation and conservation strategy to expand public access while protecting natural spaces.
- 3.2 Maintain or improve operations, infrastructure, and visitor experience on Alberta provincial parks and public lands through capital investment, education and compliance, and implementation of the *Trails Act*.
- 3.3 Through investment, partnerships, and a common-sense fee structure, ensure Albertans have access to sufficient high quality and low-cost outdoor recreation sites.
- 3.4 Enhance angling and hunting opportunities through policy, program and consultation to meet expectations of the public, stakeholders and Alberta's obligations to First Nations communities and recognized Métis harvesters.

Initiatives Supporting Key Objectives

- In 2024-25, \$90.7 million is allocated to refurbish and enhance outdoor recreational opportunities, natural features and buildings on Crown land.
- In 2024-25, \$10 million is allocated to refurbish and build recreational trails on public land.

- In 2024-25, \$91.6 million is allocated to maintain operations of the Alberta Parks system.

Performance Metrics

3.a Performance Measure: Satisfaction with the quality of services and facilities of Alberta Parks

Reports on the percentage of Albertans who visited an Alberta Parks site in the last 12 months and are satisfied with the quality of services and facilities. Scope of measure expanded in 2024-27 to include all parks services and facilities. Data is collected through an annual survey. Last actual was 85 per cent in 2022.

Targets	2024-25	85%	2025-26	85%	2026-27	85%
---------	---------	-----	---------	-----	---------	-----

3.b Performance Indicator: Albertans that visited an Alberta Parks site

Percentage of Albertans who visited an Alberta Parks site in the last 12 months, as reported through an annual survey. Forestry and Parks provide education and access to provincial parks for Albertans to reconnect with nature and participate in outdoor recreational and cultural activities. Monitoring helps assess the level of visitation across the Alberta Parks system.

	2022-23
Percentage of Albertans that visited an Alberta Parks site in the last 12 months	56%

Outcome 4

Wildfire management promotes safe and resilient communities and healthy, productive forest ecosystems

Management of wildfire threats through prevention, preparation, response and recovery reduces risk to human life, communities, and critical infrastructure, and preserves natural ecosystems.

Key Objectives

- 4.1 Explore and adopt innovative wildfire management technologies to promote the health and resilience of Alberta's forest resources.
- 4.2 Enhance wildfire response capacity.
- 4.3 Replace the Fire Information Resource System (FIRES) and other wildfire applications with a modernized application platform to enhance wildfire decision support capability and meet business reporting requirements.
- 4.4 Develop a Provincial Wildfire Mitigation Strategy with ministry partners.

Initiatives Supporting Key Objectives

- In 2024-25, \$27.3 million to support wildfire innovation and mitigation initiatives.

Performance Metrics

4.a Performance Measure: Percentage of wildfires contained before 10 a.m. the day following assessment

Measures wildfire containment time to minimize losses and costs from the risk of wildfires. In 2022, the ministry contained 94.0 per cent of wildfires before 10 a.m. the day following assessment.

Targets	2024-25	95%	2025-26	95%	2026-27	95%
---------	---------	-----	---------	-----	---------	-----

STATEMENT OF OPERATIONS

(thousands of dollars)

	Comparable		2024-25 Estimate	2025-26 Target	2026-27 Target
	2023-24 Budget	2023-24 Forecast			
REVENUE					
Transfers from Government of Canada	25,911	7,957	9,236	9,931	10,645
Premiums, Fees and Licences	301,903	255,514	262,899	221,634	234,309
Other Revenue	13,617	13,617	13,617	13,617	13,617
Ministry Total	341,431	277,088	285,752	245,182	258,571
Inter-Ministry Consolidation Adjustment	(1,052)	(1,052)	(1,052)	(1,052)	(1,052)
Consolidated Total	340,379	276,036	284,700	244,130	257,519
EXPENSE					
Ministry Support Services	4,368	4,368	5,511	5,602	5,672
Forests	183,598	1,001,644	213,143	212,977	216,433
Parks	119,983	118,123	127,043	128,968	129,142
Lands	47,185	46,802	53,060	48,133	48,630
Hunting and Angling	13,290	13,690	13,328	13,402	13,484
Ministry Total	368,424	1,184,627	412,085	409,082	413,361
Inter-Ministry Consolidation Adjustment	(2,169)	(2,169)	(2,169)	(2,169)	(2,169)
Consolidated Total	366,255	1,182,458	409,916	406,913	411,192
Net Operating Result	(25,876)	(906,422)	(125,216)	(162,783)	(153,673)
CAPITAL INVESTMENT					
Forests	10,583	10,583	18,852	22,042	21,744
Parks	63,496	52,409	96,715	55,832	59,841
Lands	11,031	14,665	12,578	8,795	6,285
Consolidated Total	85,110	77,657	128,145	86,669	87,870