



2018 Alberta Traffic Collision Facts

alberta.ca/collision-vehicle-licence-statistics.aspx

Collision Facts

Total Number of Collisions	
Fatal	246
Injury	12,852
PDO	129,498
Total	142,596

PDO means 'Property Damage Only';
in other words, nobody was hurt

Total Number of Casualties	
Fatalities	289
Major Injuries	2,587
Minor Injuries	14,468
Total	17,344

Urban	Rural
Fatal Collisions	
24%	76%
Injury Collisions	
75%	25%
PDO Collisions	
85%	15%

Total Collisions - Day of Week

Monday	19,986
Tuesday	21,536
Wednesday	21,359
Thursday	21,499
Friday	24,743
Saturday	18,809
Sunday	14,631

Total Collisions - Time Period

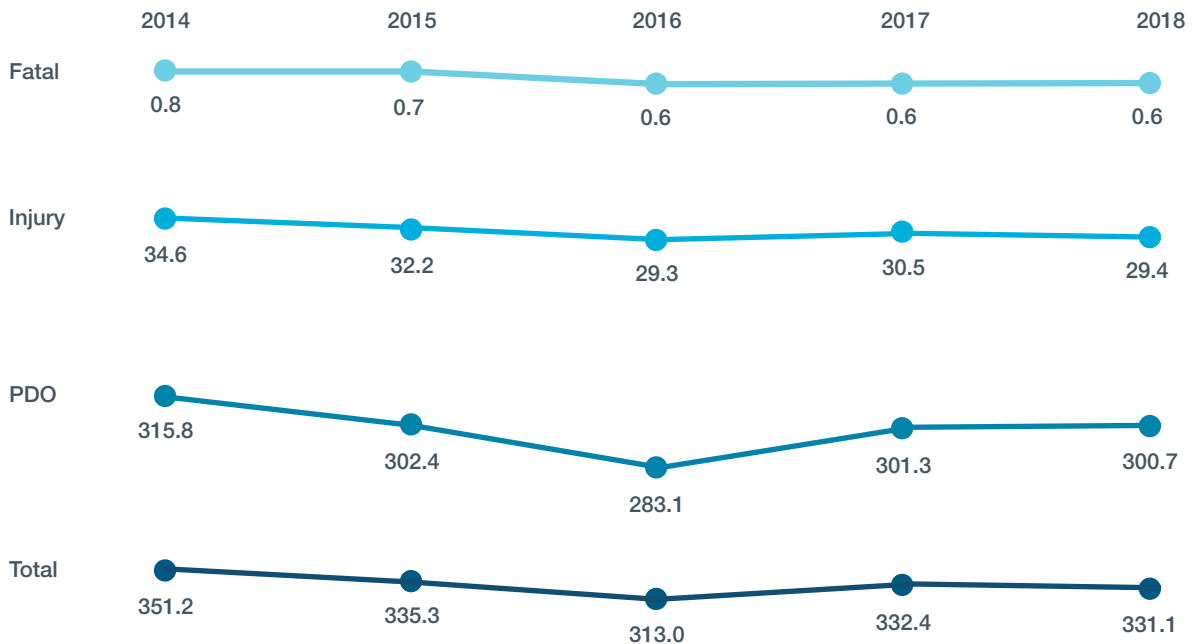
Early Morning	6,857
Morning Rush Hour	27,311
Mid-Day	35,399
Evening Rush Hour	41,592
Evening	18,685
Late Night	6,574

Month of Collision Occurrence

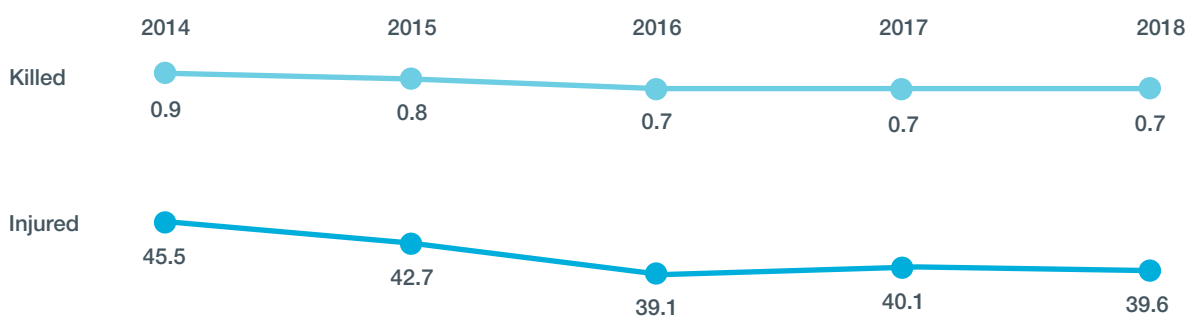
	Jan	Feb	Mar	Apr	May	Jun	Jul	Aug	Sep	Oct	Nov	Dec
Fatal	15	15	11	15	18	27	26	27	23	27	21	21
Injury	1,246	1,156	1,154	803	996	1,045	1,026	978	1,040	1,139	1,200	1,069
PDO	13,361	13,396	11,458	9,268	9,134	9,728	9,248	8,716	9,224	11,163	13,707	11,088

Rates

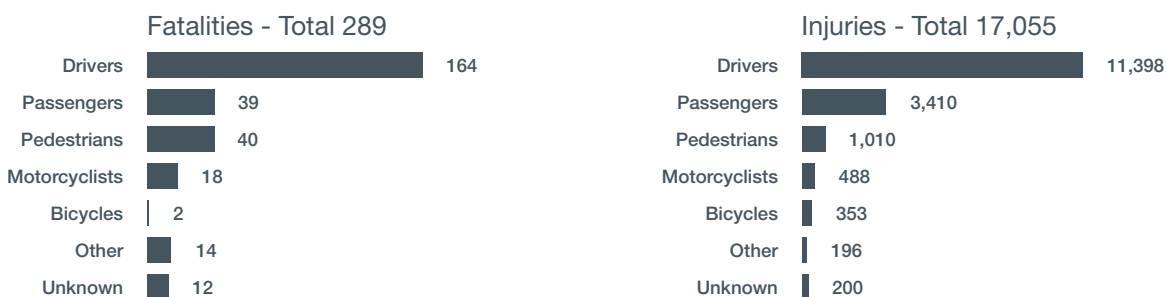
Collision Rates per 10,000 Population



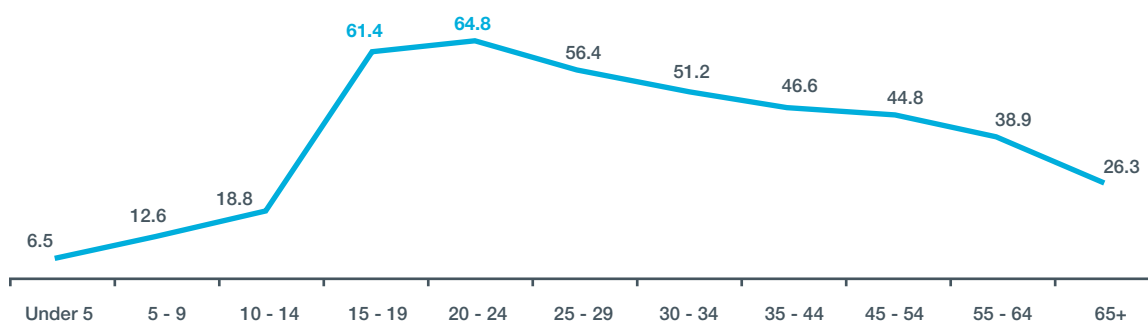
Casualty Rates per 10,000 Population



Victims



Casualty Rate per 10,000 Population by Age



The Alberta seat belt wearing rate was **97.4%** in 2017*

Seatbelt users had a much lower injury rate (**6.7%**) than those not using seatbelts (**18.1%**)

Did not use a seatbelt



Used a seatbelt



Fatal Injury
 Major Injury
 Minor Injury

Drivers



82.9% of total collisions involved at least one driver who committed a driving error

The crash factors that lead to deaths and injuries include things like speeding, 'tailgating' and impaired driving



Speeding Increases Collision Severity

1 in 4 drivers in fatal collisions (**23.2%**) and 1 in 13 drivers in injury crashes (**7.7%**) were driving at an unsafe speed

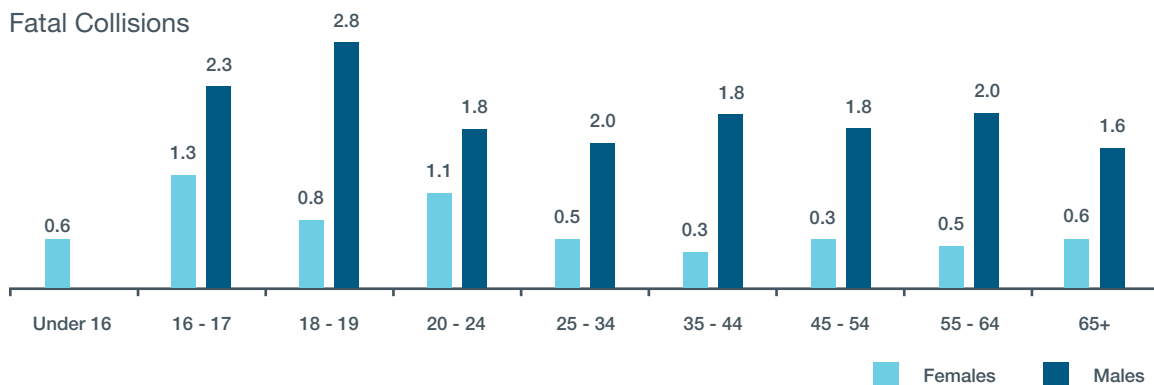


57% of crashes on rural highways involved an animal

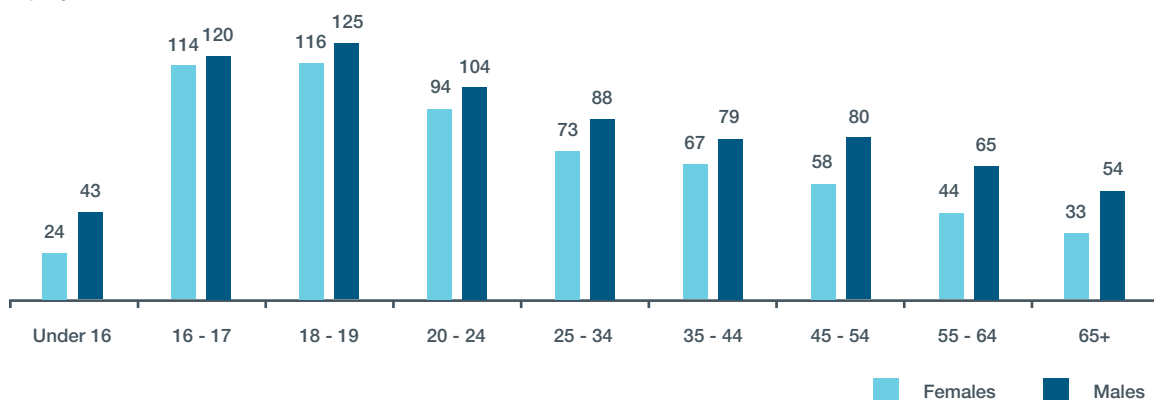
Of these crashes, **5%** resulted in human casualties

Involvement Rates per 10,000 Licensed Drivers

Fatal Collisions

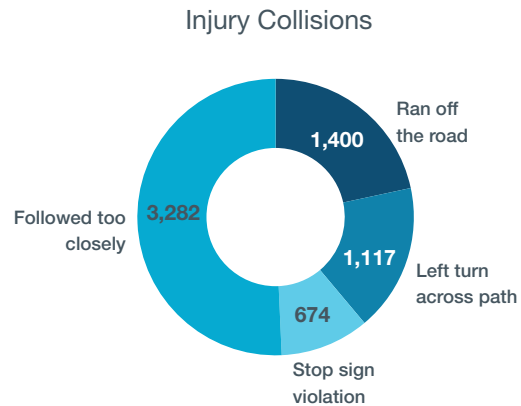


Injury Collisions



Drivers

Most Common Driver Errors



Impaired Drivers

1 in 8 drivers in fatal collisions was legally impaired (13.4%)



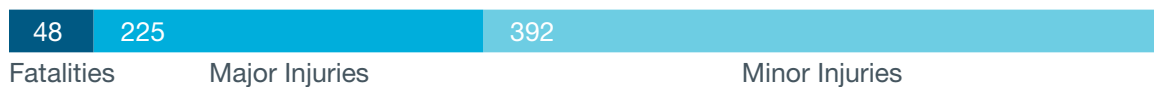
1 in 50 drivers in injury collisions was legally impaired (2.0%)



453 legally impaired drivers in fatal and injury crashes



Road users sustained

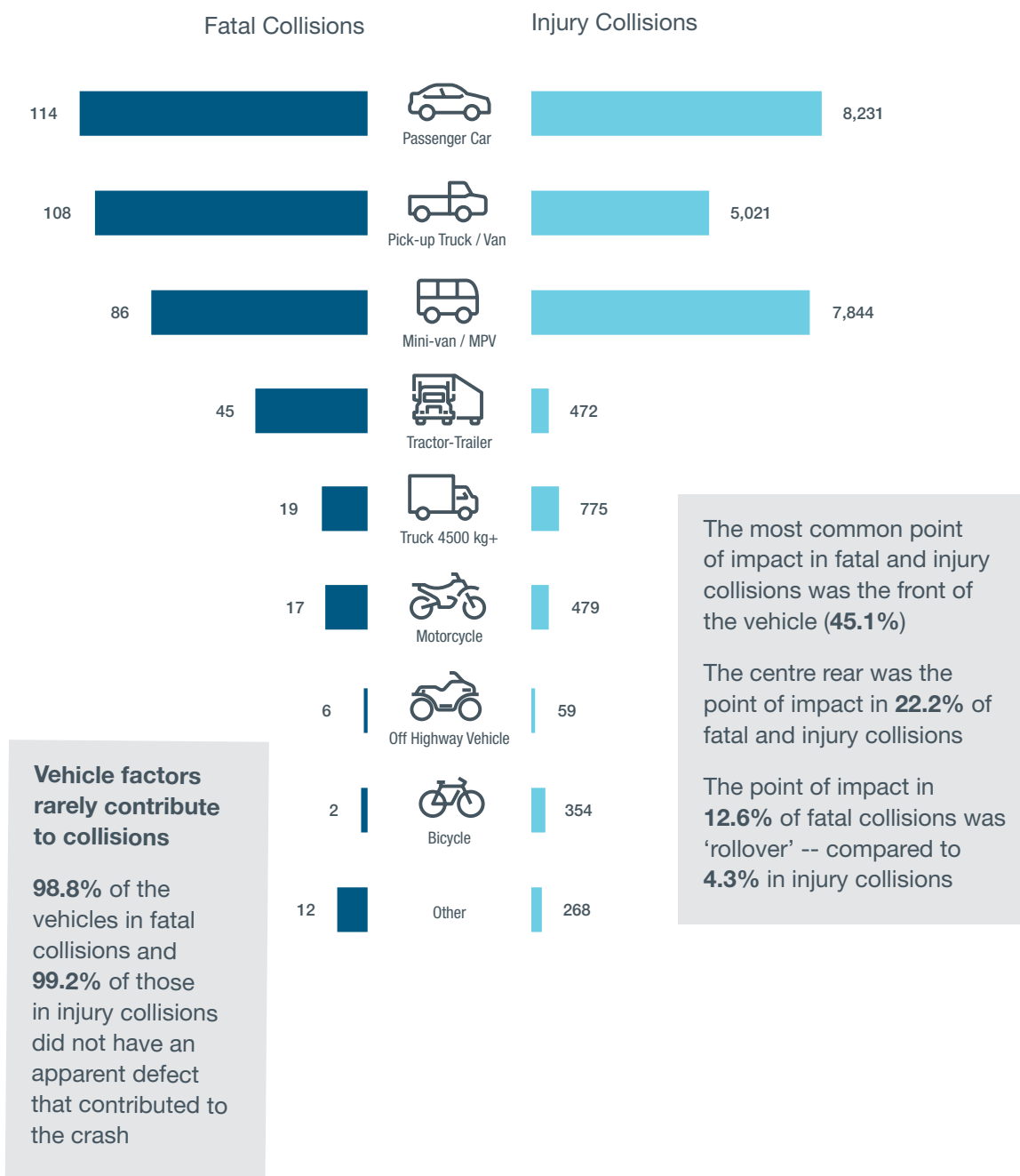


Involvement rates per 1,000 licensed drivers show that:

Males aged 20 to 21 were most likely to have been legally impaired

Over three times **more males than females** were legally impaired

Vehicles



Visit alberta.ca/collision-vehicle-licence-statistics.aspx for more information on motor vehicle collisions in Alberta

*Visit transportation.alberta.ca/Content/docType48/Production/Seat_Belt_Use_2006-2017.pdf for more information on seatbelt wearing rates in Alberta.

Note: The information presented in this fact sheet is based on those cases where the respective information was specified on the Alberta Collision Report Form. For more information on the categories presented in this report and motor vehicle collisions in Alberta, please refer to the annual Alberta Traffic Collision Statistics report, available at the above website.