

Alberta traffic collision facts 2019

alberta.ca/collision-vehicle-licence-statistics.aspx



Collision facts

Total Number of Collisions	
Fatal	215
Injury	11,738
PDO	120,119
Total	132,072

PDO means 'Property Damage Only';
in other words, nobody was hurt

Total Number of Casualties	
Fatalities	233
Major Injuries	2,267
Minor Injuries	13,097
Total	15,597

Urban	Rural
Fatal Collisions	
34%	66%
Injury Collisions	
76%	24%
PDO Collisions	
85%	15%

Total Collisions - Day of Week

Monday	18,844
Tuesday	20,360
Wednesday	20,312
Thursday	19,694
Friday	22,033
Saturday	17,135
Sunday	13,694

Total Collisions - Time Period

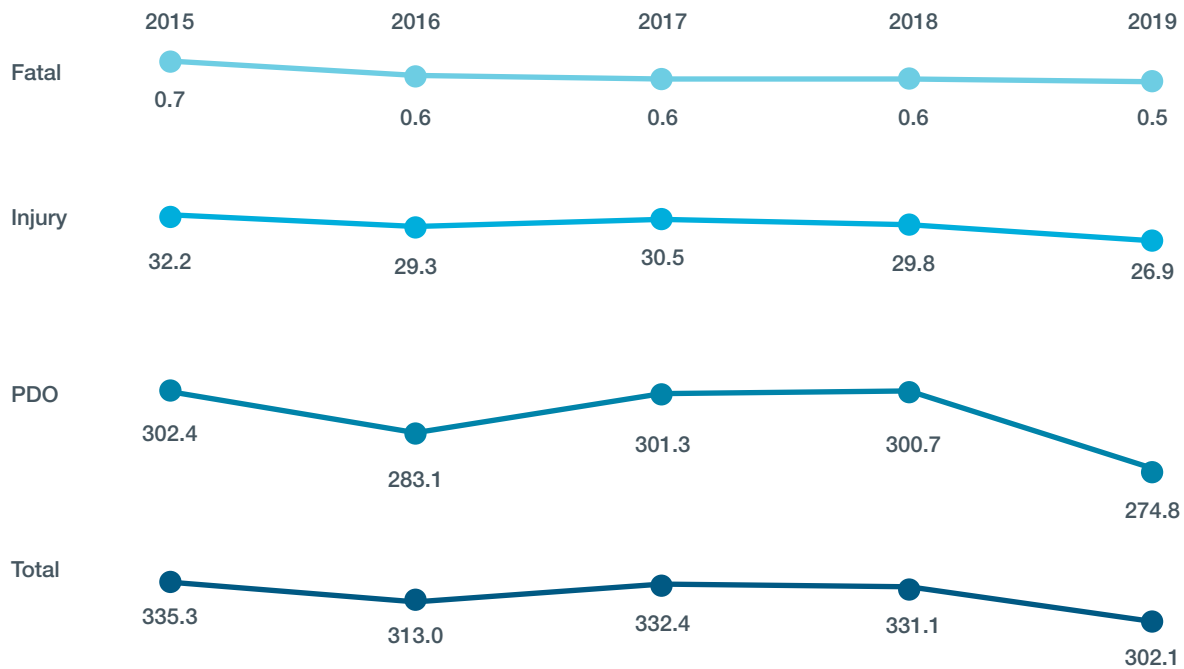
Early Morning	6,537
Morning Rush Hour	25,764
Mid-Day	33,224
Evening Rush Hour	39,525
Evening	16,860
Late Night	5,436

Month of Collision Occurrence

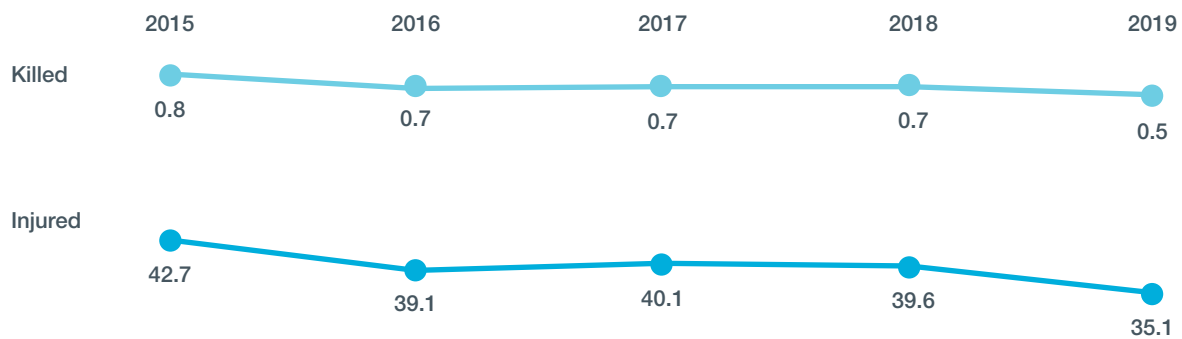
	Jan	Feb	Mar	Apr	May	Jun	Jul	Aug	Sep	Oct	Nov	Dec
Fatal	16	16	14	20	13	14	26	19	21	12	24	20
Injury	1,166	1,104	868	751	826	892	919	952	1,004	1,064	1,125	1,067
PDO	11,158	15,105	9,908	7,670	8,192	8,862	8,524	8,055	8,719	9,903	12,748	11,275

Rates

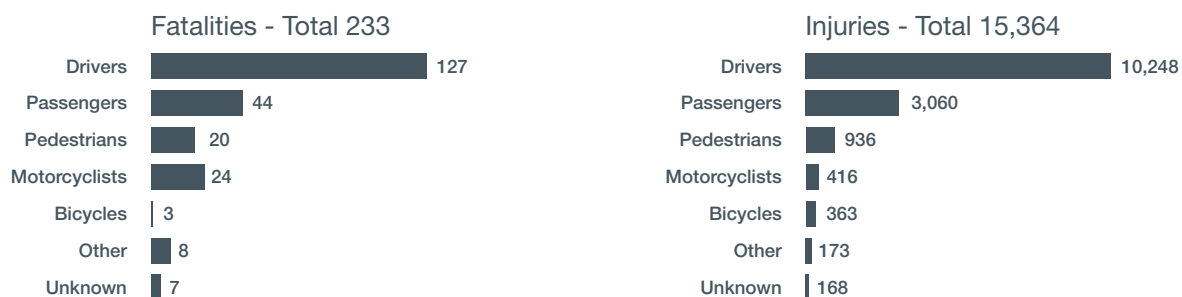
Collision Rates per 10,000 Population



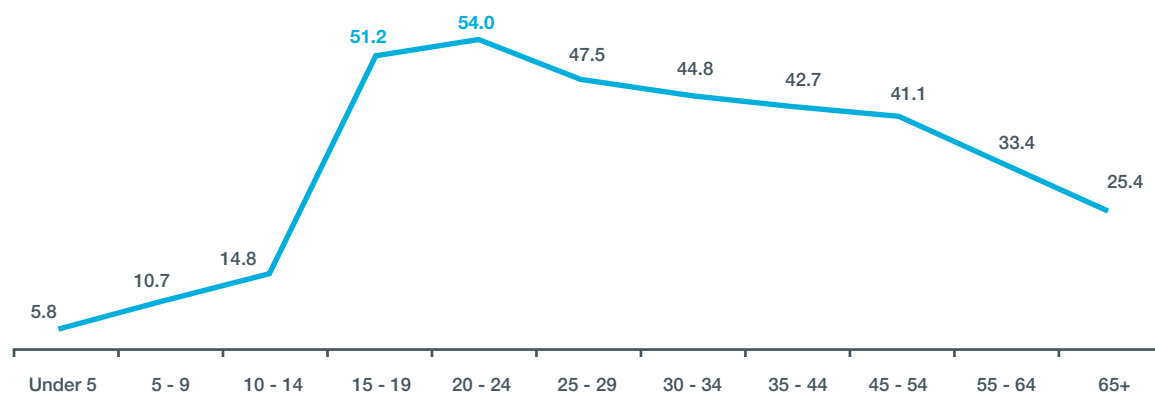
Casualty Rates per 10,000 Population



Victims



Casualty Rate per 10,000 Population by Age



The Alberta seat belt wearing rate was **97.4%** in 2017*

Seatbelt users had a much lower injury rate (**6.5%**) than those not using seatbelts (**16.7%**)

Did not use a seatbelt



Used a seatbelt



■ Fatal Injury ■ Major Injury ■ Minor Injury

Drivers



82.5% of total collisions involved at least one driver who committed a driving error

The crash factors that lead to deaths and injuries include things like speeding, 'tailgating' and impaired driving



Speeding Increases Collision Severity

1 in 4 drivers in fatal collisions (**23.1%**) and 1 in 13 drivers in injury crashes (**7.7%**) were driving at an unsafe speed

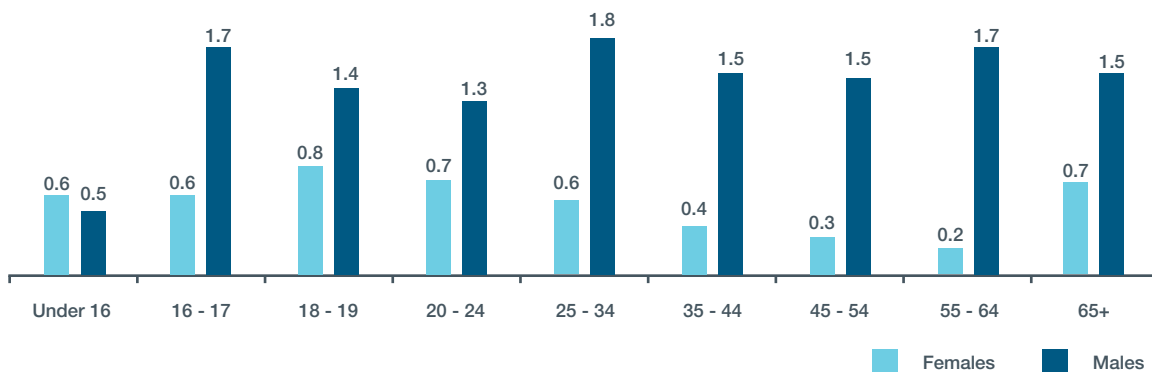


59% of crashes on rural highways involved an animal

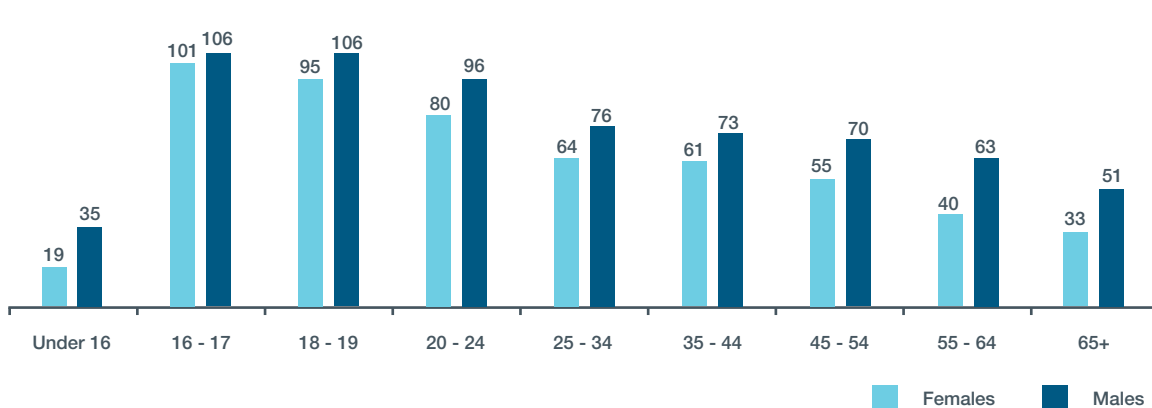
Of these crashes, **5%** resulted in human casualties

Involvement Rates per 10,000 Licensed Drivers

Fatal Collisions



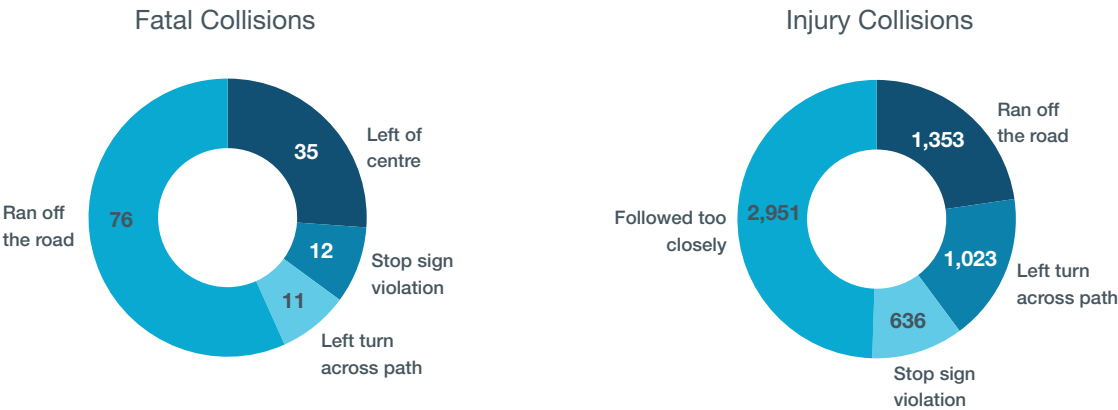
Injury Collisions





Drivers

Most Common Driver Errors

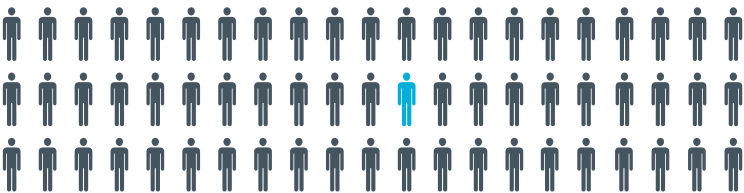


Impaired Drivers

1 in 9 drivers in fatal collisions was legally impaired (11.8%)



1 in 63 drivers in injury collisions was legally impaired (1.6%)



326 legally impaired drivers in fatal and injury crashes



Road users sustained

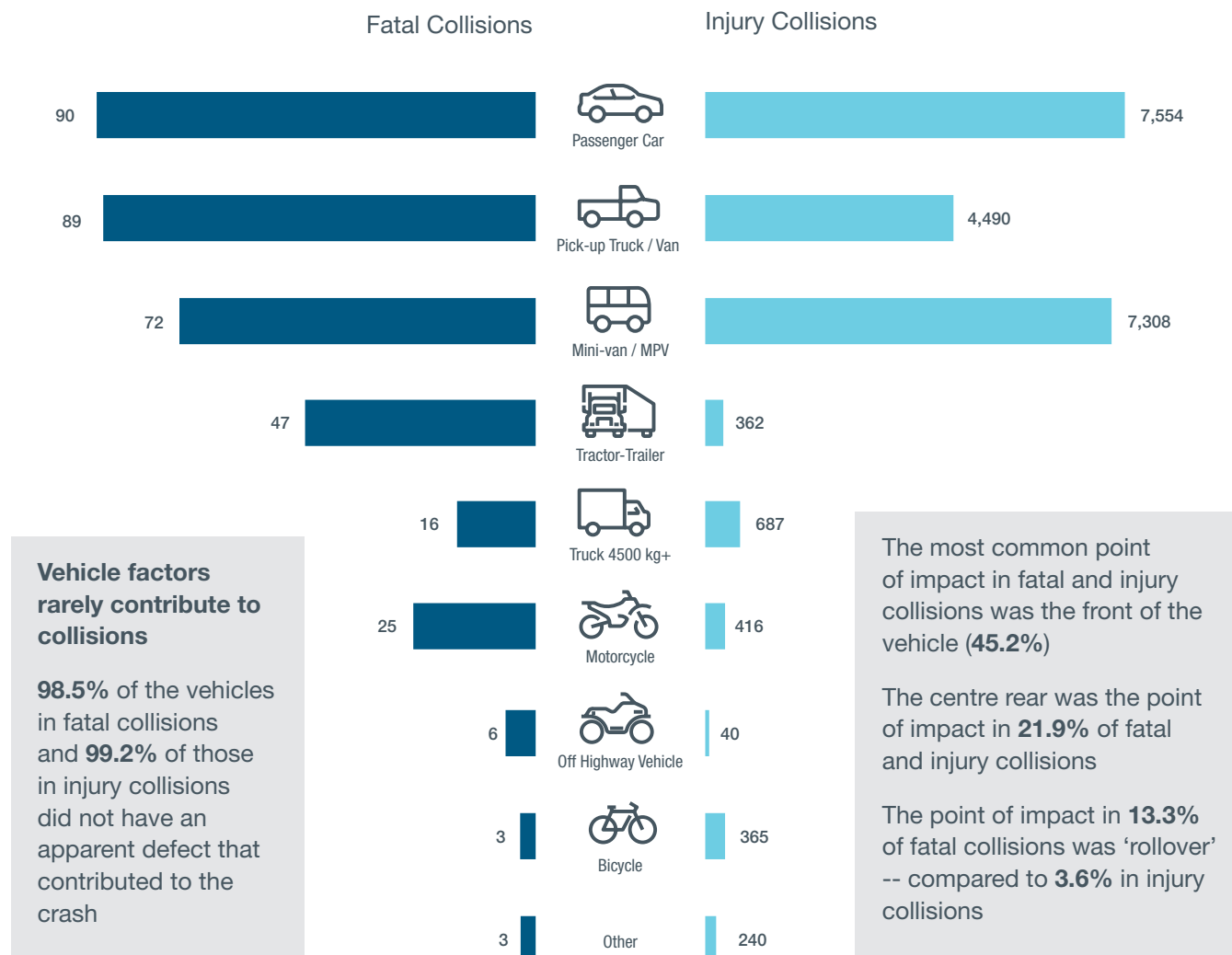


Involvement rates per 1,000 licensed drivers show that:

Males aged 25 to 29 were most likely to have been legally impaired

Almost three times **more males than females** were legally impaired

Vehicles



Visit alberta.ca/collision-vehicle-licence-statistics.aspx for more information on motor vehicle collisions in Alberta

*Visit transportation.alberta.ca/Content/docType48/Production/Seat_Belt_Use_2006-2017.pdf for more information on seatbelt wearing rates in Alberta.

Note: The information presented in this fact sheet is based on those cases where the respective information was specified on the Alberta Collision Report Form. For more information on the categories presented in this report and motor vehicle collisions in Alberta, please refer to the annual Alberta Traffic Collision Statistics report, available at the above website.

