

Alberta traffic collision facts 2020

alberta.ca/collision-vehicle-licence-statistics.aspx



JANUARY 2023

Alberta

Classification: Public

©2023 Government of Alberta | January 2023 | Ministry of Transportation and Economic Corridors

Collision facts

Total Number of Collisions	
Fatal	207
Injury	9,092
PDO	85,702
Total	95,001

PDO means 'Property Damage Only';
in other words, nobody was hurt

Total Number of Casualties	
Fatalities	235
Major Injuries	2,085
Minor Injuries	9,759
Total	12,079

Urban	Rural
Fatal Collisions	
29%	71%
Injury Collisions	
72%	28%
PDO Collisions	
82%	18%

Total Collisions - Day of Week

Monday	13,313
Tuesday	14,957
Wednesday	14,983
Thursday	14,825
Friday	15,159
Saturday	12,170
Sunday	9,594

Total Collisions - Time Period

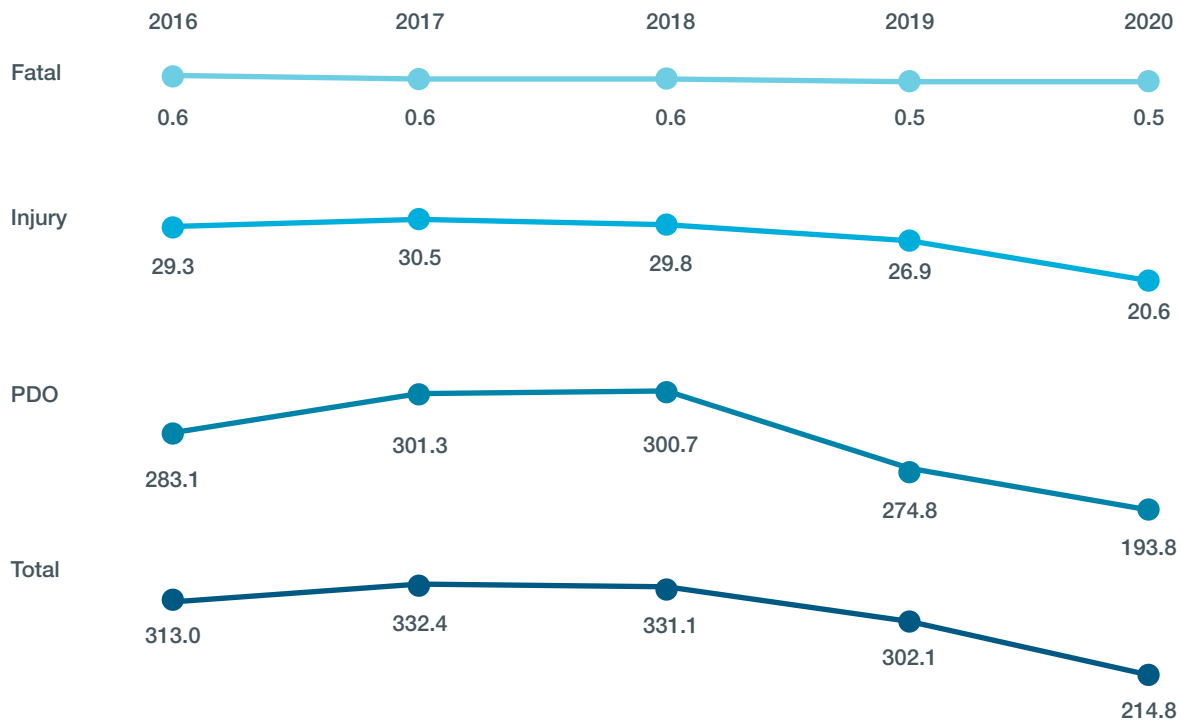
Early Morning	4,981
Morning Rush Hour	16,571
Mid-Day	24,405
Evening Rush Hour	27,508
Evening	12,499
Late Night	4,170

Month of Collision Occurrence

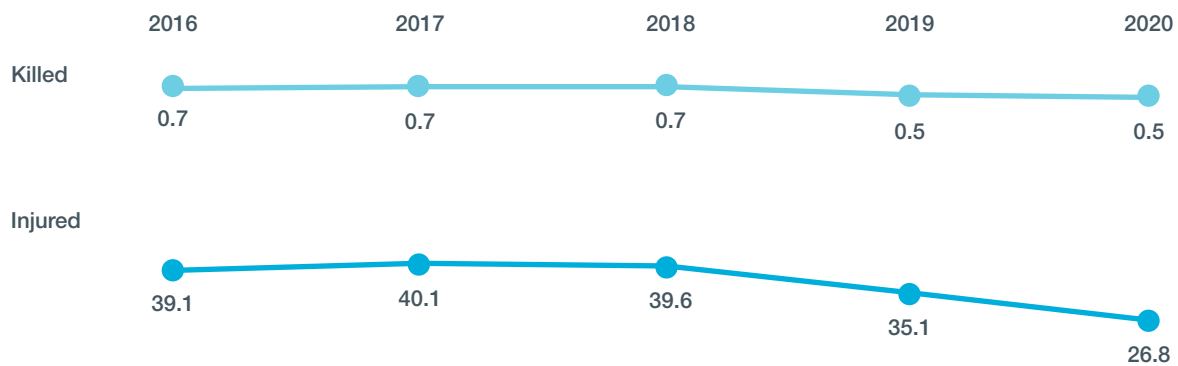
	Jan	Feb	Mar	Apr	May	Jun	Jul	Aug	Sep	Oct	Nov	Dec
Fatal	11	17	10	11	15	15	31	16	20	26	21	14
Injury	1,110	940	632	319	529	710	813	859	869	852	788	671
PDO	12,551	9,804	6,684	3,469	4,226	5,673	6,363	6,395	6,287	7,993	8,921	7,336

Rates

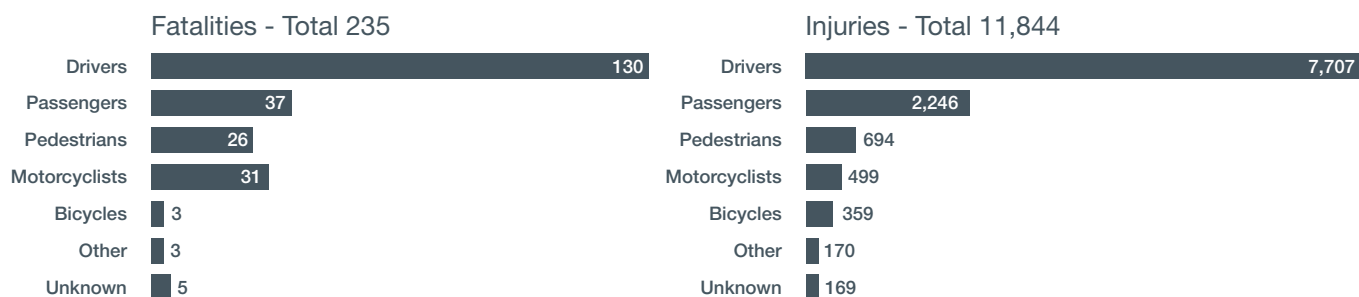
Collision Rates per 10,000 Population



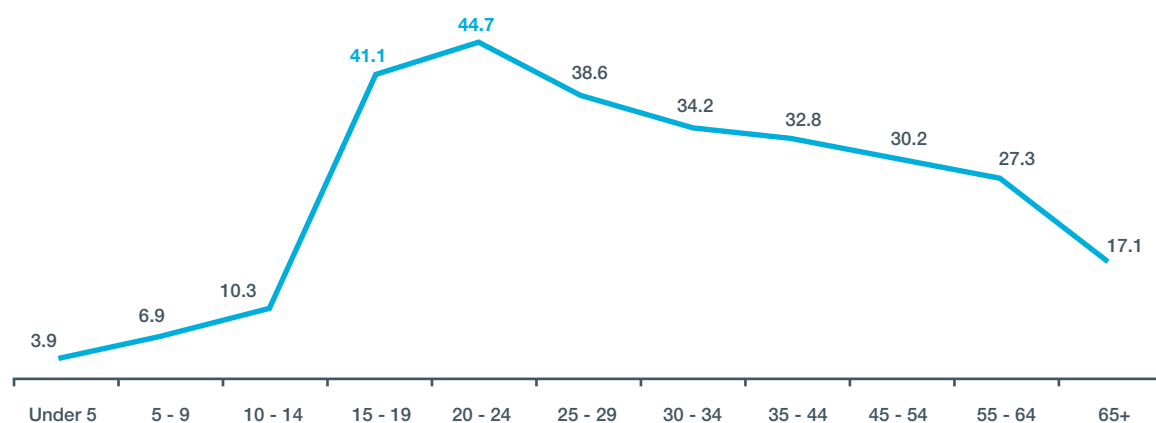
Casualty Rates per 10,000 Population



Victims



Casualty Rate per 10,000 Population by Age



The Alberta seat belt wearing rate was **97.4%** in 2017*

Seatbelt users had a much lower injury rate (**7.1%**) than those not using seatbelts (**17.6%**)

Did not use a seatbelt



Used a seatbelt



Drivers



79.9% of total collisions involved at least one driver who committed a driving error

The crash factors that lead to deaths and injuries include things like speeding, 'tailgating' and impaired driving



Speeding Increases Collision Severity

1 in 4 drivers in fatal collisions (**26.2%**) and 1 in 13 drivers in injury crashes (**7.3%**) were driving at an unsafe speed

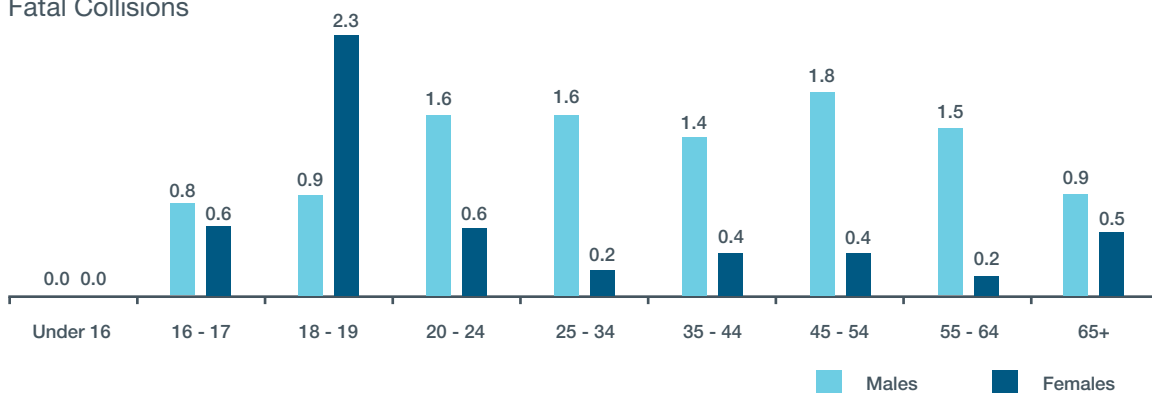


60% of crashes on rural highways involved an animal

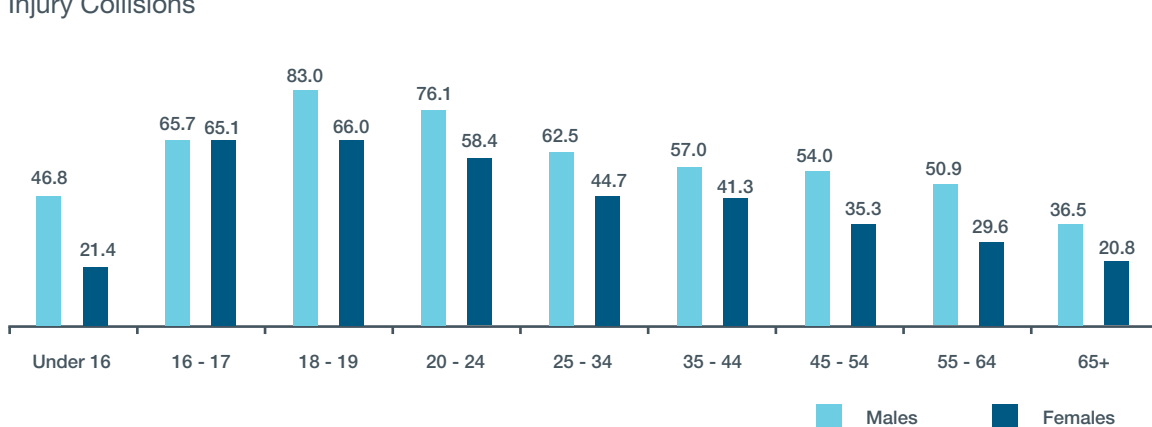
Of these crashes, **6%** resulted in human casualties

Involvement Rates per 10,000 Licensed Drivers

Fatal Collisions



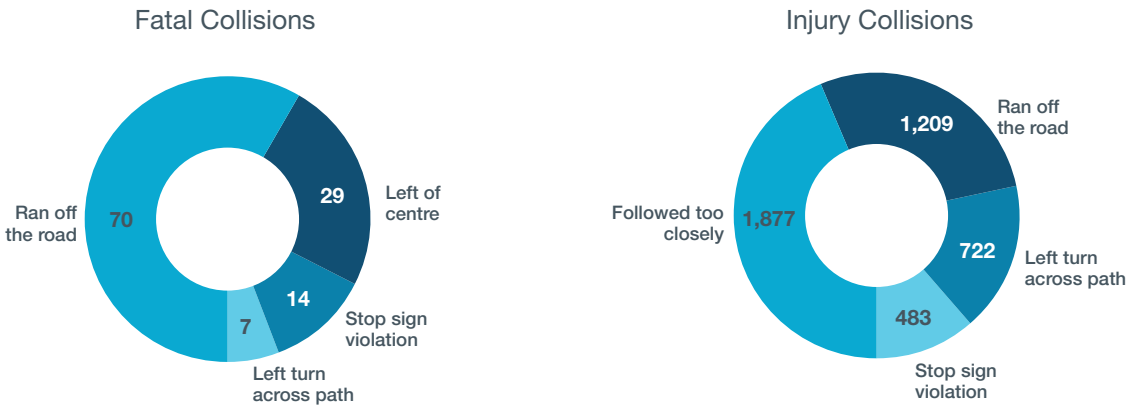
Injury Collisions





Drivers

Most Common Driver Errors

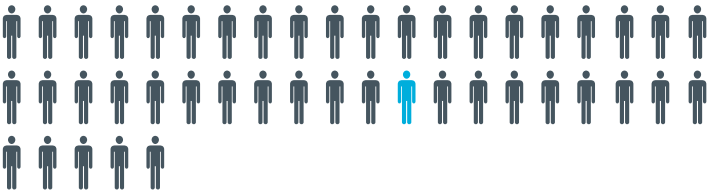


Impaired Drivers

1 in 8 drivers in fatal collisions was legally impaired (12.7%)



1 in 45 drivers in injury collisions was legally impaired (12.7%)



330 legally impaired drivers in fatal and injury crashes



Road users sustained

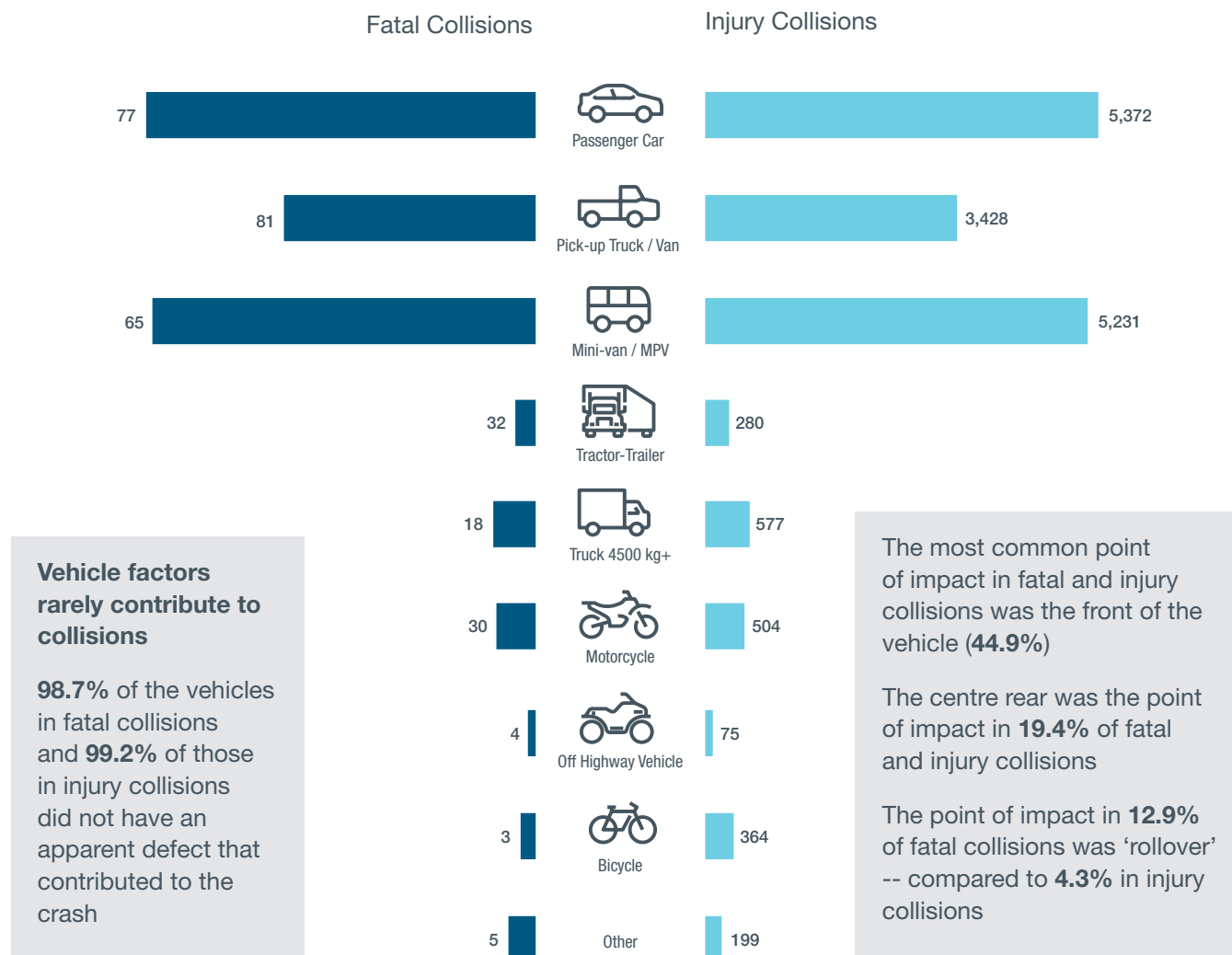


Involvement rates per 1,000 licensed drivers show that:

Males aged 20 to 24 were most likely to have been legally impaired

Almost three times **more males than females** were legally impaired

Vehicles



Visit alberta.ca/collision-vehicle-licence-statistics.aspx for more information on motor vehicle collisions in Alberta

*Visit transportation.alberta.ca/Content/docType48/Production/Seat_Belt_Use_2006-2017.pdf for more information on seatbelt wearing rates in Alberta.

Note: The information presented in this fact sheet is based on those cases where the respective information was specified on the Alberta Collision Report Form. For more information on the categories presented in this report and motor vehicle collisions in Alberta, please refer to the annual Alberta Traffic Collision Statistics report, available at the above website.

