

---

# Alberta traffic collision facts 2021

[alberta.ca/collision-vehicle-licence-statistics.aspx](https://alberta.ca/collision-vehicle-licence-statistics.aspx)



## Collision facts

Total Number of Collisions	
Fatal	233
Injury	10,022
PDO	89,976
<b>Total</b>	<b>100,231</b>

PDO means 'Property Damage Only';  
in other words, nobody was hurt

Total Number of Casualties	
Fatalities	254
Major Injuries	2,204
Minor Injuries	10,893
<b>Total</b>	<b>13,351</b>

Urban	Rural
Fatal Collisions	
27%	73%
Injury Collisions	
73%	27%
PDO Collisions	
84%	16%

Total Collisions - Day of Week

Monday	13,901
Tuesday	14,791
Wednesday	15,718
Thursday	16,201
Friday	17,097
Saturday	12,141
Sunday	10,382

Total Collisions - Time Period

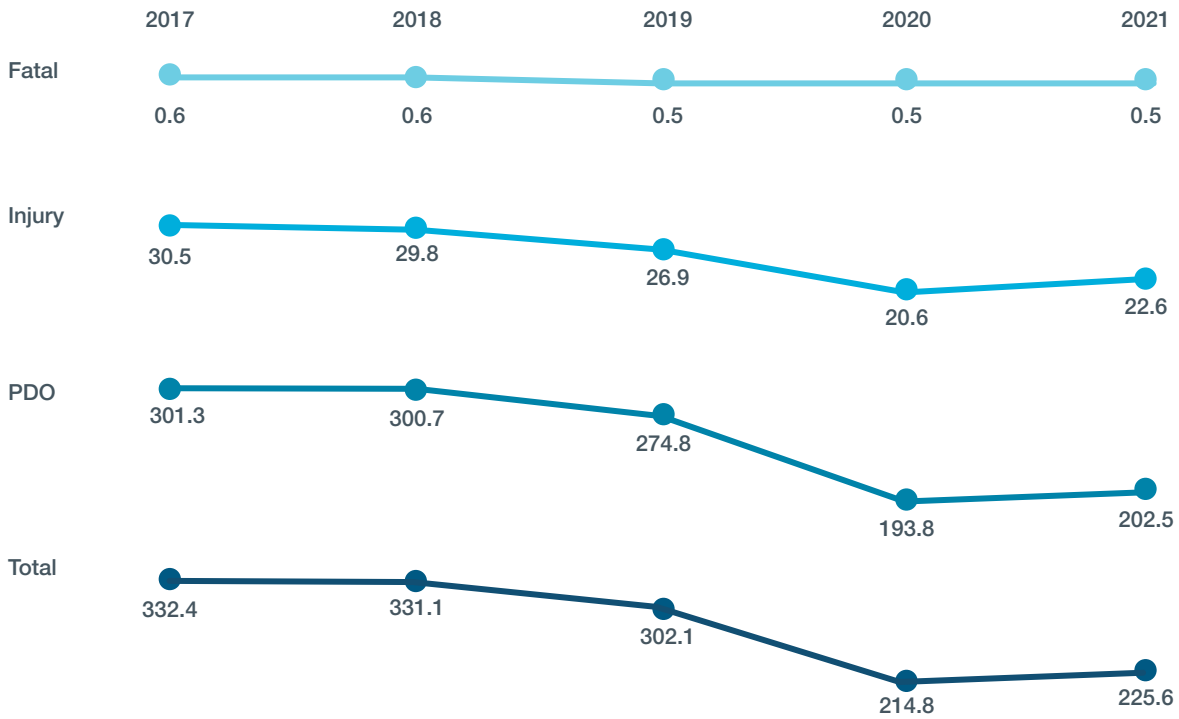
3:00 a.m. - 6:59 a.m.	5,290
7:00 a.m. - 10:59 a.m.	16,933
11:00 a.m. - 2:59 p.m.	25,620
3:00 p.m. - 6:59 p.m.	30,010
7:00 p.m. - 10:59 p.m.	13,288
11:00 p.m. - 2:59 a.m.	4,235

Month of Collision Occurrence

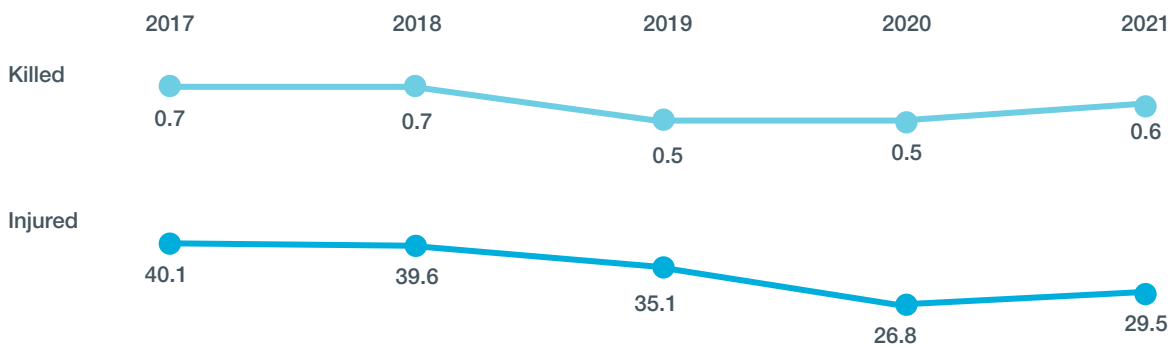
	Jan	Feb	Mar	Apr	May	Jun	Jul	Aug	Sep	Oct	Nov	Dec
Fatal	17	10	12	13	16	21	31	28	21	22	26	16
Injury	646	703	648	612	633	954	904	910	1,021	890	970	1,131
PDO	6,255	7,924	5,814	5,122	5,285	7,317	7,076	6,886	7,716	7,986	9,597	12,998

## Rates

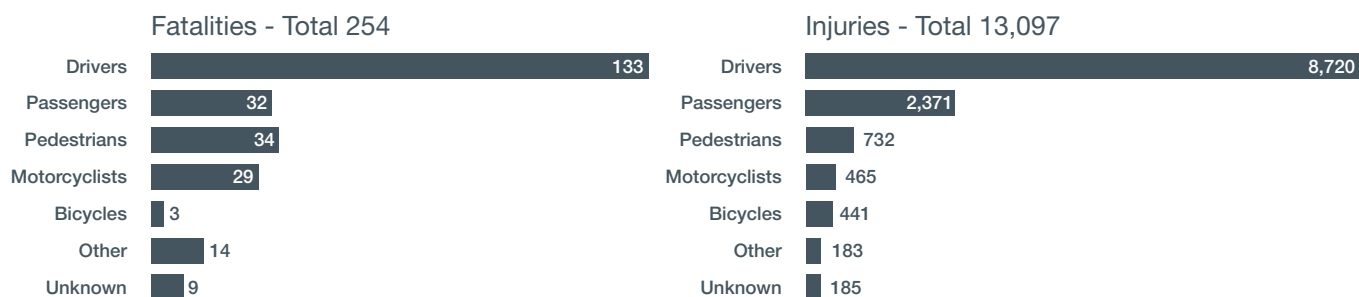
Collision Rates per 10,000 Population



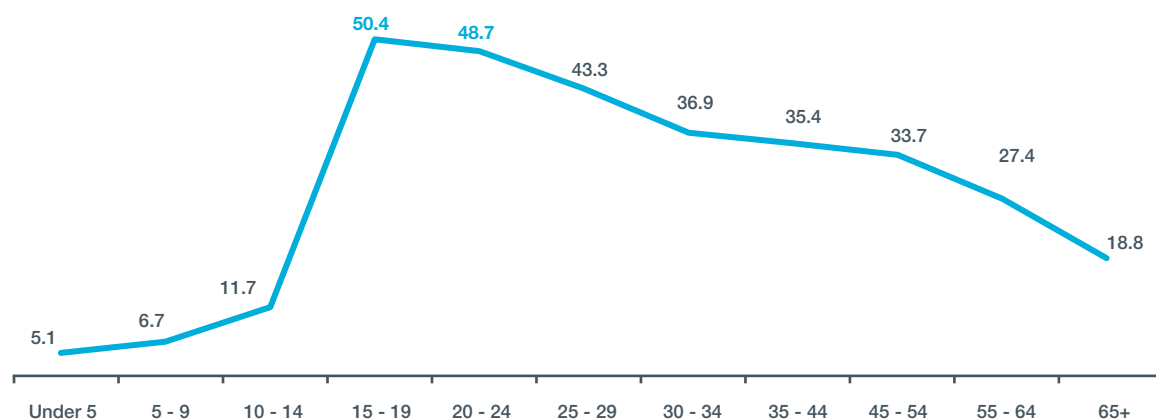
Casualty Rates per 10,000 Population



## Victims



Casualty Rate per 10,000 Population by Age



The Alberta seat belt wearing rate was **97.4%** in 2017\*

Seatbelt users had a much lower injury rate (**7.4%**) than those not using seatbelts (**14.5%**)

### Did not use a seatbelt



### Used a seatbelt



## Drivers



**79.5%** of total collisions involved at least one driver who committed a driving error

The crash factors that lead to deaths and injuries include things like speeding, 'tailgating' and impaired driving



### Speeding Increases Collision Severity

1 in 4 drivers in fatal collisions (**26.4%**) and 1 in 13 drivers in injury crashes (**7.6%**) were driving at an unsafe speed

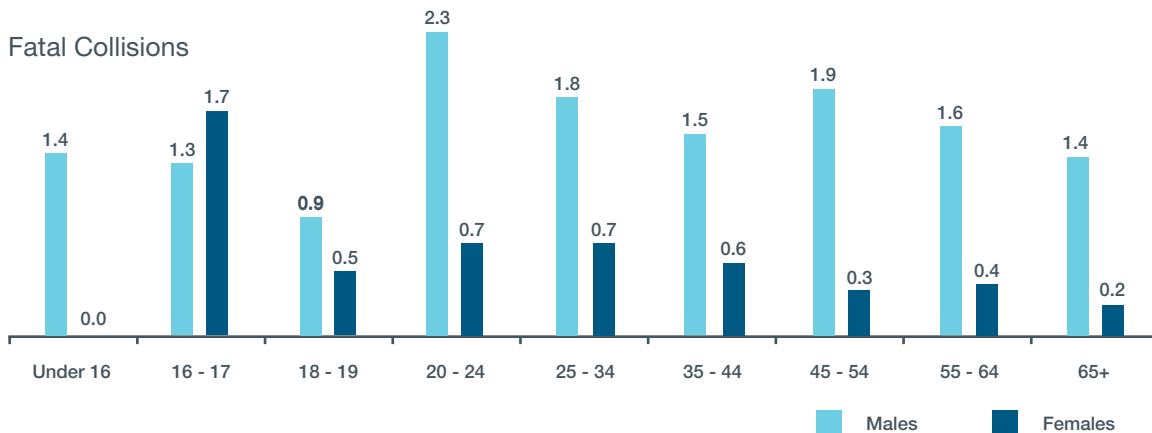


**60%** of crashes on rural highways involved an animal

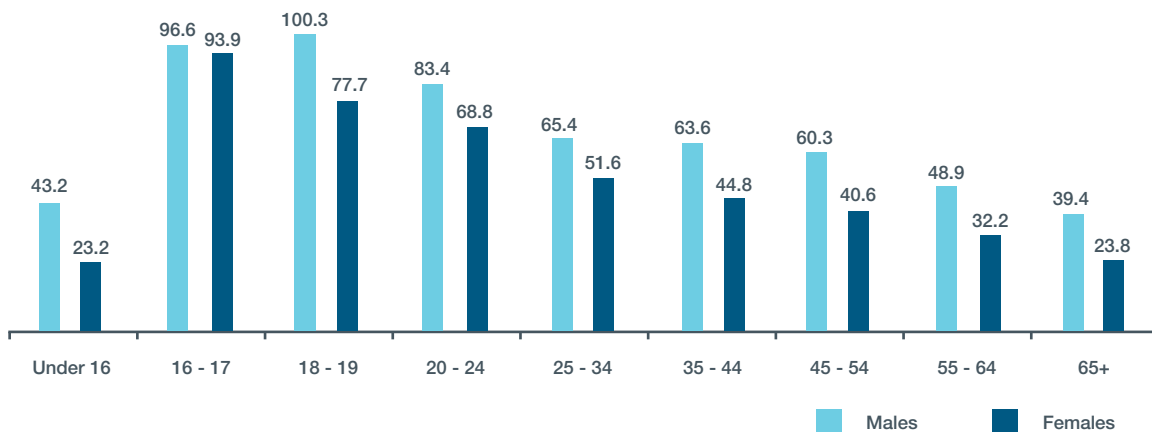
Of these crashes, **6%** resulted in human casualties

### Involvement Rates per 10,000 Licensed Drivers

#### Fatal Collisions



#### Injury Collisions





# Drivers

## Most Common Driver Errors

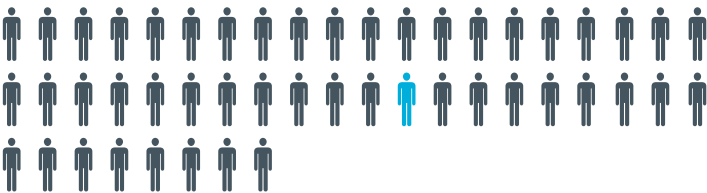


## Impaired Drivers

1 in 13 drivers in fatal collisions was legally impaired (7.6%)



1 in 48 drivers in injury collisions was legally impaired (2.1%)



339 legally impaired drivers in fatal and injury crashes



Road users sustained

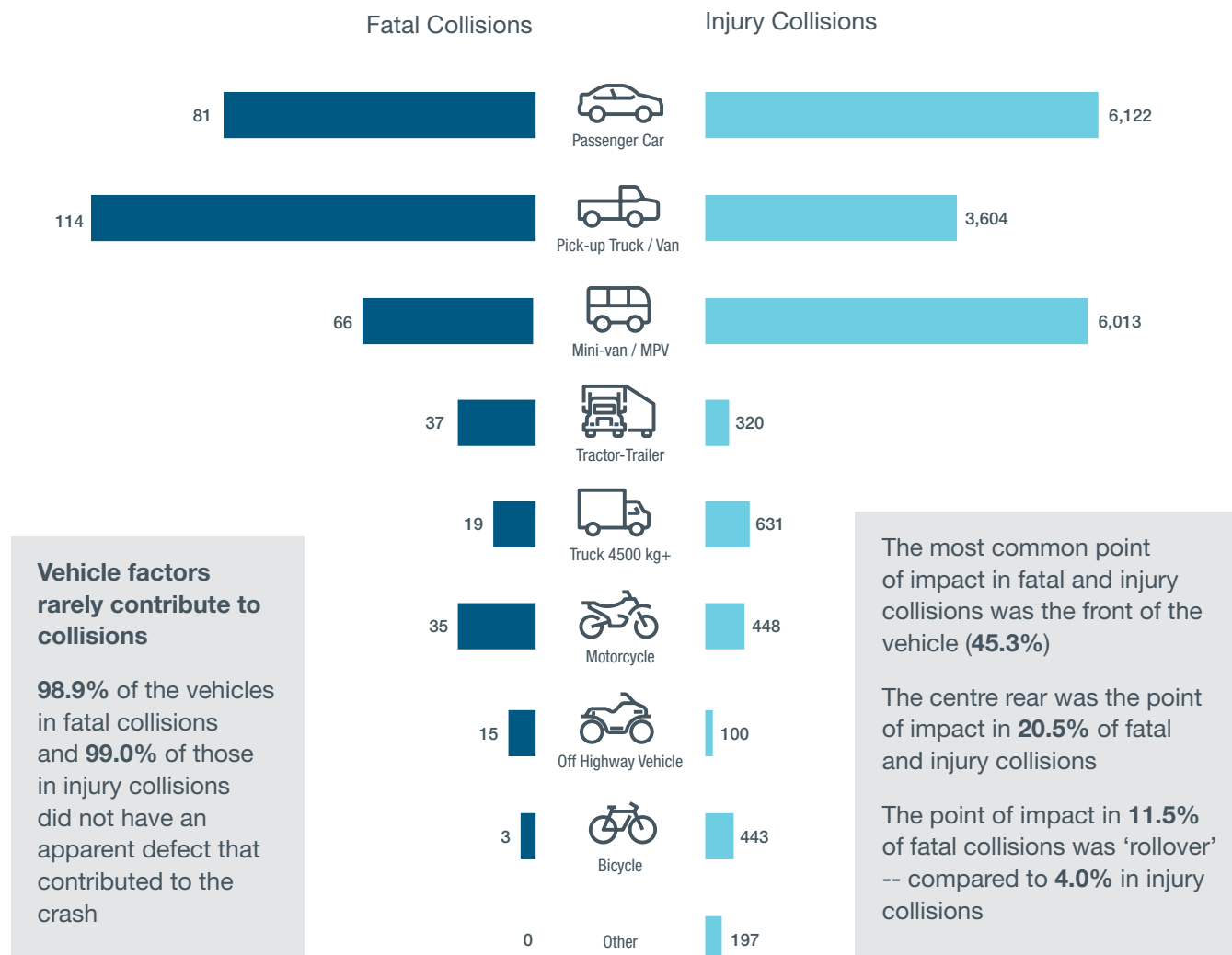


Involvement rates per 1,000 licensed drivers show that:

**Males** aged **20 to 21** were most likely to have been legally impaired

Almost three **times** more males than females were legally impaired

## Vehicles



Visit [alberta.ca/collision-vehicle-licence-statistics.aspx](https://alberta.ca/collision-vehicle-licence-statistics.aspx) for more information on motor vehicle collisions in Alberta

\*Visit [transportation.alberta.ca/Content/docType48/Production/Seat\\_Belt\\_Use\\_2006-2017.pdf](https://transportation.alberta.ca/Content/docType48/Production/Seat_Belt_Use_2006-2017.pdf) for more information on seatbelt wearing rates in Alberta.

Note: The information presented in this fact sheet is based on those cases where the respective information was specified on the Alberta Collision Report Form. For more information on the categories presented in this report and motor vehicle collisions in Alberta, please refer to the annual Alberta Traffic Collision Statistics report, available at the above website.

