



Alberta Farm Input Prices



Average Monthly Prices for November 2014

Farm Input Prices - Dollars (\$)	November 2013	October 2014	November 2014
Construction Grade Lumber, 2x6, spruce, M	506.63	550.58	553.68
Rough Grade Lumber, 2x8, spruce, M	569.56	560.41	551.64
Sheathing, plywood, spruce, unsanded, 9.6 mm, 4'x8' sheet	15.92	17.33	17.84
Fence Posts, standard grade, treated, 3-4" diameter, 7' length	4.38	5.01	5.10
Ready-Mix Concrete, 20 mpa strength, cubic metre	211.27	218.41	223.62
Nails, standard grade, 4" spiral, 50 lb box	74.86	73.67	73.02
Pipe, plastic, 1" diameter, 75 psi, 100' coil	55.00	57.66	57.22
Rods, steel reinforcing, 10 mm, 6 metre length	6.32	6.28	6.28
Barbed Wire, 12 gauge, double strand, 40 kg, 80 rod spool	66.15	66.06	66.69
Grain Bin, hopper bottom included, 4,000 bushel capacity, each *	14,111.66	15,109.36	15,362.41
Truck Tires, 1st line, blackwall, LT285-70R-17 Radial (environmental tax included), each	287.96	292.29	295.36
Storage Battery, 12 volt, 24 series, 525 cranking amps, each	98.22	98.35	100.16
V-Belt - Implement, 1/2" x 70", fibre, each	12.86	12.95	13.43
Antifreeze, ethylene glycol, anti-corrosion, 4 litre	14.97	15.21	15.15
Mechanical Repairs, for farm machinery, shop & labour, per hour	108.58	116.91	117.14
Baler Twine, plastic, for round baler, 28,000' bale	31.59	31.52	31.97
General Farm Labour, full-time, without board, per month	3,029.71	3,261.50	3,199.00
Tractor, FWD, 105-130 hp, 6 cylinder diesel, 12-24 speed transmission, new, each	111,547.04	117,617.95	118,061.99
Tractor, 4WD, 325-375 hp, 6-8 cylinder diesel, 12-18 speed transmission, new, each	280,686.85	300,563.95	305,560.46
Combine, self-prop, diesel, Class 7, 323-374 hp, new, each *	352,624.45	380,387.44	378,005.30
Air Drill, 40-42', 3 compartment tank, no variable rate, new, each *	197,511.38	240,702.12	242,019.57
Sprayer, pull-type, 800-900 gallon tank, 90-100' boom, new, each	56,612.66	63,651.25	63,973.94
Round Baler, pull-type, P.T.O. driven, 5'x6' hard core bale, new, each	45,485.68	50,132.54	49,386.56
Double Disc, heavy-duty tandem, 19-21', 22" blades, new, each	44,297.28	48,668.70	48,245.78
3/4 Ton Truck, V-8, 5.4L or 5.9L engine, 4X4, 4 speed automatic transmission, new, each	39,548.62	41,190.23	40,940.23
Calf-starter Ration, pellets, 13-20%, bagged, 25 kg *	14.84	14.15	14.14
Dairy Supplement, pellets, 32%, bagged, 25 kg *	19.67	18.86	18.77
Feedlot Supplement, pellets, 32%, (excl. Ionophore), bagged, 25 kg *	13.84	14.66	15.06
Hog Grower Ration, pellets, 15-17%, bagged, 25 kg *	13.55	14.83	15.02
Swine Supplement, pellets, 35-40%, bagged, 25 kg *	21.38	20.25	20.27
Broiler Grower Complete Feed, 18-20%, bagged, 25 kg *	13.70	15.90	16.57
Cattle Mineral, salt-free, 18% Phosphorus & 18% Calcium, 20 kg *	27.60	28.53	28.68
Feed Barley, No. 1, non-board, farm gate, bushel	3.86	3.21	3.47
Feed Wheat, No. 1, non-board, farm gate, bushel	5.08	4.35	4.32
Feed Oats, good quality, farm gate, bushel **	2.64	2.50	2.53
Hay, good quality, over 50% Alfalfa, farm gate, ton	73.00	85.38	89.61
Fertilizer, 46-0-0, Urea, bulk, tonne	538.14	591.41	572.32
Fertilizer, 11-51-0, bulk, tonne	659.86	768.14	763.18
Fertilizer, 82-0-0, Anhydrous Ammonia, full service with applicator, bulk, tonne	913.76	990.28	965.94
Refine SG granular, 486 gram *	268.47	275.29	274.03
Assert 300 SC, liquid, 10.8 litre	249.16	224.45	225.14
Roundup WeatherMAX, liquid, 10 litre	64.44	73.99	72.47
Penicillin, Procaine Penicillin G, injectable, short-acting, 300 mg/ml, 250 ml	16.56	20.07	20.13
Vitamin AD with E, injectable, IU/cc: A:500,000 D:75,000 E:50, 250 ml	26.52	26.96	26.82
Seed, Wheat, Certified No. 1, bulk, 100 kg	54.65	49.87	50.85
Seed, Barley, Certified No. 1, bulk, 100 kg	42.94	39.45	38.88
Seed, Roundup Ready HT Canola, Certified No. 1, treated, bagged, 22.7 kg **	465.40	474.26	469.37
Seed, Liberty Link HT Canola, Certified No. 1, treated, bagged, 22.7 kg **	566.02	599.57	595.38
Purple Gasoline, regular unleaded, marked farm fuel, 100 litres	99.23	100.75	92.73
Diesel Fuel, marked farm fuel, (provincial allowance deducted), 100 litres	106.19	103.49	108.59
Propane, liquefied, bulk, 100 litres	54.58	68.52	70.32
Natural Gas, (excluding service or delivery charge, prov. rebate deducted where applicable), GJ	3.64	4.27	3.81
Electricity, farm use, (excluding service or delivery charge), 100 kwh	8.30	8.52	6.67
Oil, for diesel engines, 15W-40, (environmental tax included), 5 litre *	20.45	20.42	20.75

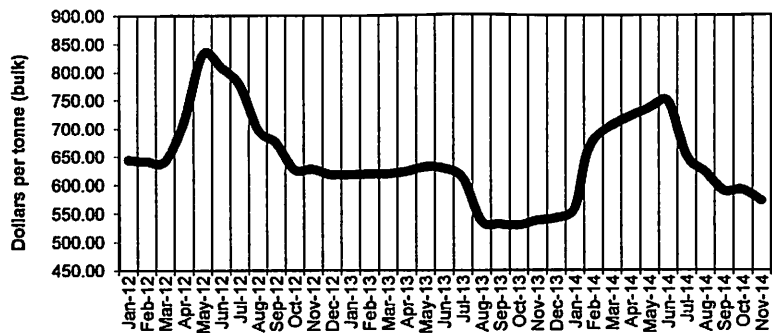
All agricultural inputs were reported to be in good supply for the month of November 2014 with the exception of general farm labour in some areas of the province. The prices reported are simple averages for the province in Canadian Dollars (\$), and are based on a survey conducted in the first week of each month.

* Specification changed as of January 2012 ** New input as of January 2012

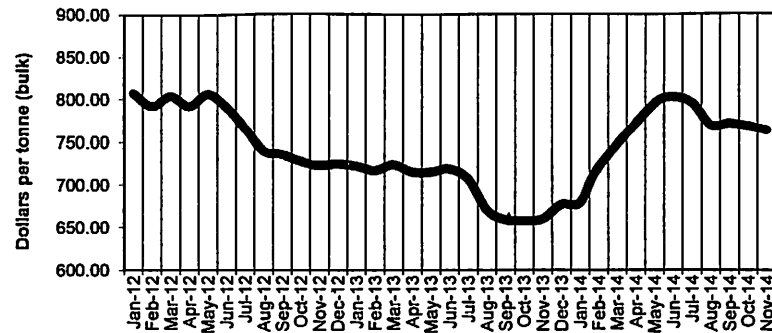
Source: Alberta Agriculture and Rural Development, Economics and Competitiveness Division, Statistics and Data Development Branch, in partnership with Alberta Federation of Agriculture. For additional information, please phone: 780-427-4011.

Note to Users: The contents of this document may not be used or reproduced without properly accrediting Alberta Agriculture and Rural Development, Economics and Competitiveness Division, Statistics and Data Development Branch.

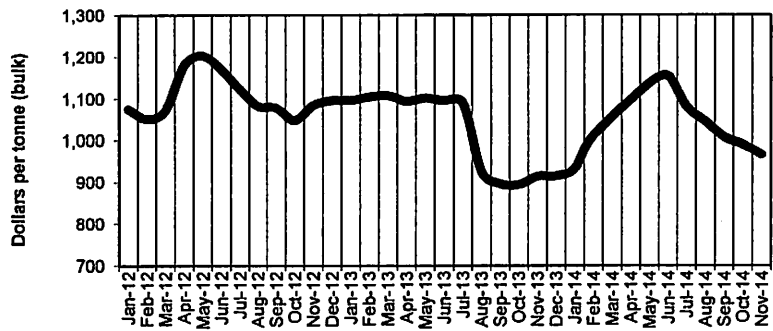
**FERTILIZER, 46-0-0
Alberta, Monthly 2012 - 2014**



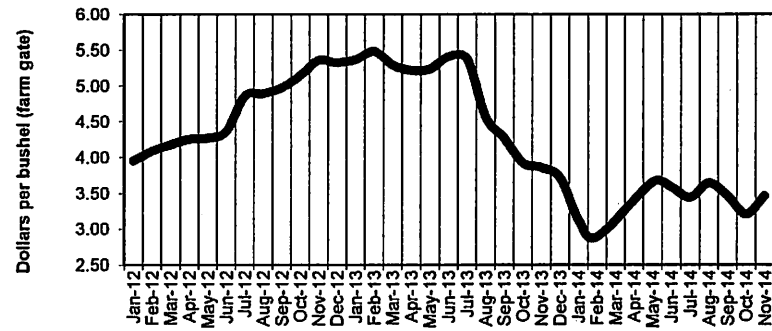
**FERTILIZER, 11-51-0
Alberta, Monthly 2012 - 2014**



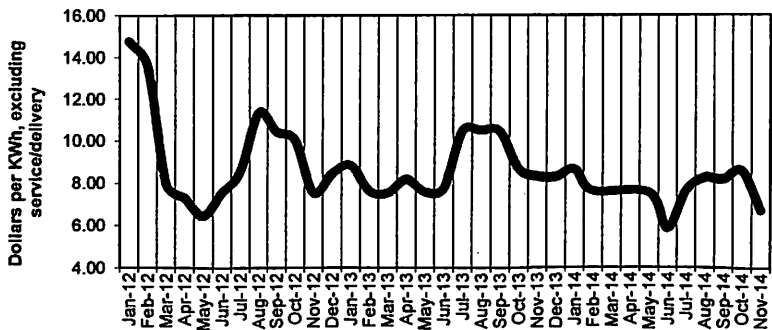
**FERTILIZER, 82-0-0
Alberta, Monthly 2012 - 2014**



**FEED BARLEY, NO. 1, NON-BOARD
Alberta, Monthly 2012 - 2014**



**ELECTRICITY, FARM USE
Alberta, Monthly 2012 - 2014**



**FEED WHEAT, NO. 1, NON-BOARD
Alberta, Monthly 2012 - 2014**

