

The Bighorn Backcountry is managed to ensure protection of the environment, while allowing responsible recreation use. It is your responsibility to know what, where and when activities are permitted in the area. For additional details, refer to the Bighorn Backcountry brochure.

History of Coliseum Mountain

Coliseum Mountain was the location of the first mountain fire lookout in Alberta. In 1927, the fire lookout was constructed of lumber that was hauled by packhorses to the mountain peak.

The name of Coliseum Mountain refers to the rocky amphitheatre on its southwest aspect, a natural feature reminiscent of the coliseums of ancient Rome. The First Nations name for this peak translates to “mountain with a cap” referring to the summit knoll.



Packing lumber for construction of Coliseum Fire Lookout, 1927

All trails in the Coliseum Area are non-motorized.

Different non-motorized users may be on this trail at the same time. Some portions of this trail were developed by volunteers.

By being responsible and obeying regulations, you will be respecting the efforts that volunteers have invested in providing you with this opportunity.

Everyone has a stewardship role to play. If you see volunteers working on a trail, stop and lend a helping hand.

Some areas or sections of trail may be closed due to environmental and safety concerns. You are required to obey all posted signs and notices, and keep the area in a clean and tidy condition. Remember, continued access to this trail depends on the actions of those who use it.

No matter how you enjoy Alberta's public lands, your presence has an impact. **Stay on the designated trail at all times.**

Do not shortcut or trail braid. Shortcutting and trail braiding can result in soil erosion and deep ruts.

Geocaching – There are multiple geocache sites located within the Bighorn Backcountry. Geocaching is an outdoor treasure hunting game using GPS-enabled devices. Participants navigate to a set of GPS coordinates and then attempt to locate a geocache container hidden at that location. To find various sites visit www.geocaching.com.



Soil erosion on the left side of the trail, due to water channelling

Emergency Contacts

9-1-1 in case of emergency.

Cellular phone service may or may not be available in this area.

1-866-FYI-FIRE (1-866-394-3473) for fire ban information or visit www.albertafirebans.ca.

310-FIRE (310-3473) to report a wildfire. For daily fire hazard information, fire weather forecasts and fire situation reports, visit www.wildfire.alberta.ca.

1-800-642-3800 for Report-A-Poacher hunting and fishing violations.

1-800-222-6514 for Environmental Spill & Incident Reporting.



Scanning this QR code will take you directly to the Bighorn Backcountry website for new digital mapping options and downloads.

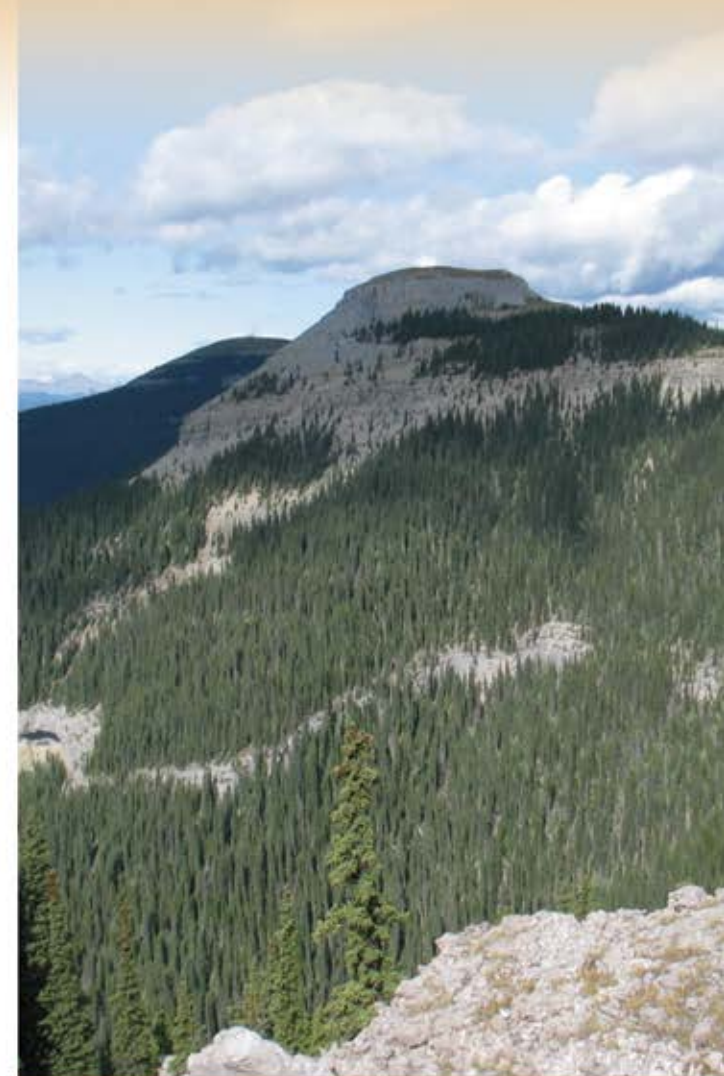


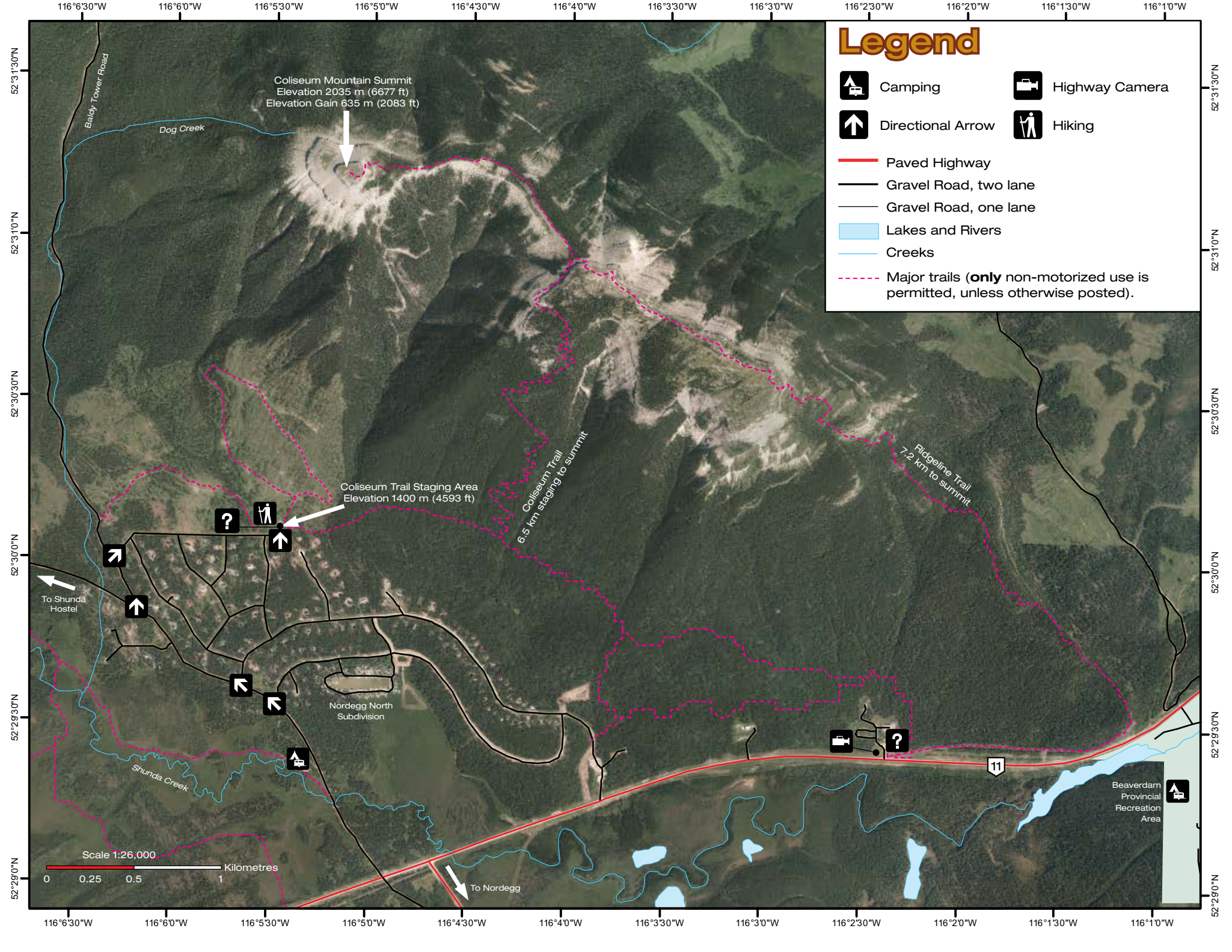
ISBN No. 978-1-4601-2822-0 (Printed Version)
978-1-4601-2823-7 (Online Version)

Revised March 2016

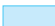

Bighorn Backcountry

Coliseum Area





Legend

	Camping		Highway Camera
	Directional Arrow		Hiking
	Paved Highway		Gravel Road, two lane
	Gravel Road, one lane		Lakes and Rivers
	Creeks		Major trails (only non-motorized use is permitted, unless otherwise posted).

Coliseum Mountain Summit
 Elevation 2035 m (6677 ft)
 Elevation Gain 635 m (2083 ft)

Coliseum Trail Staging Area
 Elevation 1400 m (4593 ft)

Coliseum Trail
 6.5 km staging to summit

Ridgeline Trail
 7.2 km to summit

Nordegg North Subdivision

Beaverdam Provincial Recreation Area

