



# Alberta Farm Input Prices



## Average Monthly Prices for December 2019

Farm Input Prices - Dollars (\$)	December 2018	November 2019	December 2019
Construction Grade Lumber, 2x6, spruce, M	975.84	934.42	872.77
Rough Grade Lumber, 2x8, spruce, M	1,081.79	1,123.02	984.74
Sheathing, plywood, spruce, unsanded, 9.6 mm, 4'x8' sheet	22.28	22.32	22.60
Fence Posts, standard grade, treated, 3-4" diameter, 7' length	6.63	6.79	7.08
Ready-Mix Concrete, 20 mpa strength, cubic metre	245.52	254.53	261.13
Nails, standard grade, 4" spiral, 50 lb box	83.70	91.31	93.29
Pipe, plastic, 1" diameter, 75 psi, 100' coil	63.52	63.14	64.69
Rods, steel reinforcing, 10 mm, 6 metre length	7.58	8.40	8.59
Barbed Wire, 12 gauge, double strand, 40 kg, 80 rod spool	71.89	77.53	79.26
Grain Bin, hopper bottom included, 4,000 bushel capacity, each *	17,601.32	18,638.18	18,902.96
Truck Tires, 1st line, blackwall, LT285-70R-17 Radial (environmental tax included), each	318.67	307.81	310.69
Storage Battery, 12 volt, 24 series, 525 cranking amps, each	117.81	122.00	121.09
V-Belt - Implement, 1/2" x 70", fibre, each	16.58	17.43	18.02
Antifreeze, ethylene glycol, anti-corrosion, 4 litre	17.27	18.68	18.81
Mechanical Repairs, for farm machinery, shop & labour, per hour	133.36	141.96	141.37
Baler Twine, plastic, for round baler, 28,000' bale	33.95	36.00	36.27
General Farm Labour, full-time, without board, per month	3,700.54	3,909.58	3,900.49
Tractor, FWD, 105-130 hp, 6 cylinder diesel, 12-24 speed transmission, new, each	159,741.07	177,084.77	177,571.60
Tractor, 4WD, 325-375 hp, 6-8 cylinder diesel, 12-18 speed transmission, new, each	402,608.83	417,080.83	419,966.62
Combine, self-prop, diesel, Class 7, 323-374 hp, new, each *	514,999.53	533,085.29	534,701.88
Air Drill, 40-42', 3 compartment tank, no variable rate, new, each *	326,903.45	330,840.01	337,917.92
Sprayer, pull-type, 800-900 gallon tank, 90-100' boom, new, each	76,787.91	81,121.91	90,392.50
Round Baler, pull-type, P.T.O. driven, 5'x6' hard core bale, new, each	64,514.32	68,038.28	66,473.15
Double Disc, heavy-duty tandem, 19-21', 22" blades, new, each	65,855.28	68,891.33	71,636.46
3/4 Ton Truck, V-8, 5.4L or 5.9L engine, 4X4, 4 speed automatic transmission, new, each	52,778.08	54,189.64	54,551.05
Calf-starter Ration, pellets, 13-20%, bagged, 25 kg *	16.32	17.46	18.10
Dairy Supplement, pellets, 32%, bagged, 25 kg *	20.65	22.61	22.46
Feedlot Supplement, pellets, 32%, (excl. Ionophore), bagged, 25 kg *	16.48	17.02	17.21
Hog Grower Ration, pellets, 15-17%, bagged, 25 kg *	16.04	16.69	17.02
Swine Supplement, pellets, 35-40%, bagged, 25 kg *	21.77	22.32	22.63
Broiler Grower Complete Feed, 18-20%, bagged, 25 kg *	16.66	17.24	17.43
Cattle Mineral, salt-free, 18% Phosphorus & 18% Calcium, 20 kg *	29.83	31.87	32.97
Feed Barley, No. 1, non-board, farm gate, bushel	4.46	4.83	4.81
Feed Wheat, No. 1, non-board, farm gate, bushel	5.41	5.48	5.42
Feed Oats, good quality, farm gate, bushel **	2.88	3.18	3.17
Hay, good quality, over 50% Alfalfa, farm gate, ton	150.92	167.38	168.64
Fertilizer, 46-0-0, Urea, bulk, tonne	551.89	533.93	536.72
Fertilizer, 11-51-0, bulk, tonne	754.85	754.89	698.85
Fertilizer, 82-0-0, Anhydrous Ammonia, full service with applicator, bulk, tonne	859.55	878.31	888.16
Refine SG granular, 486 gram *	284.17	298.62	300.41
Assert 300 SC, liquid, 10.8 litre	237.13	239.44	244.44
Roundup WeatherMAX, liquid, 10 litre	82.75	87.27	87.86
Penicillin, Procaine Penicillin G, injectable, short-acting, 300 mg/ml, 250 ml	22.04	24.57	26.73
Vitamin A, D and E, injectable, IU/cc: A:500,000 D:75,000 E:50, 250 ml	34.38	40.90	41.86
Seed, Wheat, Certified No. 1, bulk, 100 kg	57.78	60.66	60.64
Seed, Barley, Certified No. 1, bulk, 100 kg	41.55	43.22	43.45
Seed, Roundup Ready HT Canola, Certified No. 1, treated, bagged, 22.7 kg **	568.31	618.97	623.16
Seed, Liberty Link HT Canola, Certified No. 1, treated, bagged, 22.7 kg **	665.27	708.22	716.09
Purple Gasoline, regular unleaded, marked farm fuel, 100 litres	97.53	90.53	91.71
Diesel Fuel, marked farm fuel, (provincial allowance deducted), 100 litres	104.73	97.34	98.59
Propane, liquefied, bulk, 100 litres	66.27	69.04	70.41
Natural Gas, (excluding service or delivery charge, prov. rebate deducted where applicable), GJ	2.06	2.59	3.05
Electricity, farm use, (excluding service or delivery charge), 100 kwh	6.22	6.28	6.69
Oil, for diesel engines, 15W-40, (environmental tax included), 5 litre *	22.64	24.15	24.29

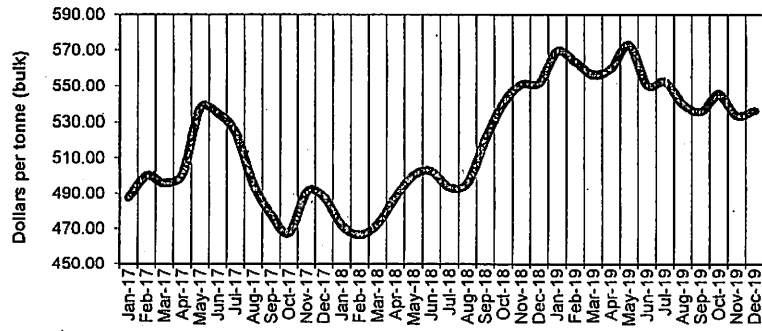
All agricultural inputs were reported to be in good supply for the month of December 2019 with the exception of general farm labour in some areas of the province. The prices reported are simple averages for the province in Canadian Dollars (\$), and are based on a survey conducted in the first week of each month.

\* Specification changed as of January 2012 \*\* New input as of January 2012

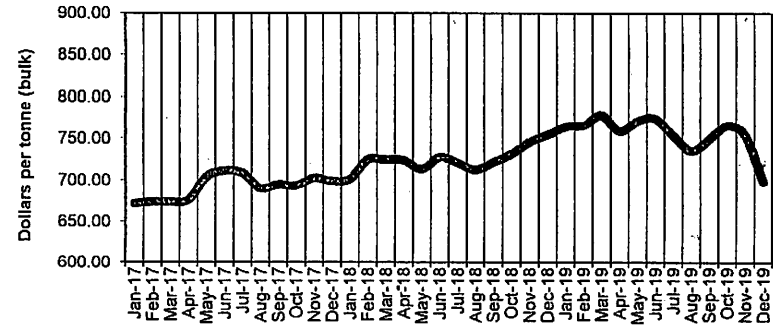
Source: Alberta Agriculture and Forestry, Economics and Competitiveness Branch, Statistics and Data Development Section, in partnership with Alberta Federation of Agriculture. For additional information, please phone: 780-644-1308.

Note to Users: The contents of this document may not be used or reproduced without properly accrediting Alberta Agriculture and Forestry, Economics and Competitiveness Branch, Statistics and Data Development Section.

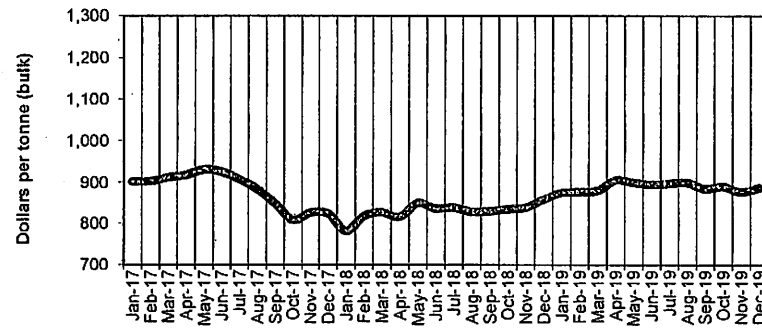
**FERTILIZER, 46-0-0**  
Alberta, Monthly 2017 - 2019



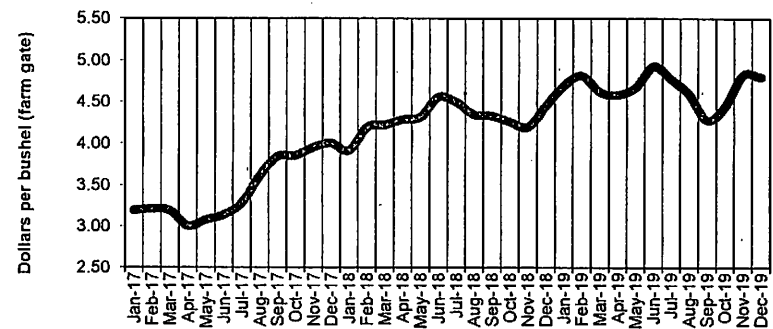
**FERTILIZER, 11-51-0**  
Alberta, Monthly 2017 - 2019



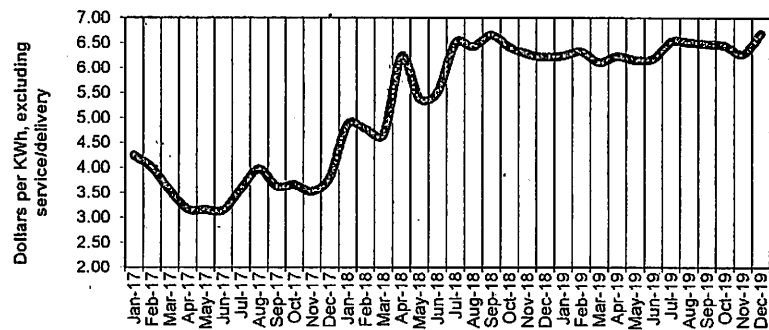
**FERTILIZER, 82-0-0**  
Alberta, Monthly 2017 - 2019



**FEED BARLEY, NO. 1, NON-BOARD**  
Alberta, Monthly 2017 - 2019



**ELECTRICITY, FARM USE**  
Alberta, Monthly 2017 - 2019



**FEED WHEAT, NO. 1, NON-BOARD**  
Alberta, Monthly 2017 - 2019

