

BUDGET 2022

GOVERNMENT OF ALBERTA | 2022-25

Ministry Business Plan Advanced Education

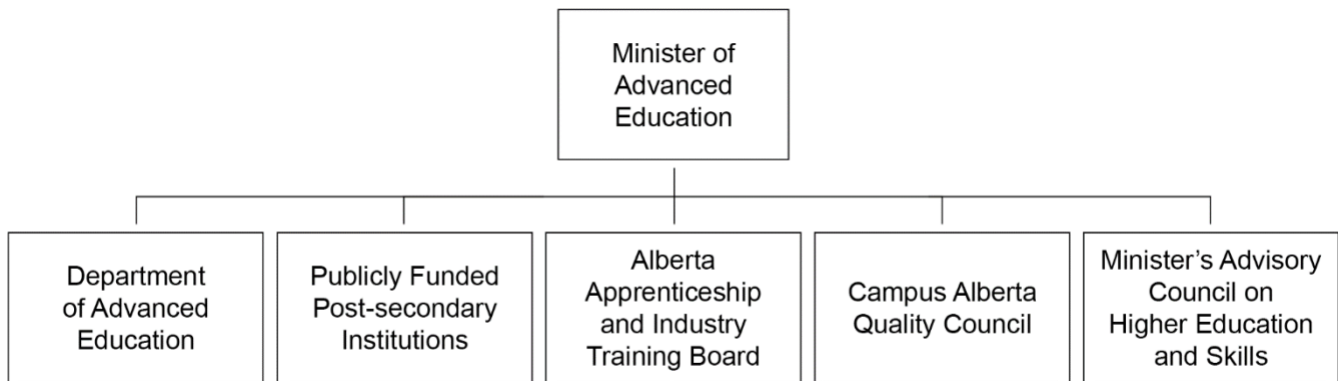
Advanced Education

Business Plan 2022-25

Ministry Fact Sheet – Mandate and Structure

Advanced Education supports Albertans by providing the education and training opportunities they need to prepare for the workforce. The Ministry works closely with post-secondary institutions, private post-secondary providers, and community learning providers to support adult learning, provide learning opportunities, and enhance the adult learning system, and collaborates with partner ministries on initiatives to encourage economic recovery. It also supports the delivery of apprenticeship education that meets the needs of apprentices and industry, provides financial supports to help students supplement their investment in post-secondary education, and supports adult Albertans' access to foundational learning opportunities that will prepare them for further education, training, and employment. Guided by the Alberta 2030: Building Skills for Jobs strategy, Advanced Education's investments in people, infrastructure and research capacity support the post-secondary sector to drive job creation, innovation, and the development of skilled and adaptive workers who contribute to a competitive Alberta economy.

The Ministry of Advanced Education consists of:



A more detailed description of Advanced Education and its programs and initiatives can be found at:

<https://www.alberta.ca/advanced-education.aspx>

The Ministry of Advanced Education continues to review programs to ensure Albertans receive efficient and client-focused services from their government. As part of this ongoing review, the ministry is committed to protecting and supporting Albertans and job creators by reducing red tape by one-third by 2023, modernizing regulations, eliminating unnecessary regulatory requirements, and reducing administrative burden through more efficient processes including digital solutions.

Ministry business plans should be considered in conjunction with all budget documents - including the Fiscal Plan, Government Strategic Plan, and Estimates - which work together to provide a complete overview of government's commitment to responsible fiscal management.

Business Plan – Core

Outcome 1

Albertans have the education and skills required to secure rewarding careers in the current and future labour market, and to drive Alberta’s recovery and prosperity

Through high-quality post-secondary education, including expanded and strengthened apprenticeship opportunities, Albertans build the knowledge, skills and competencies needed for well-paying careers that contribute to economic recovery, growth and diversification. Advanced Education is committed to working with employers, learning providers and other stakeholders to ensure Albertans have the lifelong skills, knowledge and competencies they need to excel.

Key Objectives

- 1.1 Implement initiatives under the Alberta 2030: Building Skills for Jobs strategy to transform the adult learning system to focus on providing the high quality education, skills and training needed for Alberta’s future.
- 1.2 Strengthen the alignment of post-secondary programs to employment and expand innovative learning opportunities to meet Albertans’ skills development needs and support labour market demands.
- 1.3 Implement the recommendations of the Skills for Jobs Task Force, including the *Skilled Trades and Apprenticeship Education Act*, to create a modern, flexible and efficient skilled trades and apprenticeship system in Alberta.
- 1.4 Ensure that government’s investments in student financial supports are responsive to the post-secondary education, skills, and training needs of Albertans to enable participation in the labour market.

Initiatives Supporting Key Objectives

- Under the Alberta at Work initiative, Advanced Education will invest \$235 million in funding over three years to targeted programs to address labour market needs and enrolment pressures.
- In 2022-23, government will allocate \$168 million in student aid through scholarships, grants and awards, as well as \$980 million through student loans, to help all Albertans benefit from adult learning opportunities.

Performance Metrics

1.a **Performance Indicator: Percentage of post-secondary graduates who report being employed approximately two years after graduation** (This metric describes the employment rate of recent post-secondary graduates who are in the labour force and not enrolled as full-time students. Results are collected from a biennial survey of graduates from publicly funded post-secondary institutions in Alberta.)

| 2012 | 2014 | 2016 | 2018 | 2020 |
|------|------|------|------|------|
| 96% | 94% | 92% | 93% | 93% |

1.b **Performance Indicator: Percentage of apprentices who report being employed between five and 18 months after graduation.** (This metric describes the proportion of recent apprenticeship graduates in the labour force who are employed. Results are collected from a biennial survey of apprenticeship graduates in Alberta. In 2015 the survey was delayed by one year to 2016 in order to conduct a full review of the survey.)

| 2011 | 2013 | 2016 | 2018 | 2020 |
|------|------|------|------|------|
| 95% | 96% | 88% | 87% | 90% |

Outcome 2

Alberta’s adult learning system is efficient, financially sustainable and globally competitive

Alberta taxpayers make a significant investment in Alberta’s post-secondary system and expect it to be responsible and accountable for value of investment. Advanced Education will work with the post-secondary system to drive transformation, focusing on cost and performance, and to provide post-secondary institutions with the flexibility and freedom they need to innovate and compete so that institutions will attract students, faculty and research investment from around the world, enhancing the adult learning system’s contribution to Alberta’s workforce and economy.

Key Objectives

- 2.1 Reduce red tape for post-secondary providers, learners and industry by continuing to expand digital services to enhance efficiency and stakeholder experience, and streamlining processes to reduce administrative requirements for apprentices and employers.
- 2.2 Continue to develop and implement Investment Management Agreements to incentivise measurable progress towards the goals of the Alberta 2030: Building Skills for Jobs strategy and hold institutions accountable for results that are important to Albertans.
- 2.3 Strengthen and align post-secondary research commercialization with economic priorities to develop and attract research talent and investment, and attract international students who remain in Alberta and contribute to the economy.

Initiatives Supporting Key Objectives

- In fiscal 2022-23, the ministry will invest \$1.8 billion in operational funding for post-secondary institutions through the Operating and Program Support Grant.

Performance Metrics

2.a **Performance Measure: Total domestic learners enrolled in approved programs offered by Alberta’s publicly funded post-secondary institutions** (Results include apprentices enrolled in the technical training portion of their apprenticeship program at a publicly funded post-secondary institution.)

This measure shows the ministry’s continuing commitment to ensuring accessibility for domestic learners. Targets are set to maintain and increase domestic enrolment based on the 2020-21 level.

In 2020-21, 239,479 unique domestic learners enrolled in approved programs at Alberta’s publicly funded post-secondary institutions.

| | | | | | | |
|----------------|----------------|----------|----------------|----------|----------------|----------|
| Targets | 2022-23 | 239,479+ | 2023-24 | 239,479+ | 2024-25 | 239,479+ |
|----------------|----------------|----------|----------------|----------|----------------|----------|

2.b **Performance Indicator: Provincial operating investment per full time equivalent student** (Operational investment per full-time equivalent student is calculated using the provincial operational grant funding as per the Canadian Association of University Business Officers and Statistics Canada reporting. Statistics Canada is also the source of the student enrolment numbers.) This measure takes a pan-Canadian approach to enable comparability across provinces. As such, the targets reflect system-level investment in post-secondary operations.

In 2019-20 the provincial government invested \$12,666 for each full-time equivalent student enrolled in approved programs at Alberta’s publicly funded post-secondary institutions. This result was higher than British Columbia (\$10,396) and Ontario (\$6,700). (2020-21 data available January 2023).

| | | | | |
|----------------|----------------|----------------|----------------|----------------|
| 2015-16 | 2016-17 | 2017-18 | 2018-19 | 2019-20 |
| \$14,048 | \$14,127 | \$14,197 | \$13,967 | \$12,666 |

STATEMENT OF OPERATIONS

(thousands of dollars)

| | Comparable | | | 2022-23 Estimate | 2023-24 Target | 2024-25 Target |
|---|-------------------|-------------------|---------------------|---------------------|-------------------|-------------------|
| | 2020-21 Actual | 2021-22 Budget | 2021-22 Forecast | | | |
| REVENUE | | | | | | |
| Internal Government Transfers | 239,946 | 267,907 | 274,400 | 338,473 | 288,373 | 288,373 |
| Transfers from Government of Canada | 455,257 | 487,946 | 508,192 | 488,239 | 488,320 | 497,659 |
| Transfer from Alberta Heritage Scholarship Fund | 50,844 | 55,000 | 55,000 | 55,000 | 55,000 | 55,000 |
| Labour Market Development | 154,175 | 168,281 | 168,281 | 158,281 | 158,281 | 158,281 |
| Investment Income | 283,940 | 270,539 | 331,792 | 291,260 | 304,116 | 317,305 |
| Premiums, Fees and Licences | 2,203 | 3,918 | 3,918 | 3,958 | 3,958 | 3,958 |
| Tuition and Non-Credit Courses | 1,323,446 | 1,474,874 | 1,495,503 | 1,645,398 | 1,719,586 | 1,753,977 |
| Donations, Grants and Contributions | 378,583 | 327,550 | 352,056 | 348,036 | 350,295 | 357,302 |
| Gain from Government Business Enterprises | (5,346) | - | - | - | - | - |
| Sales, Rentals and Services | 336,438 | 532,093 | 412,467 | 498,417 | 532,243 | 544,110 |
| Other Revenue | 137,926 | 143,545 | 134,240 | 129,698 | 130,672 | 131,951 |
| Ministry Total | 3,357,412 | 3,731,653 | 3,735,849 | 3,956,760 | 4,030,844 | 4,107,916 |
| Inter-Ministry Consolidations | (373,186) | (383,948) | (395,246) | (454,777) | (404,453) | (404,453) |
| Consolidated Total | 2,984,226 | 3,347,705 | 3,340,603 | 3,501,983 | 3,626,391 | 3,703,463 |
| EXPENSE | | | | | | |
| Ministry Support Services | 8,628 | 8,067 | 8,692 | 8,008 | 8,006 | 8,006 |
| Program Delivery Support | 71,745 | 74,115 | 74,703 | 75,244 | 75,338 | 67,438 |
| Support for Adult Learning | 87,310 | 79,647 | 83,247 | 92,322 | 84,847 | 86,647 |
| Student Aid | 298,798 | 191,988 | 212,188 | 227,963 | 237,530 | 244,488 |
| Foundational Learning Supports | 77,458 | 92,295 | 88,695 | 92,295 | 93,395 | 93,395 |
| Post-Secondary Operations | 5,351,315 | 5,414,994 | 5,512,227 | 5,784,593 | 5,808,685 | 5,920,449 |
| Post-Secondary Debt Servicing | 40,267 | 38,797 | 38,797 | 37,539 | 37,539 | 37,539 |
| Post-Secondary Pension Provision | 32,312 | (29,940) | (3,264) | (4,676) | (6,968) | (8,800) |
| Ministry Total | 5,967,833 | 5,869,963 | 6,015,285 | 6,313,288 | 6,338,372 | 6,449,162 |
| Inter-Ministry Consolidations | (100,717) | (93,586) | (93,740) | (92,487) | (92,333) | (92,333) |
| Consolidated Total | 5,867,116 | 5,776,377 | 5,921,545 | 6,220,801 | 6,246,039 | 6,356,829 |
| Net Operating Result | (2,882,890) | (2,428,672) | (2,580,942) | (2,718,818) | (2,619,648) | (2,653,366) |
| CAPITAL INVESTMENT | | | | | | |
| Ministry Support Services | - | 25 | 25 | 25 | 25 | 25 |
| Post-Secondary Infrastructure | 484,393 | 653,196 | 654,384 | 616,092 | 449,466 | 356,319 |
| Consolidated Total | 484,393 | 653,221 | 654,409 | 616,117 | 449,491 | 356,344 |