

BUDGET 2024

GOVERNMENT OF ALBERTA | 2024-27



# Advanced Education

## Ministry Business Plan

---

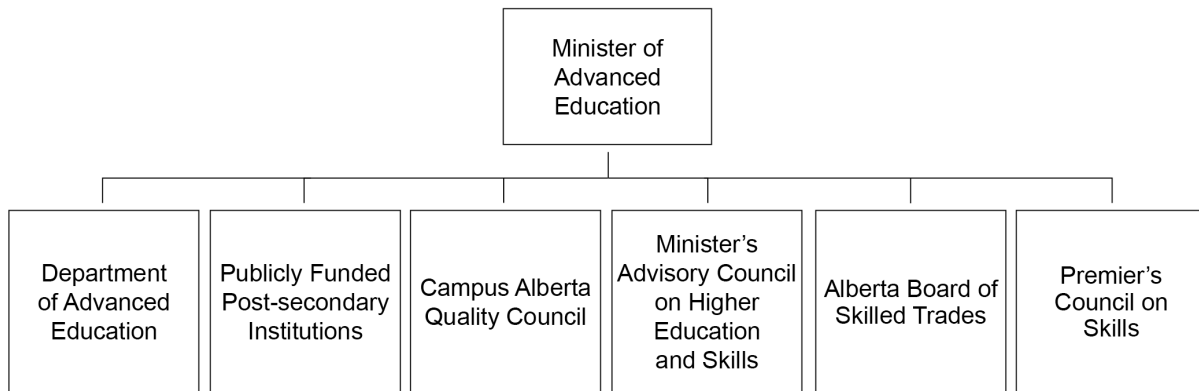
# Advanced Education

## Business Plan 2024-27

### Ministry Fact Sheet – Mandate and Structure

The Ministry of Advanced Education is responsible for an adult learning system that provides accessible, affordable and high-quality education that prepares Albertans for the workforce and supports a thriving and diverse economy and society. The ministry works closely with public post-secondary institutions, private providers, and community learning providers to support adult learning, provide educational opportunities, and enhance the adult learning system. To support affordability, the ministry provides financial supports to Albertans who are accessing post-secondary learning opportunities. It also delivers programs and policies so Alberta remains a destination of choice for skilled professionals and a leader in apprenticeship education and trades certification. Guided by the Alberta 2030: Building Skills for Jobs strategy, Advanced Education’s investment in people, infrastructure, and research capacity enables the post-secondary sector to drive job creation, innovation and economic diversification. The ministry is also committed to removing barriers to employment for highly skilled Canadian certified professional workers in regulated occupations and Albertans with foreign credentials. It collaborates with partner ministries and stakeholders on initiatives to encourage economic diversification and grow the province’s talent pipeline with the skills, knowledge, and competencies to support a prosperous society.

The Ministry of Advanced Education consists of:



A more detailed description of Advanced Education and its programs and initiatives can be found at: <https://www.alberta.ca/advanced-education>.

The Ministry of Advanced Education remains committed to regulatory approaches and program delivery that reduce unnecessary government oversight and emphasizes outcomes, in order to improve access to government services, attract investment, support innovation and competitiveness, and grow Alberta businesses.

Ministry business plans should be considered in conjunction with all budget documents - including the Fiscal Plan, Government Strategic Plan, and Estimates - which work together to provide a complete overview of government’s commitment to responsible fiscal management.

# 2024-27 Business Plan

## Outcome 1

**Albertans have the education and skills required to secure rewarding careers in the current and future labour market to support a thriving economy and society**

Through high-quality post-secondary education and enhanced pathways for learners, Albertans build the knowledge, skills and competencies needed for rewarding careers that contribute to economic growth and a prosperous society now and into the future. Advanced Education is committed to working with employers, learning providers, and other stakeholders to ensure Albertans have the lifelong skills, knowledge and competencies needed to excel.

### Key Objectives

- 1.1 Implement initiatives under the Alberta 2030: Building Skills for Jobs strategy to transform the adult learning system and focus on providing the high-quality education, skills and training needed for Alberta's future.
- 1.2 Expand and enhance a modern, flexible, and efficient skilled trades certification and apprenticeship education system in Alberta that meets the evolving needs of the economy.
- 1.3 Strengthen the alignment of post-secondary programs to employment and expand innovative learning opportunities, such as work-integrated learning, to meet Albertans' skills development needs and support labour market demand.
- 1.4 Strengthen the participation of adult learners from diverse, under-represented, and vulnerable populations in educational programs.
- 1.5 Ensure government's investments in student financial supports are responsive to the post-secondary education and skills needs of Albertans and the labour market.

### Initiatives Supporting Key Objectives

- In 2024-25, the ministry will invest \$2 billion in operational funding for post-secondary institutions through the Operating and Program Support Grant.
- The ministry will invest an additional \$102 million over the next three years to create 3,200 apprenticeship classroom seats in high demand areas and to make critical updates to apprenticeship programs.
- In 2024-25, the ministry will allocate \$182 million in student aid through scholarships, grants, and awards, and over \$1.2 billion through student loans to help Albertans benefit from adult learning opportunities.
- The ministry will invest \$2 million in 2024-25 and \$4 million each year in 2025-26 and 2026-27 to add additional mental health professional spaces in Alberta's post-secondary institutions.
- In 2024-25, the ministry will invest \$13.5 million to train more physicians in rural areas by partnering with local post-secondary institutions, for a total operating investment of nearly \$56 million over the next three years.
- In 2024-25, the ministry will invest an additional \$6.8 million to expand access to physician education to address critical shortages for physicians and medical professionals.

## Performance Metrics

### 1.a Performance Measure: Total domestic learners enrolled in approved programs offered by Alberta's publicly funded post-secondary institutions

This measure shows the ministry's continuing commitment to ensuring accessibility for domestic learners. Targets are set to maintain and increase domestic enrolment based on the 2022-23 level. Results also include apprentices enrolled in the classroom instruction portion of their apprenticeship program at a publicly funded post-secondary institution. In 2022-23, the number of unique domestic learners enrolled in approved programs at Alberta's publicly funded post-secondary institutions was 236,054.

<b>Targets</b>	<b>2024-25</b>	236,054+	<b>2025-26</b>	236,054+	<b>2026-27</b>	236,054+
----------------	----------------	----------	----------------	----------	----------------	----------

**1.b Performance Indicator: Percentage of post-secondary graduates who report being employed approximately two years after graduation**

This metric targets recent post-secondary graduates who are in the labour force and not enrolled as full-time students. Tracking employment rates of recent post-secondary graduates provides insights into whether Alberta’s post-secondary education is supporting graduates to achieve labour market outcomes. Results are collected from a biennial survey of graduates from Alberta’s publicly funded post-secondary institutions.

	<b>2014</b>	<b>2016</b>	<b>2018</b>	<b>2020</b>	<b>2022</b>
Percentage of post-secondary graduates employed	96%	92%	93%	93%	95%

**1.c Performance Indicator: Percentage of apprentices who report being employed**

This metric targets recent apprenticeship graduates who are in the labour force. Tracking employment rates of recent apprenticeship graduates provides insights into whether Alberta’s apprenticeship education is supporting graduates to achieve labour market outcomes. Results are collected from a biennial survey of apprenticeship graduates in Alberta between five and 18 months after graduation. In 2015, the survey was delayed by a year to 2016 in order to conduct a full review of the survey.

	<b>2013</b>	<b>2016</b>	<b>2018</b>	<b>2020</b>	<b>2022</b>
Percentage of apprentices employed	96%	88%	87%	90%	92%

## Outcome 2

**Alberta’s high quality adult learning system and professional regulatory environment attract, develop, and retain a skilled and talented workforce**

Advanced Education is committed to attracting and retaining learners, a skilled workforce, faculty, and research investments from within Alberta, Canada, and around the world to address the demands of the province’s economy and labour market. The ministry continues to streamline government oversight of professional regulatory organizations to further reduce any unnecessary barriers to practicing occupations in Alberta.

### Key Objectives

- 2.1 Strengthen and streamline the professional regulatory environment to reduce timelines and barriers to registration within professional occupations to attract and retain a skilled workforce in Alberta while maintaining a high standard of quality.
- 2.2 Attract qualified international students who remain in Alberta and contribute to the economy and society.
- 2.3 Increase and accelerate auto-credentialing for workers from national and international jurisdictions with similar standards, particularly for those in professions with high labour market demand.

### Initiatives Supporting Key Objectives

- In 2024-25, the ministry will invest an additional \$1.5 million, for a total of \$3 million, as part of continued implementation of Alberta’s International Education Strategy.

# Performance Metrics

**2.a Performance Indicator: Average processing time (business days) for domestic applicants who apply to a regulatory body in Alberta**

This metric shows the average processing time for applicants, from submitting a complete application to receiving certification/licensure, calculated in business days. Results exclude those in trades occupations as data on out-of-province trades workers is unavailable. Internationally trained applicants, license renewals, students and other applicant types (e.g., provisional licensure) are also excluded. Results are collected from an annual survey of regulatory bodies in Alberta.

	2017	2018	2019	2020	2021
Certified out-of-province applicants	12	10	10	6	6
First-time applicants (trained in Canada but never certified)	14	14	11	6	8

**2.b Performance Indicator: Certified out-of-province applicants applying to a regulatory body in Alberta**

This metric shows the number of certified out-of-province applicants as a percentage of the total number of domestic applicants applying to a regulatory body in Alberta. It speaks to the ministry’s effort to enable highly skilled certified professional workers, in regulated occupations, from across Canada to bring their expertise to Alberta. Results exclude those in trades occupations as data on out-of-province trades workers is unavailable. Internationally trained applicants, license renewals, students and other applicant types (e.g., provisional licensure) are also excluded. Results are collected from an annual survey of regulatory bodies in Alberta.

	2017	2018	2019	2020	2021
Certified out-of-province applicants	20%	21%	21%	30%	26%

STATEMENT OF OPERATIONS

(thousands of dollars)

	Comparable		2024-25 Estimate	2025-26 Target	2026-27 Target
	2023-24 Budget	2023-24 Forecast			
<b>REVENUE</b>					
Internal Government Transfers	297,932	298,866	<b>298,719</b>	299,115	268,741
Transfers from Government of Canada	542,404	533,953	<b>533,058</b>	547,704	556,397
Transfers from Alberta Heritage Scholarship Fund	57,986	57,986	<b>59,544</b>	59,544	59,544
Labour Market Development	153,281	153,281	<b>153,281</b>	153,281	153,281
Investment Income	362,647	428,395	<b>416,188</b>	407,372	415,089
Premiums, Fees and Licences	4,018	4,057	<b>4,085</b>	4,093	4,101
Tuition and Non-Credit Courses	1,771,259	1,925,111	<b>1,998,965</b>	2,094,259	2,136,144
Donations, Grants and Contributions	365,615	443,363	<b>439,567</b>	450,012	458,395
Sales, Rentals and Services	519,685	548,875	<b>532,958</b>	553,318	565,607
Other Revenue	130,672	130,672	<b>173,312</b>	173,312	209,791
Ministry Total	4,205,499	4,524,559	<b>4,609,677</b>	4,742,010	4,827,090
Inter-Ministry Consolidation Adjustment	(416,998)	(417,932)	<b>(419,343)</b>	(419,739)	(389,365)
Consolidated Total	3,788,501	4,106,627	<b>4,190,334</b>	4,322,271	4,437,725
<b>EXPENSE</b>					
Ministry Support Services	15,709	15,193	<b>14,936</b>	15,203	15,406
Support for Adult Learning	59,892	52,684	<b>55,297</b>	55,437	55,544
Private Career Colleges and Student Aid	300,371	317,340	<b>393,677</b>	388,176	386,168
Regulated Professions	1,647	1,647	<b>1,658</b>	1,684	1,704
Apprenticeship	47,875	47,875	<b>57,303</b>	58,785	59,084
Foundational Learning	119,633	119,633	<b>139,638</b>	143,404	147,163
Post-Secondary Operations	6,031,074	6,336,051	<b>6,441,402</b>	6,639,229	6,770,282
Post-Secondary Debt Servicing	34,247	34,247	<b>32,546</b>	33,197	33,197
Post-Secondary Pension Provision	(25,310)	(44,527)	<b>(46,592)</b>	(48,989)	(48,989)
Ministry Total	6,585,138	6,880,143	<b>7,089,865</b>	7,286,126	7,419,559
Inter-Ministry Consolidation Adjustment	(89,041)	(89,041)	<b>(87,340)</b>	(87,991)	(87,991)
Consolidated Total	6,496,097	6,791,102	<b>7,002,525</b>	7,198,135	7,331,568
Net Operating Result	(2,707,596)	(2,684,475)	<b>(2,812,191)</b>	(2,875,864)	(2,893,843)
<b>CAPITAL INVESTMENT</b>					
Ministry Support Services	25	25	<b>25</b>	25	25
Apprenticeship	25	25	<b>25</b>	25	25
Post-Secondary Infrastructure	491,673	501,028	<b>436,875</b>	420,847	484,028
Consolidated Total	491,723	501,078	<b>436,925</b>	420,897	484,078