

December 2010

Bargaining Update

Summary of Key Alberta Labour Activity

Bargaining Update provides a summary of key labour settlements and disputes, economic trends and other factors or events relevant to the Alberta labour scene.

**Government
of Alberta** ■

Alberta ■

Freedom To Create. Spirit To Achieve.



Bargaining Update

Introduction

Bargaining Update provides information about the unionized workforce, primarily in Alberta. There are approximately 2,018,800 Albertans employed, of which about 351,400 are self-employed. Nationally, the seasonally adjusted unemployment rate decreased from 7.9% in October 2010, to 7.6% in November 2010, with the number of unemployed persons decreasing by 58,800 to a total of 1,426,900. While the number of part-time workers rose by 26,700 or 4% nationally, there were 11,500 or 1.4% fewer full time workers. Unemployment in Alberta decreased from 129,500 in October 2010, to 119,900 in November 2010, with the rate decreasing from 6.0% to 5.6%. There are approximately 426,900 Albertans covered by union agreements. Alberta's union coverage rate is 25.6% while nationwide the union coverage rate is 31.7%*.

*Statistical data courtesy Statistics Canada.

Highlights

Two major province-wide health care agreements expiring March 31, 2011 are currently open for negotiations and bargaining will likely commence in January 2011. These involve Alberta Health Services and AUPE, covering about 24,000 general services support staff, and Alberta Health Services and the HSAA, covering approximately 17,000 paramedical professional and technical employees.

Quarterly Public and Private Sector Settlement Trends in Alberta

Number of Employees Covered by Ratified Collective Bargaining Agreements																
Year	2008					2009					2010					
Quarter	1	2	3	4	Total	1	2	3	4	Total	1	2	3	4 *	Total	
Public	28,380	11,099	43,615	29,380	112,474	6,804	13,892	2,679	2,274	25,649	6,262	48,387	793	210	55,652	
Private	24,540	10,083	5,929	7,453	48,005	2,968	10,581	7,469	6,717	27,735	6,922	3,488	2,053	1,903	14,366	
All	52,920	21,182	49,544	36,833	160,479	9,772	24,473	10,148	8,991	53,384	13,184	51,875	2,846	2,113	70,018	

Average Annual Wage Change %																
Year	2008					2009					2010					
Quarter	1	2	3	4	Total	1	2	3	4	Total	1	2	3	4 *	Total	
Public	2.5	4.0	4.4	4.4	3.9	4.1	2.7	1.1	1.8	2.8	3.4	3.3	3.3	2.3	3.3	
Private	4.1	5.3	4.4	5.1	4.5	1.7	2.0	0.8	3.0	1.9	1.2	1.6	1.7	2.0	1.5	
All	3.3	4.7	4.4	4.5	4.1	3.3	2.4	0.9	2.7	2.3	2.3	3.2	2.1	2.0	2.9	

* year-to-date

Note:

Employee counts may change over the term of the Collective Bargaining Agreement (CBA). The number of employees covered by an agreement is based on the number of employees reported when a CBA is filed. Settlement data reflects the percent change in wages over the term of the agreement.

Wage change percentages are weighted. Details of the calculation methodology can be obtained from the Collective Bargaining Information Services Unit of Alberta Employment and Immigration by calling (780) 427-8301 or emailing cba.submissions@gov.ab.ca.

Wage Settlements In Alberta By Industry – 2008 to 2010 (December)

Time period of Settlement by Industry	Number of Agreements	Number of Employees	Weighted Avg. Duration (months)	Percentage Change	
				Weighted Average Annual	Total Over Duration
Accommodation And Food Services					
2010	4	211	50.3	2.3	8.8
2009	10	1,137	29.0	2.9	7.8
2008	7	650	37.1	4.3	15.7
Administrative And Support, Waste Management And Remediation Services					
2010	6	641	29.3	2.0	6.3
2009	4	337	34.4	2.0	6.1
2008	1	80	36.0	5.2	16.4
Agriculture, Forestry, Fishing And Hunting					
2010	2	55	26.5	0.0	0.0
2009	0	0	0.0	0.0	0.0
2008	0	0	0.0	0.0	0.0
Arts, Entertainment And Recreation					
2010	7	573	27.1	4.3	8.0
2009	9	560	33.1	1.3	3.1
2008	4	172	31.7	4.3	13.4
Construction					
2010	33	5,184	23.6	0.5	1.2
2009	37	8,619	24.0	1.5	2.6
2008	18	9,381	39.8	6.6	23.4
Educational Services					
2010	14	1,584	32.1	1.2	4.5
2009	17	2,592	27.7	0.7	2.2
2008	82	38,773	51.0	2.6	11.0
Finance And Insurance					
2010	0	0	0.0	0.0	0.0
2009	0	0	0.0	0.0	0.0
2008	2	9	36.0	5.7	18.0
Health Care And Social Assistance					
2010	34	47,567	35.5	3.3	10.3
2009	58	7,117	35.2	3.9	11.8
2008	57	74,068	38.0	4.7	15.2
Information And Cultural Industries					
2010	5	126	46.6	1.6	6.8
2009	6	1,729	27.0	3.2	7.0
2008	3	678	32.4	3.3	9.1
Management of Companies And Enterprises					
2010	0	0	0.0	0.0	0.0
2009	0	0	0.0	0.0	0.0
2008	0	0	0.0	0.0	0.0

Time period of Settlement by Industry	Number of Agreements	Number of Employees	Weighted Avg. Duration (months)	Percentage Change	
				Weighted Average Annual	Total Over Duration
Manufacturing					
2010	35	2,400	33.7	1.4	4.7
2009	40	4,112	35.0	1.3	4.1
2008	38	3,875	37.1	5.0	15.7
Mining And Oil And Gas Extraction					
2010	5	1,931	44.4	2.2	7.7
2009	7	3,213	52.8	2.8	13.6
2008	2	1,970	58.3	5.0	26.8
Other Services (except Public Administration)					
2010	5	146	35.9	1.6	4.9
2009	11	2,600	56.2	3.3	16.6
2008	12	3,077	54.8	3.2	15.3
Professional, Scientific And Technical Services					
2010	1	80	24.0	3.6	7.2
2009	0	0	0.0	0.0	0.0
2008	1	75	36.0	8.2	26.8
Public Administration					
2010	22	5,100	23.3	3.3	7.7
2009	40	12,268	26.3	2.6	5.9
2008	30	4,811	34.0	4.4	13.1
Real Estate And Rental And Leasing					
2010	0	0	0.0	0.0	0.0
2009	0	0	0.0	0.0	0.0
2008	2	40	29.7	7.6	20.3
Retail Trade					
2010	0	0	0.0	0.0	0.0
2009	3	3,130	50.1	0.0	0.1
2008	11	15,421	43.0	3.1	12.8
Transportation And Warehousing					
2010	15	1,229	35.1	2.9	6.5
2009	16	3,499	27.9	2.4	5.3
2008	16	1,137	36.5	6.6	21.4
Utilities					
2010	6	2,274	30.2	3.5	9.4
2009	9	1,883	20.5	3.9	5.6
2008	10	4,696	26.1	3.1	7.0
Wholesale Trade					
2010	6	635	38.0	1.9	6.4
2009	3	588	65.4	3.0	17.5
2008	6	1,566	36.0	5.7	21.2

Alberta Settlements

(Note: Settlements presented in this section are selected from those with 100 or more employees)

<u>Employer</u>	<u>Union</u>	<u>No. of Employees</u>	<u>Duration (months)</u>	<u>Expiry Date</u>	<u>Terms</u>
Educational Services					
NAIT	AUPE	1000	36	30-Jun-13	1 st yr 0.0% 2 nd yr 2.0% 3 rd yr 3.0%
Health Care and Social Assistance					
Salem Manor Nursing Home	USW	109	42	31-Jul-13	1 st 6 months 0% 1 st yr 4.5% 2 nd yr 4.5% 3 rd yr 3.0%
Mining and Oil and Gas Extraction					
Ledcor Site Services	CLAC, Local 63	100	29	31-Jan-13	1 st year – First Agreement Wages reviewed on a per project basis
Other Services					
Finning International Inc.	Machinists	1,700	24	30-Apr-12	1 st year 0.0% 2 nd year 2.75%
Transportation and Warehousing					
Tracker Logistics	CAW, Local 4050	97	36	31-Oct-13	01-Nov-10 2.0% to top rate + wage adjustments 01-Nov-11 2.0% to top rate + wage adjustments 01-Nov-12 2.0% to top rate + wage adjustments
Wholesale Trade					
Federated Cooperatives (Calgary)	Teamsters, Local 987	323	48	31-Mar-14	01-Apr-10 \$0.45 to top rates, \$0.20 to start rates, others prorated. Freezer premium \$0.10/hr. 01-Apr-11 \$0.65 to top rates. Freezer premium \$0.05/hr. 01-Apr-12 \$0.65 to top rates. Freezer premium \$0.05/hr. 01-Apr-13 \$0.65 to top rates. Freezer premium \$0.05/hr.

Major Negotiations Underway

<u>Employer</u>	<u>Union</u>	<u>No. of Employees</u>	<u>Expiry Date</u>	<u>Details</u>
<u>Public Sector</u>				
Red Deer College	Support Staff Association	250	30-Jun-09	Negotiations continue.
Olds College	Faculty Association	100	30-Jun-09	In Arbitration.
Keyano College	Faculty Association	130	30-Jun-09	Memorandum of Agreement.
University of Calgary	Faculty Association	1,700	30-Jun-10	Negotiations continue.
University of Calgary	AUPE	2,900	31-Mar-10	Negotiations continue.
Buffalo Trail Public Schools (Wainwright)	CUPE, Local 1606	246	31-Aug-10	Negotiations continue.
Calgary Board of Education (CBE)	CBE Staff Association	3,535	31-Aug-10	Negotiations continue.
CBE	CBE Staff Association - Professional Staff	150	31-Aug-10	Negotiations continue.
Calgary Roman Catholic Separate School	CEP, Local 1990	1,300	31-Aug-10	Negotiations continue.
Grande Prairie Public School District	Grande Prairie Public School District Employees Association	222	31-Aug-10	Negotiations continue.
St. Albert Protestant Separate School Division	CUPE, Local 1099	215	31-Aug-10	Negotiations continue.
Elk Island Catholic Separate Regional School Division	CEP, Local 71	180	31-Aug-10	Negotiations continue.
Calgary Handi-Bus Association	ATU, Local 583	174	31-Dec-10	Negotiations continue.
City of Grande Prairie	IAFF, Local 2770	82	31-Dec-09	In Arbitration.
Special Areas Board	AUPE	114	31-Dec-09	Negotiations continue.
Government of Alberta	AUPE	22,000	31-Aug-10	Negotiations continue.
Good Samaritan	AUPE	145	30-Jun-10	Negotiations continue.
Extendicare (Red Deer)	AUPE	200	New Agreement	Negotiations continue.
Extendicare (9 locations throughout Alberta)	UNA	106	31-Jul-10	Negotiations continue.
<u>Private Sector</u>				
Buffalo Metis Catering	UFCW, Local 401	900	31-Dec-09	Negotiations continue.
Canada Safeway (Meats and Deli) – Southern Alberta	UFCW, Local 401	1,321	17-Mar-10	Negotiations continue.
Canada Safeway (Meats and Deli) – Northern Alberta	UFCW, Local 1118	780	17-Mar-10	Negotiations continue.
Canada Safeway – Lucerne Foods Meat Plant (Calgary)	UFCW, Local 401	500	31-Aug-08	Negotiations continue.
Canada Safeway	Bakery Workers	252	17-Mar-10	Negotiations continue.
Canada Safeway – Retail	UFCW, Local 401	6,837	20-Mar-10	Negotiations continue.
Chateau Lacombe Hotel – Holiday Inn Crown Plaza	UNITE HERE, Local 47	143	31-Dec-09	Negotiations continue.
Lakeside Packers - XL Foods (Brooks)	UFCW, Local 401	2,032	31-Dec-09	Negotiations continue.
Medicine Hat Co-op Ltd.	UFCW, Local 401	144	19-Jul-10	Negotiations continue.
Real Canadian Wholesale Club	CLAC	550	16-Oct-10	Negotiations continue.
XL Foods Inc – XL Beef (Calgary)	UFCW, Local 401	192	31-Mar-09	Negotiations continue.

* Date Teamsters were certified as new bargaining agent

Recent Settlements in Other Jurisdictions

<u>Employer</u>	<u>Union</u>	<u>No. of Employees</u>	<u>Duration (months)</u>	<u>Expiry Date</u>	<u>Terms</u>
Public Sector					
British Columbia					
University of Victoria	Professional Employees' Association	810	24	30-Jun-12	1 st year 0.0% 2 nd year 0.0%
Source: Business Council of British Columbia, "Industrial Relations Bulletin", September 21, 2010.					
Legal Services Society (Vancouver)	B.C. Government and Service Employees' Union	106	24	31-Mar-12	1 st year 0.0% 2 nd year 0.0%
Source: Business Council of British Columbia, "Industrial Relations Bulletin", September 21, 2010.					
Saskatchewan					
Saskatchewan Association of Health Organizations	CUPE	12,600	48	31-Mar-12	1 st year 4.0% 2 nd year 2.0% 3 rd year 1.5% 4 th year 2.0%
Source: Human Resources and Skills Development Canada, "Workplace Bulletin", November 30, 2010.					
Manitoba					
University of Manitoba (Winnipeg)	Faculty Association	1,170	36	31-Mar-13	1 st year \$500 (lump sum) 2 nd year 1.0% 3 rd year 2.9%
Sources: Human Resources and Skills Development Canada, "Workplace Bulletin", November 30, 2010.					
Ontario					
City of Mississauga (Fire and Emergency Services)	International Association of Fire Fighters	693	12	31-Dec-10	1 st year 3.0%
Source: Ontario Ministry of Labour, "Collective Bargaining Highlights", April 2010.					
York Regional Police Services Board	Police Association	1,439	36	31-Dec-12	1 st year 3.2% 2 nd year 2.9% 3 rd year 2.9%
Source: Ontario Ministry of Labour, "Collective Bargaining Highlights", March 2010.					
City of Toronto Community Housing	CUPE	385	36	31-Dec-11	1 st year 3.0% 2 nd year 3.0% 3 rd year 3.0%
Source: Ontario Ministry of Labour, "Collective Bargaining Highlights", March 2010.					
Private Sector					
British Columbia					
Council on Northern Interior Forest Employment Relations (Conifer)	Steelworkers	1,800	48	30-Jun-13	1 st year 0.0% 2 nd year 0.0% 3 rd year 2.0% 4 th year 2.0%
Source: Business Council of British Columbia, "Industrial Relations Bulletin", September 21, 2010.					
Ebco Industries (Richmond)	Ironworkers, Local 712	98	36	31-May-13	1 st year 0.0% 2 nd year 1.0% 3 rd year 3.0%
Source: Business Council of British Columbia, "Industrial Relations Bulletin", September 21, 2010.					
Ontario					
Carpenters' Employer Bargaining Agency	Carpenters' District Council of Ontario	12,000	36	30-Apr-13	1 st year 1.8% 2 nd year 3.0% 3 rd year 3.0%
Source: Ontario Ministry of Labour, "Collective Bargaining Highlights", April 2010.					
Ontario Sheet Metal Contractors' Association	Sheet Metal Workers	6,000	36	30-Apr-13	1 st year 1.8% 2 nd year 3.0% 3 rd year 3.0%
Source: Ontario Ministry of Labour, "Collective Bargaining Highlights", April 2010.					

Recent Labour Relations Developments in Other Jurisdictions

British Columbia

The dismissal of two unionized employees for comments made about managers in their workplace has been upheld by the BC Labour Relations Board. The two were working for a Pitt Meadows' car dealership which had been recently organized by UFCW. They apparently posted defamatory comments about the managers and the dealership on Facebook. One of the employees was an active organizer of the union, while the other was a supporter. The case is believed to be the first of its kind in Canada.

Source: CUPE news release, "B.C. Labour Board upholds Facebook firings", December 13, 2010.

Ontario

Toronto City Council has voted 28-17 calling on the provincial government to declare the Toronto Transit Commission an essential service. There have been nine transit strikes in Toronto since 1952, including a wildcat strike in 2006, with the longest one lasting 23 days. The most recent strike on April 2008 disrupted service for 36 hours, and cost the City an estimated \$50 million. About 10,000 transit workers are represented by the ATU, Local 113. The President of the Local 113 has stated that the number of strikes has not been significant and that City Council should redirect its focus to funding transit. If the provincial government were to declare the Toronto Transit Commission an essential service, then strikes and lockouts would be permitted, but a continued level of service would be required to be maintained.

Source: Toronto Sun, Jenny Yuen, "TTC union disappointed by vote", December 17, 2010.

Quebec

About 1,500 research assistants at McGill University in Montreal have voted 83 per cent in favour of joining PSAC. With more than 20,000 members on eight campuses, PSAC has more members than any other union in the Quebec university sector. PSAC has recently organized three other employee groups at McGill: 400 professional researchers in September 2010; 1,600 administrative and technical support employees in June 2010; and 3,000 contract employees in December 2009. Meanwhile, on December 3, 2010, PSAC was certified to represent about 4,000 administrative and technical support employees of research teams at the University of Montreal.

Source: PSAC news release, "McGill research assistants join PSAC", December 17, 2010.

Wal-Mart and UFCW have reached a settlement in an 18-month trademark dispute. In June 2009, Wal-Mart filed a motion in a Quebec court claiming trademark infringement by the UFCW on a website aimed at Wal-Mart employees. The motion noted the UFCW website's logo was very similar to that of Wal-Mart, and the website had "walmart" in its URL address. The settlement appears to involve removal of the logo from the UFCW website, but the address and other similarities remain. Wal-Mart and the UFCW have had other differences in recent years. In November 2009, the Supreme Court of Canada backed Wal-Mart's right to close a store in Jonquière which workers had attempted to unionize, and the Saskatchewan Court of Appeal ruled the UFCW properly won union certification for a Wal-Mart store in Weyburn.

Source: Reuters, "Wal-Mart and union reach settlement over website", December 16, 2010.

Quebec's Essential Services Council has approved the terms of a strike agreement between the City of Sherbrooke and 397 outside workers, represented by CUPE, Local 2729. The parties have been attempting to reach a new agreement for almost three years. The two sides have been unable to reach an agreement on the length of a new contract, with the City wanting it to last to 2014, and the union wanting a shorter term. Other outstanding issues are job security and scheduling. To put pressure on negotiations, the union went on strike December 26, 2010. Important services such as snow cleaning and sanding will not be affected, but there will be delays in garbage pick-up and recreational facilities will be closed. The employees will return to work January 7, 2011.

Sources: The (Sherbrooke) Record, Doug McCooeye, "Blue-collar strike approved", December 17, 2010.
cbc.ca, "Sherbrooke workers strike", December 27, 2010.

Newfoundland and Labrador

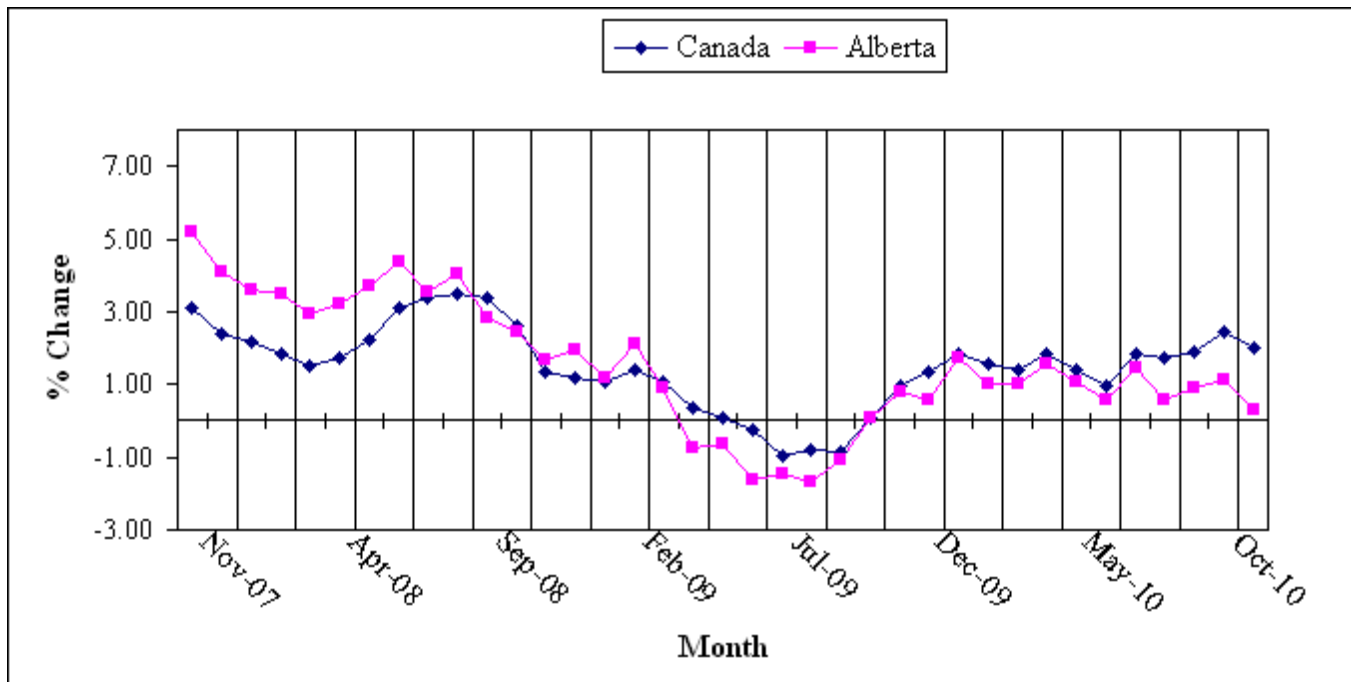
Members of the Amalgamated Transit Union, Local 1462 went on strike on November 4, 2010. The employer, Metrobus, has offered the employees 15.5 per cent over four years, but the union is seeking a more favourable group insurance plan for new employees than that offered by the employer. The strike is occurring in the midst of a City-funded review of the entire Metrobus service, which has seen ridership decline since 2006. Between 9,000 and 14,000 people use public transportation in St. John's each day, many of them students.

Source: cbc.ca, "Mayor wants St. John's bus strike over soon", December 17, 2010.

Consumer Price Index (CPI), Canada versus Alberta

Year over Year % Change (Monthly in CPI: Canada & Alberta (2002=100))

November 2007 to November 2010



Consumer Price Index (2002=100): Canada, Alberta, Edmonton & Calgary, 2007 to 2010

Year	Canada		Alberta		Edmonton		Calgary	
	CPI (2002=100)	Yr. Over Yr. % Change (Annual)	CPI (2002=100)	Yr. Over Yr. % Change (Annual)	CPI (2002=100)	Yr. Over Yr. % Change (Annual)	CPI (2002=100)	Yr. Over Yr. % Change (Annual)
2007	111.51	2.19	117.93	4.97	117.48	4.88	118.02	5.06
2008	114.11	2.33	121.63	3.14	121.39	3.33	121.79	3.20
2009	114.43	0.28	121.46	-0.14	121.62	0.19	121.73	-0.05
2010**	116.37	1.69	122.67	1.00	122.84	1.00	122.71	0.80
Month (2009/2010)	CPI (2002=100)	Yr. Over Yr. % Change (Monthly)	CPI (2002=100)	Yr. Over Yr. % Change (Monthly)	CPI (2002=100)	Yr. Over Yr. % Change (Monthly)	CPI (2002=100)	Yr. Over Yr. % Change (Monthly)
Nov-09	115.2	0.96	122.6	0.82	122.7	1.07	122.7	0.57
Dec-09	114.8	1.32	121.9	0.58	122.0	0.83	122.1	0.25
Jan-10	115.1	1.86	122.3	1.75	122.4	1.83	122.4	1.41
Feb-10	115.6	1.58	122.7	0.99	122.9	1.15	122.8	0.74
Mar-10	115.6	1.40	122.1	0.99	122.3	1.16	122.3	0.82
Apr-10	116.0	1.84	122.3	1.58	122.6	1.74	122.4	1.32
May-10	116.3	1.39	122.7	1.07	122.8	0.99	122.8	1.07
Jun-10	116.2	0.96	122.7	0.57	122.7	0.41	122.9	0.66
Jul-10	116.8	1.83	123.3	1.48	123.5	1.40	123.3	1.40
Aug-10	116.7	1.74	122.7	0.57	122.9	0.66	122.7	0.49
Sep-10	116.9	1.92	122.6	0.91	122.8	0.57	122.6	0.41
Oct-10	117.4	2.44	123.0	1.15	123.3	1.23	122.9	0.82
Nov-10	117.5	2.00	123.0	0.33	123.0	0.24	122.7	0.00

** - Year to date

Year over Year % Change (Annual) - (Ave. of current year CPI - Ave. of previous year CPI) / Ave. of previous year CPI x 100

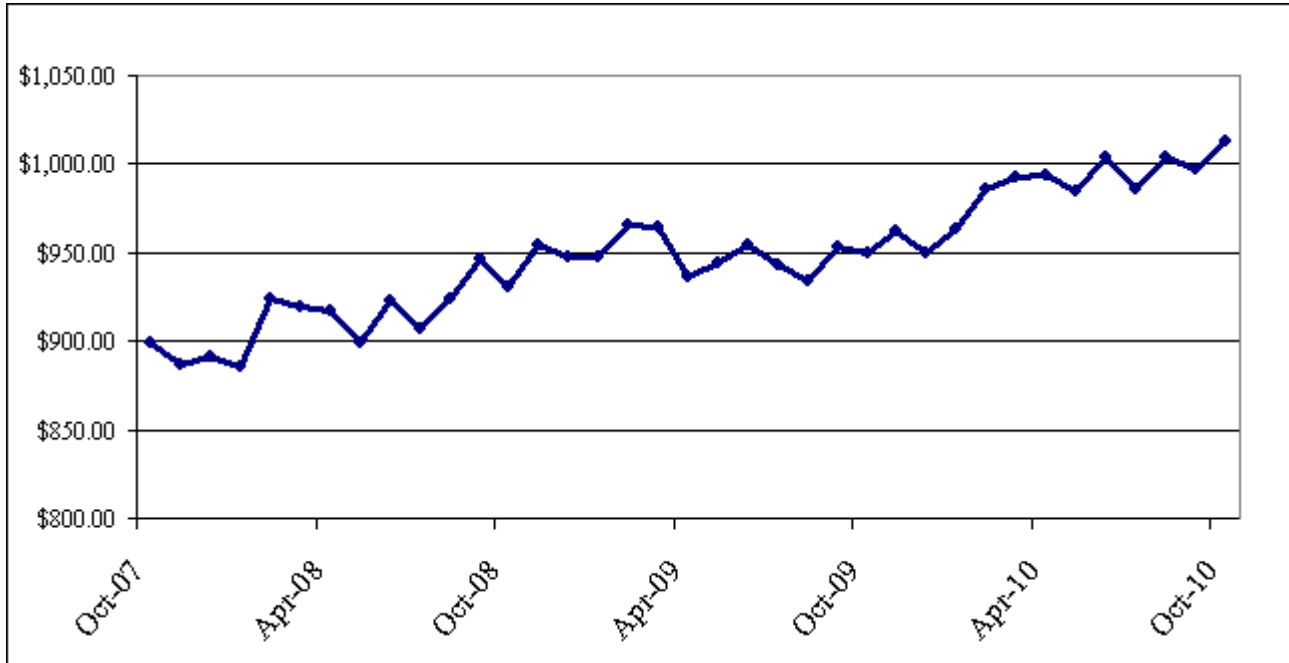
Year over Year % Change (Monthly) - (Current month CPI - Same month previous year CPI) / Same month previous year CPI x 100

Source: Statistics Canada Consumer Price Index

Average Weekly Earnings Alberta (AWEA)

Year over Year Change (Monthly in AWEA*)

October 2007 to October 2010



Monthly AWEA		
Yr. Over Yr. % Change (Monthly)		
Oct-09	\$949.74	2.04
Nov-09	\$962.54	0.89
Dec-09	\$949.32	0.18
Jan-10	\$963.38	1.63
Feb-10	\$985.99	2.15
Mar-10	\$993.04	3.00
Apr-10	\$993.17	6.07
May-10	\$985.03	4.37
Jun-10	\$1,003.53	5.13
Jul-10	\$985.81	4.50
Aug-10	\$1,004.11	7.45
Sep-10	\$996.80	4.64
Oct-10	\$1,012.54	6.61

Yearly AWEA		
Yr. Over Yr. % Change (Annual)		
2005	\$783.90	5.78
2006	\$823.35	5.03
2007	\$871.06	5.79
2008	\$923.21	5.99
2009	\$950.34	2.94
2010**	\$992.34	4.42

**Year to date.

Year over Year % Change (Annual) - (Ave. of current year AWEA - Ave. of previous year AWEA) / Ave. of previous year AWEA x 100

Year over Year % Change (Monthly) - (Current month AWEA - Same month previous year AWEA) / Same month previous year AWEA x 100

Source: Statistical data supplied by Statistics Canada

Employer Name Listing

CLR – Construction Labour Relations

GPC – General Presidents’ Maintenance Committee for
Canada

Union Name Listing

ACTRA - Alliance of Canadian Cinema, Television
and Radio Artists
ATA – Alberta Teachers’ Association
ATU – Amalgamated Transit Union
AUPE – Alberta Union of Provincial Employees
AWIU – International Association of Heat and Frost
Insulators and Allied Workers
BCTGM – Bakery, Confectionery, Tobacco and Grain
Millers International Union
Boilermakers – International Brotherhood of
Boilermakers, Ironship Builders, Blacksmiths, Forgers,
and Helpers
Bricklayers – International Union of Bricklayers and
Allied Craftworkers
CAAMSE – Central Alberta Association of Municipal
and School Employees Union
Carpenters – United Brotherhood of Carpenters and
Joiners of America
CAW – Canada National Automobile, Aerospace,
Transportation and General Workers Union of Canada
CEP - Communications, Energy and Paperworkers
Union
CISIW – Canadian Iron, Steel and Industrial Workers
CLAC – Christian Labour Association of Canada
Communications Workers – Communications
Workers of North America
COPE – Canadian Office and Professional Employees
Union
CSU 52 – Civic Service Union 52
CUPE – Canadian Union of Public Employees
CWA-SCA – Media and Communications Workers of
America (Canada)
Elevator Constructors – International Union of
Elevator Constructors
GCC – Graphics Communications Conference
(Teamsters)
Glass, Molders, Pottery, Plastics – Glass, Molders,
Pottery, Plastics and Allied Workers International
Union
Glass Workers – Aluminum, Brick and Glass Workers
International Union
HEU – Hospital Employees’ Union (BC)
HSA – Health Sciences Association of Alberta
IAFF – International Association of Firefighters

IATSE – International Alliance of Theatrical Stage
Employees and Moving Picture Machine Operators of
the United States and Canada
IBEW – International Brotherhood of Electrical
Workers
Iron Workers – International Association of Bridge,
Structural and Ornamental Iron Workers
IUOE – International Union of Operating Engineers
Labourers – Labourers’ International Union of North
America
Machinists – International Association of Machinists
and Aerospace Workers
Millwrights – Millwrights, Machinery, Erectors and
Maintenance Union
Mine Workers – United Mine Workers of America
Musicians – American Federation of Musicians of the
United States and Canada
NASA – Non-Academic Staff Association
OPSEU – Ontario Public Service Employees Union
Painters – International Brotherhood of Painters and
Allied Trades
Plasterers/Cement Masons – Operative Plasterers and
Cement Masons International Association of the
United States and Canada
Plumbers – The United Association of Journeymen
and Apprentices of the Plumbing and Pipefitting
Industry of the United States and Canada
PPWC – Pulp, Paper and Woodworkers of Canada
PSAC – Public Service Alliance of Canada
SEIU – Service Employees International Union
Sheet Metal Workers – Sheet Metal Workers
International Association
Teamsters – International Brotherhood of Teamsters
TWU – Telecommunications Workers Union
UFCW – United Food and Commercial Workers
UNA – United Nurses of Alberta
UNITE HERE – Union of Needletrades, Industrial and
Textile Employees and Hotel Employees and
Restaurant Employees
USW – United Steel, Paper and Forestry, Rubber,
Manufacturing, Energy, Allied Industrial and Service
Workers International Union
UUWA – United Utility Workers Association

Please note that industry associations may not appear in the above listing

Resource List

Other Alberta labour market resources:

- [Alberta Labour Relations Board \(ALRB\)](#) - ([Active ALRB certificates](#))
- [Alberta Chamber of Commerce](#)
- [Alberta Economic Reviews](#) (contains key economic indicators, updated monthly)
- [Alberta Employment and Immigration Labour Market reports](#)
- [Alberta Labour Force Statistics](#)
- [Alberta Regional Labour Market News](#)
- [Alberta Learning Information Service \(ALIS\)](#)
- [City of Edmonton Economic Statistics](#)
- [City of Calgary Economic Reports](#)
- [Alberta Federation of Labour \(AFL\)](#)

Other Provinces' CBA and Mediation listings:

- [Newfoundland/Labrador](#)
- [Ontario](#)
- [Manitoba](#) (various research resources)
- [Saskatchewan Mediation](#)
- [British Columbia CBA listing](#)
- [British Columbia Bargaining Database](#)

Federal Organizations:

- [Human Resource and Social Development Canada \(HRSDC\)](#)
- [Canadian Labour Congress \(CLC\)](#)
- [Negotech](#) (Federal CBA search page)
- [Federal Public Service CBA listings](#)
- [University of Toronto resources](#) (various labour relations resources)

International:

- [United States Department of Labor Contracts Database](#)

Please note: These links are available online at <http://www.employment.alberta.ca/SFW/6484.html>