

MOWER FALLS ON WORKER

Type of Incident: Fatality

Date of Incident: November 18, 2009

TABLE OF CONTENTS

SECTION	TITLE	PAGE NUMBER
1.0	DATE AND TIME OF INCIDENT	3
2.0	NAME & ADDRESS OF PRINCIPAL PARTIES	3
2.1	Owner	3
2.2	Prime Contractor	3
2.3	Employer(s)	3
2.4	Contractor(s)	3
2.5	Supplier(s)	3
2.6	Workers(s)	3
2.7	Others	3
3.0	DESCRIPTION OF PRINCIPAL PARTIES	4
3.1	Employers	4
3.2	Worker	4
4.0	LOCATION OF INCIDENT	4
5.0	EQUIPMENT, MATERIAL AND OBSERVATIONS	4
5.1	Equipment and Material	4
5.2	Observations	5
6.0	NARRATIVE DESCRIPTION OF INCIDENT	5
7.0	ANALYSIS	6
7.1	Direct Cause	6
7.2	Contributing Factors	6
8.0	FOLLOW-UP/ ACTION TAKEN	6
8.1	Occupational Health and Safety	6
8.2	Industry	7
8.3	Additional Measures	7
9.0	SIGNATURES	8
10.0	ATTACHMENTS	8

SECTION 1.0 DATE AND TIME OF INCIDENT

1.1 November 18, 2009 between 2:55 p.m. and 9:00 p.m.

SECTION 2.0 NAME AND ADDRESS OF PRINCIPAL PARTIES

2.1 Owner(s)

2.1.1 Alberta Health Services
700 Manulife Place
10180 – 101 Street
Edmonton, Alberta
T5J S43

2.2 Prime Contractor

Not applicable.

2.3 Employer

2.3.1 Alberta Health Services (Palliser Health Region 2)
666 – 5 Street S.W.
Medicine Hat, Alberta
T1A 4H6

2.4 Contractor(s)

Not applicable.

2.5 Supplier(s)

Not applicable.

2.6 Worker(s)

2.6.1 Worker 1 (*****)

(Names and personal details were removed before distribution of this report.)

2.7 Others

2.7.1 G4S Security Services (Canada) Ltd.
525 – 4 Street S.E.
Medicine Hat, Alberta
T1A 0K7

- 2.7.2 Constable *****
Medicine Hat Police Service
884 – 2 Street S.E.
Medicine Hat, Alberta
T1A 8H2

SECTION 3.0 DESCRIPTION OF PRINCIPAL PARTIES

- 3.1.1 Alberta Health Services (AHS) is the provincial government department responsible for Albertan’s health care. AHS operates hospitals and clinics in various locations across the province.
- 3.1.2 Palliser Health Region 2 (PHR) was formerly the name of the health region responsible for the Medicine Hat Regional Hospital prior to the reorganization which created AHS.
- 3.1.3 Approximately 1,500 workers are employed at the Medicine Hat Regional Hospital. Thirty-five are employed in the Facilities Maintenance and Engineering Department (FM&E).
- 3.1.4 Worker 1 (*****) had been employed as the Head Gardener for the Medicine Hat Regional Hospital for approximately four years.

SECTION 4.0 LOCATION OF INCIDENT

- 4.1.1 The incident occurred in the Grounds Keeping Garage (maintenance garage) of the Medicine Hat Regional Hospital located at 666 – 5 Street S.W., Medicine Hat, Alberta (Refer to Attachment A – Map and Attachment B – Photographs 1 and 2).

SECTION 5.0 EQUIPMENT, MATERIAL AND OBSERVATIONS

5.1 Equipment and Material

- 5.1.1 The equipment involved in the incident was a John Deere mower, Model 1445, four-wheel drive, Product Identification Number TC1445D060608, used for lawn mowing and snow removal. The left rear wheel had temporarily been removed for servicing (Refer to Attachment B - Photographs 3 and 4).
- 5.1.2 A single, wood block measuring approximately 45 centimeters long, 14 centimeters wide and 14 centimeters deep was found under the rear end of the mower. This wood block was used to support the back end of the mower in the raised position prior to the incident (Refer to Attachment B - Photograph 5).

- 5.1.3 A Nike, Model 321HC, 1.5 ton hydraulic floor jack, Serial Number 23597-4, was found approximately 1.5 meters behind the mower. This jack was found with the hydraulics in the lowered and released position (Refer to Attachment B - Photograph 5).
- 5.1.4 A hand-operated grease gun was found in Worker 1's (*****) left hand (Refer to Attachment B - Photograph 5).

5.2 Observations

- 5.2.1 A flashlight was found underneath the mower.
- 5.2.2 An Operator's Manual for the John Deere 1445 mower was found on the desk in the maintenance garage. It was found open at pages 26 and 27 referencing service intervals and lubrication.

SECTION 6.0 NARRATIVE DESCRIPTION OF THE INCIDENT

- 6.1 On November 20, 2009, at approximately 7:00 a.m., Worker 1 (*****) began his shift. Worker 1 (*****) was observed at work by the Lead Hand (*****) that morning.
- 6.2 At approximately 2:55 p.m., the Wife (*****) of Worker 1 (*****) phoned him to inform him that she was going to pick up his parents at the airport. Worker 1 (*****) told her he would be home shortly.
- 6.3 At approximately 5:30 p.m., the Wife (*****) of Worker 1 (*****) phoned Worker 1 (*****) on his cell phone and received no response. She phoned and text messaged Worker 1 (*****) several times after the initial attempt to reach him however received no response.
- 6.4 At approximately 6:30 p.m., the Wife (*****) phoned the Father (*****) of Worker 1 (*****) to express concern about not reaching Worker 1 (*****).
- 6.5 At approximately 8:30 p.m., the Father (*****) drove to the Medicine Hat Regional Hospital. He looked for the personal vehicle of Worker 1 (*****) and found it parked in the parkade. The Father (*****) called the Wife (*****) to tell her he'd located Worker 1's (*****) vehicle. The Wife (*****) provided directions for the Father (*****) to look for Worker 1 (*****) in the maintenance garage.

- 6.6 At approximately 9:00 p.m., the Father (*****), who was still on the phone with the Wife (*****), entered the maintenance garage and found Worker 1 (*****) lying motionless under the back end of the mower. The Father (*****) directed the Wife (*****) to call 911.
- 6.8 The Father (*****) then went to the hospital switchboard to get help. The switchboard operator (*****) paged Boiler Plant Operator (*****) and asked him to go with the security guards (*****) and (*****) to the aid of Worker 1 (*****) .
- 6.9 The Boiler Plant Operator (*****) and the security guards (*****) and (*****) went to the maintenance garage and found Worker 1 (*****) underneath the back end of the mower. Emergency Medical Services, Boiler Plant Operator (*****) and the security guards (*****) and (*****) jacked up and blocked the mower to free Worker 1 (*****) . Worker 1 (*****) was pronounced deceased at the site.

SECTION 7.0 ANALYSIS

7.1 Direct Cause

- 7.1.1 Worker 1 (*****) was fatally injured when the mower fell on him.

7.2 Contributing Factors

- 7.2.1 A single wood block was used to support the raised back end of the mower. This was not in accordance with the manufacturer's specifications for blocking procedures.
- 7.2.2 No hazard assessment was conducted for maintenance of the mower.

SECTION 8.0 FOLLOW-UP/ ACTION TAKEN

8.1 Employment and Immigration; Occupational Health and Safety

- 8.1.1 Occupational Health and Safety (OHS) received an incident notification on November 18, 2009 at approximately 10:08 p.m., responded to the scene and commenced an incident investigation.

8.1.2 OHS issued the following orders to AHS:

- Conduct a hazard assessment for maintenance work performed on powered mobile equipment, communicate hazards to affected workers and implement controls.
- A stop use order on the John Deere 1445 mower (Product Identification Number: TC1445D060608) to ensure the unit has been inspected and repaired in accordance with the manufacturer's specifications.
- Review and update the employer's working alone policy and procedures.
- Conduct an incident investigation and prepare a report outlining the circumstances surrounding the incident, including preventive measures.

8.2 Industry

8.2.1 AHS investigated the incident, prepared a report and submitted it to OHS.

8.2.2 AHS had the John Deere 1445 mower (Product Identification Number: TC1445D060608) inspected and repaired in accordance with the manufacturer's specifications.

8.2.3 AHS reviewed and updated their working alone policy and procedures and trained all workers.

8.2.4 AHS completed a hazard assessment for maintenance work performed on powered mobile equipment.

8.2.5 AHS contracted a factory authorized service representative to provide training to workers on operating and servicing the John Deere 1445 mower.

8.2.6 AHS complied with all orders issued by OHS.

8.3 Additional Measures

8.3.1 No additional measures.

SECTION 9.0 SIGNATURES

Original Report Signed
Lead Investigator

Date

Original Report Signed
Reviewer

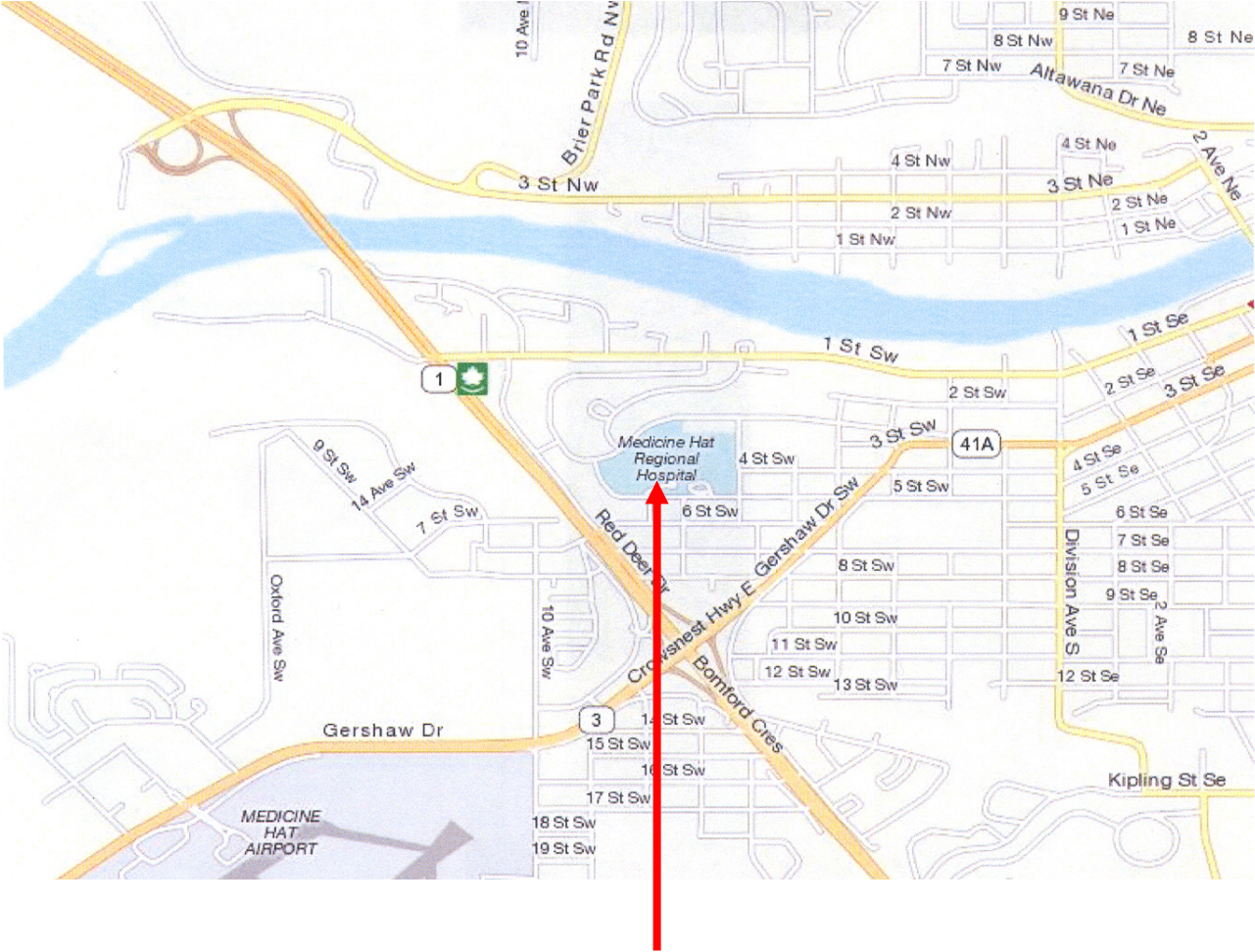
Date

Original Report Signed
Director South Region

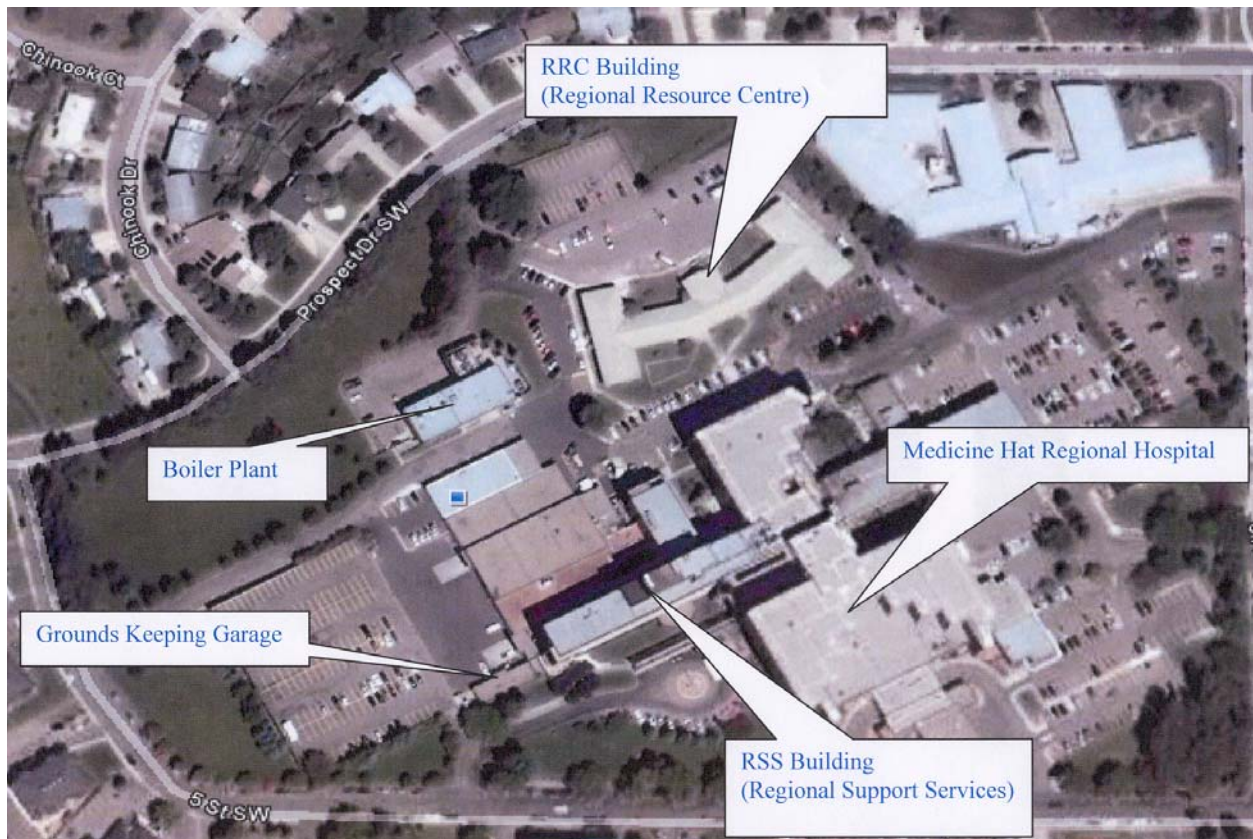
Date

SECTION 10.0 ATTACHMENTS:

Attachment A - Map.
Attachment B – Photographs.



Red arrow shows the location where the incident occurred – 666 – 5 Street S.W., Medicine Hat, Alberta.



Photograph 1 - Shows the layout of all buildings at the Medicine Hat Regional Hospital site. The incident occurred in the Grounds Keeping Garage (maintenance garage).



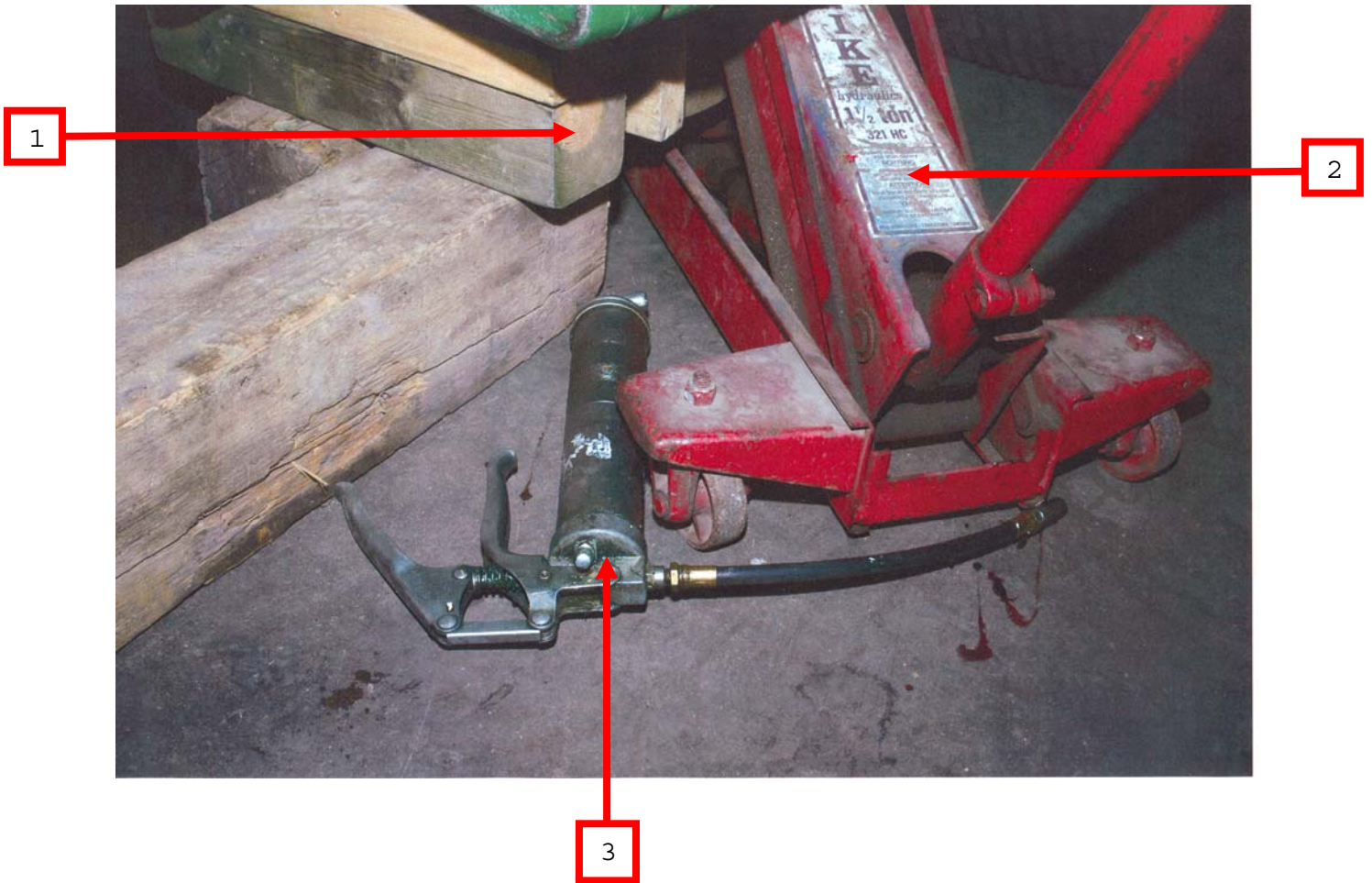
Photograph 2 – Red arrow shows the overhead door into the maintenance garage where the incident occurred.



Photograph 3 – Shows the John Deere Model 1445 mower involved in the incident.



Photograph 4 – Shows the left rear hub of the John Deere 1445 mower. The wheel had been removed for servicing.



Photograph 5 – Shows:

1. A wood block 45 centimeters long was used to support the mower in a raised position. It was found under the rear end of the mower.
2. The hydraulic floor jack that was found approximately 1.5 meters behind the mower.
3. The hand-operated grease gun found in Worker 1's (*****
left hand.