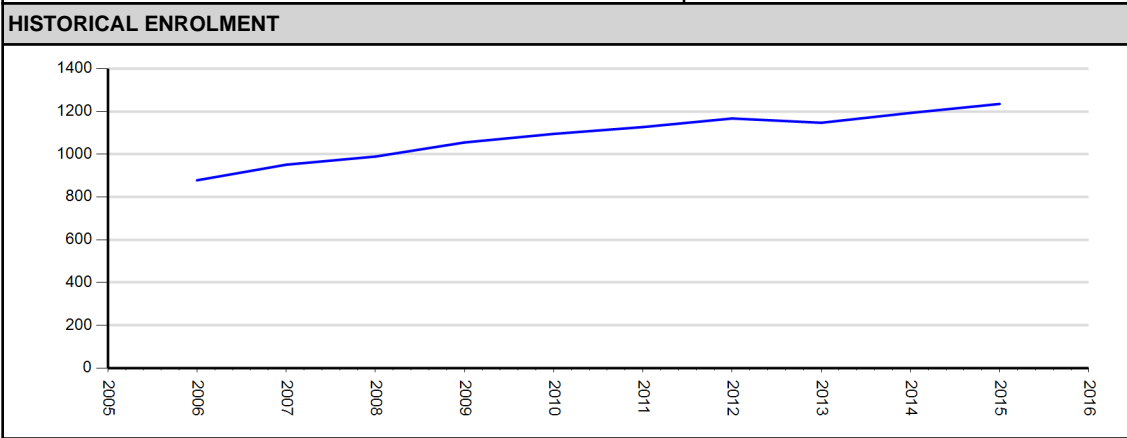


**Westmount Charter School Society** **Public Charter**  
**Zone 5 Services**

<b>Address and Phone</b>	728 - 32 Street NW Calgary AB T2N2V9 (403) 217-3707		
<b>Superintendent</b>	Joe Frank		
<b>Chair, Board of Directors</b>	Graeme Finlay		
<b>No. of Directors, Including Chair</b>	8		
<b>Description of Charter</b>	The school's charter mandate is to provide differentiated educational programming for the gifted in a congregated setting from kindergarten through grade 12. It seeks to be recognized as the centre for excellence in gifted education.		
<b>Original Approval Date</b>	<b>Rated Capacity</b>	<b>Approved Enrolment Cap</b>	<b>No. of Sites</b>
October 10, 2000	1,633	1,200	2
<b>Current Term End Date</b>	<b>Funded Students Head Count (2015/2016)</b>	<b>Certificated FTE Staff (2014/2015)</b>	<b>Grade Range</b>
31 August, 2016	1,283	77	K-12

FINANCES		
<b>2015/2016 Estimated Operational Funding</b>	<b>Adjusted Accumulated Surplus from Operations (ASO) (As of August 31, 2015)</b>	<b>ASO as a % of Total Expenses</b>
\$12,076,000	\$353,485	2.1%

STUDENT DEMOGRAPHICS	
Funded Students Head Count	1,283
% of Provincial Funded Student	0.20%
ESL Funded Students	187
FNMI Funded Students	2



**ANNUAL EDUCATION RESULTS REPORT AND THREE YEAR EDUCATION PLAN**

[Combined Three Year Education Plan and Annual Education Results Report](#)

<b>CLASS SIZE INITIATIVE</b> (average student count per classroom)	<b>Grade Grouping</b>	<b>2015/2016</b>
	<b>K-3</b>	20.3
	<b>4 - 6</b>	25.3
	<b>7 - 9</b>	23.6
	<b>10 - 12</b>	19.1

Data Current as of Aug 24, 2015 Accountability Pillar Results	Achievement	Improvement
Safe and Caring	Blue	Orange
Program of Studies	Blue	Yellow
Education Quality	Blue	Orange
Drop Out Rate	Blue	Green
High School Completion Rate (3 yr)	Blue	Yellow
PAT: Acceptable	Blue	Orange
PAT: Excellence	Blue	Orange
Diploma: Acceptable	Blue	Yellow
Diploma: Excellence	Blue	Green
Diploma Exam Participation Rate (4+ Exams)	Blue	Yellow
Rutherford Scholarship Eligibility Rate	Blue	Yellow
Transition Rate (6 yr)	Blue	Yellow
Work Preparation	Yellow	Red
Citizenship	Blue	Red
Parental Involvement	Green	Orange
School Improvement	Blue	Blue
-	Orange	Yellow
	Green	Blue
	Blue	+

CAPITAL				
Approved Modulars 2015/2016 School Year				0
Current Capital Projects	School	Location	Grade	Current Capacity (Change)
Modernization	Sir William Van Horne High School Modernization	Calgary	5-12	