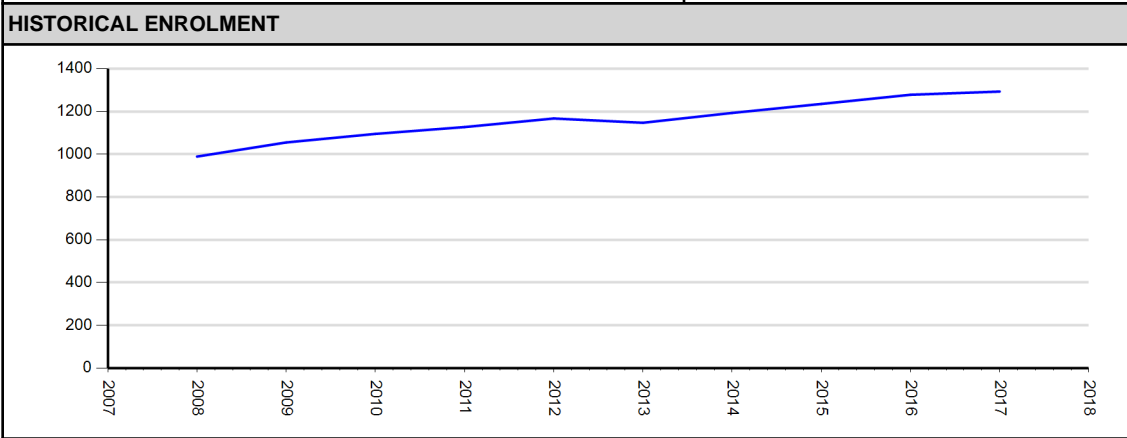


Westmount Charter School Society **Public Charter**
Zone 5 Services

Address and Phone	728 - 32 Street NW Calgary AB T2N2V9 (403) 217-3707		
Superintendent	Joe Frank		
Chair, Board of Directors	None		
No. of Directors, Including Chair	8		
Description of Charter	The school's charter mandate is to provide differentiated educational programming for the gifted in a congregated setting from kindergarten through grade 12. It seeks to be recognized as the centre for excellence in gifted education.		
Original Approval Date	Rated Capacity	Approved Enrolment Cap	No. of Sites
October 10, 2000	1,634	1,200	2
Current Term End Date	Funded Students Head Count (2016/2017)	Certificated FTE Staff (2017/2018)	Grade Range
31 August, 2031	1,293	120	K-12

FINANCES		
2016/2017 Estimated Operational Funding	Adjusted Accumulated Surplus from Operations (ASO) (As of August 2016)	ASO as a % of Total Expenses
\$12,631,000	\$562,093	3.4%

STUDENT DEMOGRAPHICS	
Funded Students Head Count	1,293
% of Provincial Funded Student	0.20%
ESL Funded Students	216
FNMI Funded Students	2



ANNUAL EDUCATION RESULTS REPORT AND THREE YEAR EDUCATION PLAN

[Combined Three Year Education Plan and Annual Education Results Report](#)

CLASS SIZE INITIATIVE (average student count per classroom)	Grade Grouping	2016/2017
	K-3	20.4
	4 - 6	26.4
	7 - 9	23.9
	10 - 12	19.0

Data Current as of Aug 28, 2017 Accountability Pillar Results	Achievement	Improvement
Safe and Caring	Blue	Yellow
Program of Studies	Blue	Yellow
Education Quality	Blue	Yellow
Drop Out Rate	Blue	Orange
High School Completion Rate (3 yr)	Blue	Yellow
PAT: Acceptable	Blue	Yellow
PAT: Excellence	Blue	Green
Diploma: Acceptable	Blue	Orange
Diploma: Excellence	Blue	Orange
Diploma Exam Participation Rate (4+ Exams)	Blue	Orange
Rutherford Scholarship Eligibility Rate	Blue	Blue
Transition Rate (6 yr)	Blue	Green
Work Preparation	Green	Yellow
Citizenship	Blue	Yellow
Parental Involvement	Blue	Yellow
School Improvement	Blue	Yellow
-	Orange	Yellow
	Green	Blue
		+

CAPITAL				
Approved Modulars 2016/2017 School Year				0
Current Capital Projects	School	Location	Grade	Current Capacity (Change)