

Breast Cancer Screening
Minimum Data Set

HEALTH INFORMATION STANDARDS COMMITTEE FOR
ALBERTA

DRAFT VERSION 0.8
Draft Approval: April 25, 2000

Compiled By:

alberta we//net

Note: Currently the Breast Cancer Screening MDS supports the recruitment functions as approved by the ABC Program Interim Implementation Committee in Dec/99

Document Location

The document is located on the following directory:

Revision History

Date of This Revision: May 12, 2000	Date of Next Revision: To be Determined
--	--

Version	Revision Date	Summary of Changes	Changes Marked
0	February 23, 2000	First Issue	N
0	March 7, 2000	HISCA Draft Status: Pending Approval Status	N
0.7	April 25, 2000	Approved as a Draft Standard	N
0.8	May 12, 2000	Distribution of the Draft Standard	N
Note: Please Refer to the Breast Cancer Screening Change Control Form for a chronological listing of specific changes made to this document.			

Table of Contents

1. INTRODUCTION.....	4
2. COMPONENTS OF THE DATA ELEMENT STANDARD.....	6
3. BREAST CANCER SCREENING SUBJECT AREA.....	9
BACKGROUND.....	9
RESULTS OF THE LITERATURE REVIEW.....	10
BUSINESS CASE FOR THE ALBERTA HEALTH AND WELLNESS SYSTEM.....	11
FEASIBILITY AND EASE OR DIFFICULTY OF IMPLEMENTATION.....	11
IMPACT ON PRIVACY, CONFIDENTIALITY AND SECURITY.....	11
RELATIONSHIP TO EXISTING STANDARDS AND/OR LEGISLATION.....	12
SUMMARY OF CONSENSUS TO DATE.....	12
4. BREAST CANCER SCREENING CONCEPTUAL MODEL.....	13
5. BREAST CANCER SCREENING DATA ELEMENT LIST.....	22
6. BREAST CANCER SCREENING DATA ELEMENT STANDARDS.....	25
APPENDIX A - CLASS DIAGRAM: LOGICAL VIEW BCSP.....	119

1. Introduction

The two major categories of standards targeted by the Health Information Standards Committee of Alberta (HISCA) for definition and adoption are:

- Health Information Standards; and
- Health Technology Standards.

Under the Information Standards category, data standards are defined from two perspectives:

- Data Administration (Data Dictionary) Standards

This level of standard deals with fundamental properties of data elements, and focuses on definition, storage format and use of the data element.

- Data Architecture (Modeling) Standards

This level of standard builds upon the basic definition and properties of the data elements as defined at the data administration level. It extends their use in the context of standard applications (modeling requirements) and standard data groupings/collections (minimum data sets).

The standards described in this document are of the data administration type, dealing with the definition of data elements as they relate to the health business.

The purpose of this document is to define the minimum data set (MDS) for the operation of the recruitment component of a breast cancer screening program in the province of Alberta. The elements included in the MDS identify the woman's demographics, BCS screening event and health service providers associated with the screening event.

This document is divided into the following sections:

1. Introduction

Section 1 provides a brief description of the purpose and contents of the document.

2. Components of the Data Element Standard

Section 2 puts into perspective the extent of the standards being proposed in Section 4. It describes characteristics of a data element standard and spells out the need for element standards at the *naming*, *definition* and *value set* levels.

3. Breast Cancer Screening Subject Area

Section 3 provides a background as to how the minimum data set has been defined and presents business context information for the breast cancer screening data standards.

4. Breast Cancer Screening Conceptual Model

Section 4 presents the standard specification at a conceptual view for the breast cancer screening MDS.

5. Breast Cancer Screening Data Element List

Section 5 presents each data element in the breast cancer screening MDS in a summarized list.

6. Breast Cancer Screening Data Element Standards

Section 6 presents the standard specification for each data element in the breast cancer screening using the standard template format.

Appendix A

Appendix A presents an class diagram at the logical level to facilitate understanding of the business data, the relationships and the information requirements for the breast cancer screening application. The logical data model reflects the business perception of the breast cancer data elements free of technology constraints. The Alberta Health Enterprise Architecture Definition (AHEAD) Logical Data Model has been used as the basis for the Breast Cancer Screening Class Diagram.

2. Components of the Data Element Standard

For the purposes of defining standards, a data element may be thought of as being either a compound element or an atomic data element. Compound and/or atomic data elements may be grouped together to form an Information Cluster.

- Information Cluster

Information clusters are generally subject area topics of interest in the health information system, comprising group of data elements or other informational items. Examples include Person Identification Information and Registration Information.

- Compound Data Elements

Compound data elements are usually generic informational items that have component parts. These data elements have component parts for which business requires that they be defined, described and identified separately. Standards are required for the level of granularity of the compound data element, as well as nomenclature for the component parts. Examples of compound data elements are:

- Address

An address is a compound data element (logical element) for which a rationale for its standardization may be defined. However, there is always a business requirement to deal with an address in its component parts.

- Name

A person's name is another compound data element for which standards for its component parts may differ from organization to organization.

Standards are required for the breakdown (# of component elements), as well as the names for which these component parts are to be referred. The following is an example of the three different compositions of a name and the difference in which the component parts are referred to, by different organizations.

Last Name / First Name / Middle Name

Versus

Surname / First Given Name / Second Given Name / Third Given Name

Versus

Family Name / Given Name / Middle Name / Prefix/Suffix

- Atomic Data Elements

These are data elements that cannot be broken into components and still retain their meaning to a business. Examples of atomic level data elements are:

- Gender
- Last Name
- Stakeholder Unique Lifetime Identifier (ULI)

- Categories of Information

- *Definition*

Brief description of the data element in terms of its significance and intended use.

- *Storage Format*

This is the physical characteristic (data type & size) assigned to an atomic level data element when it is stored in an electronic medium.

- *Presentation/Display Format*

This is the standard being proposed for displaying or printing the value of the data element.

- *Requirement for Standard*

Brief description of the rationale for proposing that the data element be standardized.

- *Valid Values*

For those data elements that take on discrete set of values, this is the list of values being proposed as a standard set.

- *Business Rules / Coding Guidelines*

The basic rules and guidelines governing the existence and often the use of this data element will be described here. Detail rules regarding when and under what circumstances the data element must be captured will be described by application specific guidelines.

- *Implementation Consideration*

Any other details pertaining to rules of capture, potential documentation requirements and apparent usage scenarios are captured here for future reference.

- *Development Notes*

Details of the standard definition analysis, the prevailing national and international standards that were evaluated and the rationale for any alignment/adaptation to prevailing standards are described in this section.

3. Breast Cancer Screening Subject Area

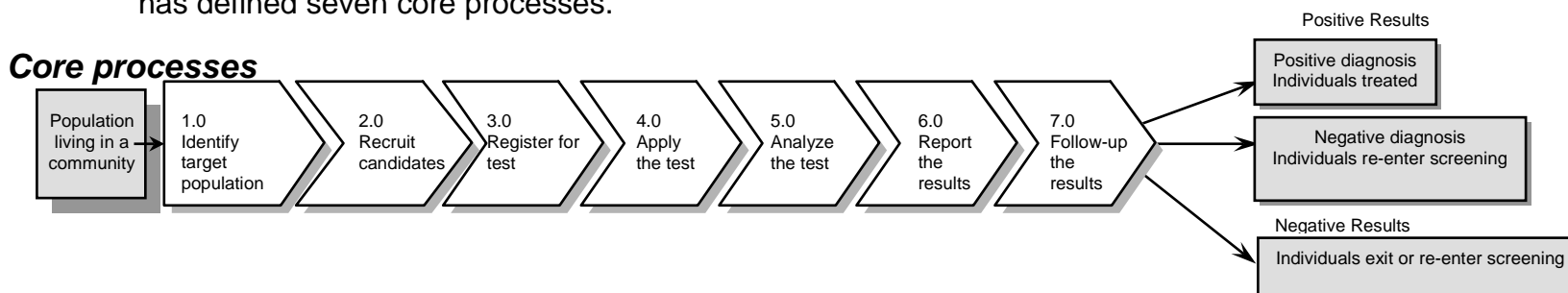
Background

Breast cancer screening (BCS) is a population based preventive health activity, which allows the detection of breast cancer at the early stages of the disease process before the onset of signs and symptoms. The screening program targets asymptomatic women aged 50-69 for screening mammography.

Until recently there has been no single holistic approach to population based breast cancer screening within Alberta. Both the Alberta Cancer Board (ACB) and independent radiologists that are typically members of the Alberta Society of Radiologists (ASR) conduct mammograms for breast cancer screening. The ACB has attempted to implement a population-based program through their *Screen Test* initiative while independent radiologists conduct individual level screening as a result of physician referrals. Since April 1, 1999, women 50-69 years of age may also self refer for screening mammography. As a result, there is no single data repository / application that supports the breast cancer screening program.

In 1999, a Program Design for Breast Cancer Screening was developed to establish a single provincial breast cancer screening program. The design outlines the program goals and stakeholder roles and responsibilities in the delivery of the breast cancer screening program. The stakeholders included Albertan women, Regional Health Authorities (RHA), Alberta Health and Wellness (AH&W), the Alberta Cancer Board (ACB), the Alberta Medical Association, the Alberta Society of Radiologists (ASR) and ASR member radiologists.

The **alberta well/net** Breast Cancer Screening Information System Project has been established to assist the stakeholders in meeting the BCS program requirements. The program has defined seven core processes.



- **identifying the target population** - through several interfaces and the merging of data, a breast cancer screening data base would provide a repository of the target population for the screening program. System interfaces would include:
 - Alberta Health's Central Stakeholder Registry (CSR) system would provide the target population demographic information
 - Alberta Health's CLASS system and the Alberta Cancer Board's *Screen Test* system would provide screening event history for the target population

- Alberta Cancer Board's Cancer Registry system would provide individuals with known cancer
- **recruit candidates** – a web based user interface would support recruitment communication such as letters and postcards to eligible participants.
- **apply the test** – this process refers to the actual screening event provided by the independent radiologists or the ACB. No specific system functionality has been planned to support this business function in the initial release of the application.
- **analyze the test** – this process refers to the review or analysis of the screening test for any abnormal conditions. No specific system functionality has been planned to support this business function in the initial release of the application.
- **report the results** – during this business function, the results of the screening test are reported to the service providers with the necessary follow-up being provided. No specific functionality has been planned to support this business function in the first release of the application.
- **follow-up the results** – during this process two major activities are performed. First, the list of those screened is compared to the list of those recruited. The new breast cancer screening application will provide reports to assist in this process. The system will be capable of producing reminder letters.

alberta wellnet are developing a Privacy Impact Analysis for the proposed information flows.

The BCS application is one component of a generic screening information system that is extended through the development of screening program applications. This generic screening information system reflects the data elements common to all screening programs based on a population based screening business model proposed by Alberta Health and Wellness and approved by Standing Policy Committee.

It is anticipated that future **alberta wellnet** project activity will further enable the Breast Cancer Screening (BCS) Program building on the current BCS project. Any additions to the data standards will be validated using the existing HISCA information standards process.

Note: Currently the Breast Cancer Screening MDS supports the recruitment functions as approved by the ABC Program Interim Implementation Committee in Dec/99

Results of the literature review

In addition to Stakeholders involved in the information requirement definition, two additional data element sources were reviewed and compared to the breast cancer minimum data set contained within this document. These data sources are:

"Canadian Breast Cancer Screening Database - Data Dictionary" and the "consensus" mammography data set that was developed in early December 1998. As future functionality of the breast cancer application is defined, these documents will continue to be used as a quality assurance check.

Business case for the Alberta Health and Wellness system

The overall business goals and objectives of the province-wide population based breast cancer screening program include:

Service Delivery

provide screening mammography to all eligible women aged 50-69;

Improving Health Outcomes

- reduce the mortality rate due to breast cancer in women aged 50-69 By 30% through early detection;
- improve the probability of positive outcomes through earlier interventions such as surgery;
- improve the probability of retaining the breast through earlier interventions;

Customer Satisfaction

improve confidence in cancer detection through consistency of screening, compliance with guidelines and regular monitoring;

improve the capacity for activities of daily living through reduced disease severity due to early intervention;

improve self-image through retention of the breast;

Integration of Information/care

improve the opportunity for collaboration between family physicians and stakeholders such as the ACB by providing a provincial screening registry;

Standardization of Information/Care

facilitate compliance with diagnostic and screening protocols for "best of breed" screening service delivery within the province.

Feasibility and ease or difficulty of implementation

Overall, it should be relatively feasible to implement the proposed minimum data set standard across the health system. The breast cancer screening application will be a centralized web-enabled implementation. Breast cancer screening application users will have access to the application through an internet browser, resulting in no changes to any of their systems.

Impact on privacy, confidentiality and security

A Breast Cancer Screening Privacy Impact Assessment is being developed. This will be submitted for review by the program stakeholders and submitted to the privacy commissioner for review.

A privacy communication tool has been developed to provide the Privacy Commissioner with high level view of the proposed population screening applications such as Breast Cancer Screening. This is in the process of being submitted to the privacy commissioner. It is anticipated any comments from the commissioner's review will be addressed within the BCS privacy impact assessment.

As per Section 36 of the Freedom of Information and Protection of Privacy (FOIP) Act, which refers to the Protection of Personal Information, there are adequate security measures to protect the personal information from unauthorized access or disclosure.

As with the Newborn Registration application, until security standards are established, the Breast Cancer Screening application will include the following security components to protect the personal information from unauthorized access or disclosure:

- An ID and password is required to prove that the particular personal computer has the right to connect to the network resources.
- A mainframe user ID and password are required which authenticates a person to the mainframe application.
- A system activity log will track and provides information on which records were accessed (either updated or viewed) by the users.

Relationship to existing standards and/or legislation

As the information requirements of the BCSP system application were identified, the existing HISCA standards; Stakeholder Basic Demographics Standard and Service Event Data Model were used to align the BCSP minimum data set. In addition, standards defined by ITAC and HL7 version 2.3.1 were also referenced.

Summary of consensus to date

Information requirements for the BCS application were identified through approximately 20 interviews with individual stakeholders and two meetings of the Breast Cancer Screening Information Systems Working Group (ISWG). Stakeholder representation at the ISWG included Alberta Health and Wellness (Health Surveillance Branch, Customer Service and Registration Branch, Office of the Provincial Medical Care Consultant), Alberta Society of Radiologists members, the Alberta Cancer Board and Regional Health Authorities.

Representation from the Regional Health Authorities included the Capital Health Authority, David Thompson Health Authority and Chinook Health Region.

There was unanimous consensus on the need for a single provincial database for population based recruitment.

4. Breast Cancer Screening conceptual model

Stakeholder

A Person or Group of interest to the health system of Alberta or the business of the Alberta's health system. A Stakeholder can assume many roles in the health system including the role of a Recipient and a Provider.

This class contains information about the Stakeholder; information about the Stakeholder's roles and relationships is stored elsewhere. For example, Stakeholder John Smith may be a Provider and a Recipient; the information about his roles is found in the Class Stakeholder Role. He may also be a Family Member; information about this relationship to other Family Members (i.e. to construct the entire family) is found in the Stakeholder Role Relationship class.

Attributes:

- **ULI :**
Unique lifetime identifier assigned to stakeholder.

Group

A collection of people, formal or informal, with distinct characteristics of interest in common. The collection may be comprised of zero or more people. It may be viewed as a singular entity or as a collective, depending on requirements.

Derived from Stakeholder

Organization

A formalized group of people, with a common purpose, of interest to the health system. Like it's super-type 'Group', an Organization can be recognized as a singular instance or as a collective. For example, a Governance Event may define the characteristics (terms of reference) for a new Group and cause it to become a singular instance (formalize it's existence as an Organization).

Includes all Organizations that have received a Service, or may provide a Service to the health system. A key type of Organizations is the business Organization, held together by a business purpose, such as profitably making widgets or providing health services to a particular region. The business Organization actually has 3 components: a grouping of people, a business purpose and an underlying structure (the positions and responsibilities of its members, policies, and procedures etc.).

In the context of screening programs, the organization of interest are the 17 Regional Health Authorities, the Alberta Cancer Board, and Alberta Health & Wellness. This list may change over time.

Derived from Group

Attributes:

- **Organization Name :**
Textual label assigned to organization.
-

Community

A formal or informal group of people with common characteristics that may be geographic, demographic or other.

Derived from Group

Service Recipient

A person or group that receives goods or services from the health system.

Derived from Stakeholder, Stakeholder In A Role

Attributes:

- **Provincial Health Number :**
This is the identifier assigned to a person by a province.
- **Provincial Health Number Type :**
This is a code that identifies the province that assigned the Provincial Health Number to the person.

Health Service Provider

An organization or person responsible for the provision of healthcare services to an individual, or involved in the provision of healthcare related services.

Derived from Stakeholder, Stakeholder In A Role

Attributes:

- **Service Provider ID :**

Event

Information that describes a change in state to a component of interest to the health system and the conditions surrounding the change. It may be the record of something that has already occurred or a reminder describing something that is due to occur. Events may be related to an individual, an organization, a population, or an inanimate object.

Attributes:

- **Start Date :**
The calendar date the event commenced.
- **Start Time :**
The time of day the event commenced.
- **End Date :**
The calendar date the event terminated.
- **End Time :**
The time of day the event terminated.

Health Condition

Summary result derived from a set of health and/or environment measures that permits a health service provider to describe a health and/or environment condition.

Attributes:

- **Diagnosis Code :**
This is a symbol (string) that identifies a health condition.

Example:

784.0 would refer to the real world concept "headache" as defined by ICD9 CM.

- **Diagnosis Code System Identifier :**
Denotes the code system that defined the diagnostic code.

Example ICD9 CM

- **Diagnosis Code System Version :**
Version descriptor defined specifically for the given coding scheme.

Example

v2.3.1

- **Diagnosis Code System Version Effective Date :**
Date the coding scheme became effective.
- **Diagnosis Code System Version Termination Date :**
The end date that this version of the code system is effective.
- **Diagnosis Description :**
A sensible name for the diagnostic code.

Example:

"HEADACHE"

Delivery Site

The geographic or physical point of the specific site where a Service is delivered, along with the attributes and capabilities of that point.

Attributes:

- **Facility ID :**
Unique identifier for a facility where a service was delivered.

Health Service

Health services are provided for the purpose of promoting, protecting, maintaining or improving health. Services represent the interaction between provider and recipient. The Health Service contains information regarding all services and activities (overlap with Activity ?) which may be provided by a program.

Derived from Governance

Attributes:

- **Service Code :**
This is a symbol (string) that identifies a health service.

Example:

784.0 would refer to the real world concept "headache" as defined by ICD9 CM.

- **Service Code System Identifier :**
Denotes the code system that defined the service code.

Example ICD9 CM

- **Service Code System Version :**
Version descriptor defined specifically for the given coding scheme.

Example

v2.3.1

- **Service Code System Version Effective Date :**
Date the coding scheme became effective.
- **Service Code System Version Termination Date :**
- **Service Description :**
A sensible name for the service code.

Example:

"HEADACHE"

Stakeholder In A Role

Defines a stakeholder within a role.

Example:

Health Authority responsible for a screening program - regional program manager.

Attributes:

- **Start Date :**
The first day that the stakeholder is associated with a role.
- **End Date :**
The last day the stakeholder is playing a role.

Health System Role

Defines roles recognized by the health system that participate in events affecting the health of people. Roles are names assigned to groups of responsibilities

Attributes:

- **Health System Role ID :**
Unique label for a health system role.
- **Health System Role Type :**
Textual definition of a health system role.

Address

The location to which mail or goods can be sent to a person, business, or organization.

Derived from Communication Access

Attributes:

- **Address Usage**
Business, Residential etc.
- **Address Type :**
Mailing, Physical, etc.
- **Address Description :**
Street, lock box, rural route and/or general delivery type information, general description of physical location.
- **City Name :**
A geographical location which has a name and operates as a community of stakeholders.
- **Province/State Code :**
A code identifying the applicable country.
- **Postal/Zip Code :**
A code assigned to one or more addresses, required for the mechanized processing of mail.
- **Country Code :**
A code identifying the applicable province, state, territory, etc.

Email

Electronic mail address

Derived from Communication Access

Attributes:

- **Email Address :**
Electronic mail address

Telecom

Telecommunication

Derived from Communication Access

Attributes:

- **Telecom Type :**
The type of information that can be received by the telephone
- **Telecom Usage :**
The purpose for which the phone is used.
- **Telecom Area Code :**
The digits indicating the desired city or area (also known as City Code or Routing Code).
- **Telecom Local Number :**
The digits of the local phone number.
- **Telecom Extension :**
The digits of the extension.
- **Telecom Country Dial Code :**
Additional digits which must be dialed first to cause the call to be other than a standard call within the North American Numbering Plan.

Stakeholder In A Role Relationship

Defines relationships between stakeholders within roles.

Examples: the relationship between the health authority (regional manager) and the system user (field operator).

Attributes:

- **Start Date :**
The first day the stakeholder is related to another stakeholder.
- **End Date :**
The last day the stakeholder is related to another stakeholder.

Communication Access

Method used to communicate with a stakeholder.

Attributes:

- **Start Date :**
The first day that the address, telephone or email address is in effect for a stakeholder.
- **End Date :**
The last day that the address, telephone or email address is in effect for a stakeholder.

Provincial Program Manager

Derived from Stakeholder In A Role

Regional Program Manager

Organization responsible for the development, implementation, coordination and evaluation of disease-specific screening program.

Derived from Stakeholder In A Role

Attributes:

- **RHA ID :**
Regional Health Authority identifier.
(An identification assigned to an organization by a jurisdiction other than a provincial health ministry.)

Governance Event

An event which is intended to establish, change or delete any element of Governance.

Derived from Event

Governance

Any aspect of defining the structure of the intent to affect the health of people.

Screening Program

A screening program is a formalized effort to improve the health of Albertans through preventative measures, usually through early detection.

Derived from Governance

Attributes:

- **Screening Program Name :**
A textual label for a program.

Jurisdiction

The boundary and scope of authority of the persons or group. May be bound by a geographical boundary or a specific domain of influence.

Derived from Governance

Attributes:

- **Start Date :**
The first day that the postal code belongs to the RHA.
- **End Date :**
The last day that the postal code belongs to the RHA.

Eligibility Rule

Factors/criteria defining the rules for eligibility in a program/service.

Attributes:

- **Rule Id :**
Unique identifier for the eligibility rule.
- **Rule Description :**
Textual description of the eligibility rule.
- **Expiry Rule :**
Boolean expression indicating whether the rule is used to terminate the individuals participation in a screening program.
- **Rule Value :**
The quantitative value of the participant rule. An example of a participant rule could be the specification of the minimum age for inclusion in a program as 60, the rule value would contain "60".

- **Rule Value Unit :**
Textual description of the units that the rule value is measured.

For example: years, days, etc.

Program Eligibility

A Program/Service that a Stakeholder is eligible for, along with the factors/criteria satisfied to qualify for it.

Attributes:

- **Start Date :**
The first day that the eligibility rule is in effect.
- **End Date :**
The last day the eligibility rule is in effect.

Field Operator

System user of a screening program.

Derived from Stakeholder In A Role

Attributes:

- **Field Operator ID :**
Unique identifier assigned to the system user.

Program Participation

Attributes:

- **Active :**
Boolean expression specifying the participation status of a screening participant.
- **Next Solicitation Due Date :**
Calendar date identifying the next date to solicit a screening participant.
- **Next Solicitation Type :**
Defines the next solicitation type required for a stakeholder.

Communication Event

Transmission and receipt of information which has a physical record. Describes the nature of the communication along with the form of the submission (e.g. document, memo, magnetic disk, recorded voice message, film, etc.

Derived from Event

Service Request

A communication to the health system asking for the provision of a service to satisfy an identified service need.

Derived from Communication Event

Participation Request

An invitation (verbal or textual) to a service recipient requesting participation in a program.

[Derived from Service Request](#)

Stakeholder Event

Events that change the state of characteristics of persons or groups (stakeholders).

[Derived from Event](#)

Service Event

The provision of a specific Service to a Recipient by a Provider at a Delivery Site during a time period.

[Derived from Stakeholder Event](#)

Screening Event

[Derived from Service Event](#)

Activation Event

Inclusion of a stakeholder into a program.

[Derived from Approval Event](#)

Deactivation Event

Removal of a stakeholder from a program.

[Derived from Approval Event](#)

Person Medical Diagnosis

The recognized state or view of the health and well-being of an individual.

[Attributes:](#)

- **Start Date :**
The first day that the health condition was assessed for the stakeholder.
 - **End Date :**
The last day that the health condition was assessed for the stakeholder.
-

Alert

A notification that an unusual condition has occurred.

[Derived from Communication Event](#)

[Attributes:](#)

- **Text Sent :**
Textual message describing the condition requiring human intervention.
 - **Response from API :**
Textual message describing the resolution of the alert.
-

Approval Event

A response by or to the health system, indicating agreement or consent.

[Derived from Communication Event](#)

Postal Code

Attributes:

- **Postal/Zip Code :**
A code defined by Canada Post (and other national postal services) used to expedite delivery of mail.

Boundary

Attributes:

- **Boundary Id :**
- **Boundary Description :**
- **Start Date :**
- **End Date :**

Person Name

Names held by a person.

Attributes:

- **Prefix :**
The regular or shortened form of the honorific or salutation that precedes the name.
- **First Given Name :**
The first name of the individual.
- **Other Given Name :**
The other given name of an individual.
- **Surname :**
The full surname or family name of the individual.
- **Suffix :**
The regular or shortened form of a person's lineage.
- **Designation :**
The regular or shortened form of a person's education and/or profession.
- **Person Name Type :**
The name type for a person.

Example: legal, preferred, nickname

Person

A human being, alive or not, of interest to the health system.

The type of a person (Albertan vs. Non-Albertan) has implication in registration and eligibility information requirements.

Derived from Stakeholder

Attributes:

- **Birth Date :**
The calendar date on which a person was born as reported upon registration.
- **Gender :**
A code depicting the biological sex of the person as reported upon registration.
- **Death Date :**
The calendar date on which person is pronounced 'deceased' .
- **Death Indicator :**

5. Breast Cancer Screening Data Element List

Stakeholder

- ULI :

Email

- Email Address :

Organization

- Organization Name :

Telecom

- Telecom Type :
- Telecom Usage :
- Telecom Area Code :
- Telecom Local Number :
- Telecom Extension :
- Telecom Country Dial Code :

Service Recipient

- Provincial Health Number :
- Provincial Health Number Type :

Stakeholder In A Role Relationship

- Start Date :
- End Date :

Health Service Provider

- Service Provider ID :

Communication Access

- Start Date :
- End Date :

Event

- Start Date :
- Start Time :
- End Date :
- End Time :

Regional Program Manager

- RHA ID :

Health Condition

- Diagnosis Code :
- Diagnosis Code System Identifier :
- Diagnosis Code System Version :
- Diagnosis Code System Version Effective Date :
- Diagnosis Code System Version Termination Date :
- Diagnosis Description :

Screening Program

- Screening Program Name :

Delivery Site

- Facility ID :

Jurisdiction

- Start Date :
- End Date :

Health Service

- Service Code :
- Service Code System Identifier :
- Service Code System Version :
- Service Code System Version Effective Date :
- Service Code System Version Termination Date :
- Service Description :

Eligibility Rule

- Rule Id :
- Rule Description :
- Expiry Rule :
- Rule Value :
- Rule Value Unit :

Stakeholder In A Role

- Start Date :
- End Date :

Program Eligibility

- Start Date :
- End Date :

Health System Role

- Health System Role ID :
- Health System Role Type :

Field Operator

- Field Operator ID :

Address

- Address Usage :
- Address Type :

Program Participation

- Active :
- Next Solicitation Due Date :

- Address Description :
- City Name :
- Province/State Code :
- Postal/Zip Code :
- Country Code :
- Next Solicitation Type :

Person Medical Diagnosis

- Start Date :
- End Date :

Alert

- Text Sent :
- Response from API :

Postal Code

- Postal/Zip Code :

Boundary

- Boundary Id :
- Boundary Description :
- Start Date :
- End Date :

Person Name

- Prefix :
- First Given Name :
- Other Given Name :
- Surname :
- Suffix :
- Designation :
- Person Name Type :

Person

- Birth Date :
- Gender :
- Death Date :
- Death Indicator :

6. Breast Cancer Screening Data Element Standards

Cluster Name:	Alert		
Version:	0		
Status:	Draft	Date Revised	
Standard Category:	Information Standard	Adopted[A]/Rejected[R]	
Standard Sub-category:	Data Standard	Date Adopted/Rejected	
Definition:	A notification that an unusual condition has occurred.		
Component Elements:	<ul style="list-style-type: none">• Alert Response From API• Alert Text Sent• Field Operator ID		
Requirement for Standard:	Used for follow-up on unusual conditions.		
Development Notes:	Reference:	AHEAD	
	Element:	Communication Event	

Health Information Standards Committee of Alberta
 Breast Cancer Screening Minimum Data Set

Element Name:	Alert Response From API	
Cluster Name:	Alert	
Version:	0	
Status:	Draft	Date Revised
Standard Category:	Information Standard	Adopted[A]/Rejected[R]
Standard Sub-category:	Data Standard	Date Adopted/Rejected
Definition:	Textual message describing the resolution of the alert.	
Storage Format:	Alphanumeric : 2000	
Presentation/Display Format:		
Requirement for Standard:	Used for alert follow-ups.	
Valid Values:		
Business Rules / Coding Guidelines:		
Implementation Considerations:		
Development Notes:	Reference:	AHEAD
	Element:	Communication Event

Health Information Standards Committee of Alberta
Breast Cancer Screening Minimum Data Set

Element Name:	Alert Text Sent	
Cluster Name:	Alert	
Version:	0	
Status:	Draft	Date Revised
Standard Category:	Information Standard	Adopted[A]/Rejected[R]
Standard Sub-category:	Data Standard	Date Adopted/Rejected
Definition:	Textual message describing the condition requiring human intervention.	
Storage Format:	Alphanumeric : 2000	
Presentation/Display Format:		
Requirement for Standard:	Used for follow-up on unusual conditions for screening events.	
Valid Values:		
Business Rules / Coding Guidelines:		
Implementation Considerations:		
Development Notes:	Reference:	AHEAD
	Element:	Communication Event

Element Name:	Field Operator ID	
Cluster Name:	Alert	
Version:	0	
Status:	Draft	Date Revised
Standard Category:	Information Standard	Adopted[A]/Rejected[R]
Standard Sub-category:	Data Standard	Date Adopted/Rejected
Definition:	Unique identifier of the field operator.	
Storage Format:	Alphanumeric : 15	
Presentation/Display Format:		
Requirement for Standard:	Used for follow-up on unusual conditions for screening events.	
Valid Values:		
Business Rules / Coding Guidelines:		
Implementation Considerations:	Field operator is a type of system user role.	
Development Notes:	Standard:	Stakeholder Basic Demographic Standard
	Element:	Service Provider Identifier

Cluster Name:	Boundary		
Version:	0		
Status:	Draft		Date Revised
Standard Category:	Information Standard	Adopted[A]/Rejected[R]	
Standard Sub-category:	Data Standard	Date Adopted/Rejected	
Definition:	A set of geographic parameters used by the health system to identify groupings of locations.		
Component Elements:	<ul style="list-style-type: none"> • Boundary Id • Boundary Description • Boundary Start Date • Boundary End Date • Jurisdiction 		
Requirement for Standard:	Used to group screening participants within a boundary i.e. RHA		
Development Notes:	Reference:	AHEAD	
	Element:	Boundary	

Health Information Standards Committee of Alberta
Breast Cancer Screening Minimum Data Set

Element Name:	Boundary Id	
Cluster Name:	Boundary	
Version:	0	
Status:	Draft	Date Revised
Standard Category:	Information Standard	Adopted[A]/Rejected[R]
Standard Sub-category:	Data Standard	Date Adopted/Rejected
Definition:	Unique label for the boundary	
Storage Format:	Alphanumeric 15	
Presentation/Display Format:		
Requirement for Standard:	Used to group screening participants within a boundary i.e. RHA	
Valid Values:		
Business Rules / Coding Guidelines:		
Implementation Considerations:		
Development Notes:	Reference:	AHEAD
	Element:	Boundary

Health Information Standards Committee of Alberta
 Breast Cancer Screening Minimum Data Set

Element Name:	Boundary Description	
Cluster Name:	Boundary	
Version:	0	
Status:	Draft	Date Revised
Standard Category:	Information Standard	Adopted[A]/Rejected[R]
Standard Sub-category:	Data Standard	Date Adopted/Rejected
Definition:	Textual definition of the boundary	
Storage Format:	Alphanumeric 80	
Presentation/Display Format:		
Requirement for Standard:	Used to group screening participants within a boundary i.e. RHA	
Valid Values:		
Business Rules / Coding Guidelines:		
Implementation Considerations:		
Development Notes:	Reference:	AHEAD
	Element:	Boundary

Health Information Standards Committee of Alberta
Breast Cancer Screening Minimum Data Set

Element Name:	Boundary Start Date	
Cluster Name:	Boundary	
Version:	0	
Status:	Draft	Date Revised
Standard Category:	Information Standard	Adopted[A]/Rejected[R]
Standard Sub-category:	Data Standard	Date Adopted/Rejected
Definition:	The first day the boundary is effect.	
Storage Format:	Date: 8	
Presentation/Display Format:	YYYYMMDD	
Requirement for Standard:	Used to group screening participants within a boundary i.e. RHA	
Valid Values:	Valid calendar date.	
Business Rules / Coding Guidelines:		
Implementation Considerations:		
Development Notes:	Reference:	AHEAD
	Element:	Boundary

Health Information Standards Committee of Alberta
 Breast Cancer Screening Minimum Data Set

Element Name:	Boundary End Date	
Cluster Name:	Boundary	
Version:	0	
Status:	Draft	Date Revised
Standard Category:	Information Standard	Adopted[A]/Rejected[R]
Standard Sub-category:	Data Standard	Date Adopted/Rejected
Definition:	The last day the boundary is in effect	
Storage Format:	Date: 8	
Presentation/Display Format:	YYYYMMDD	
Requirement for Standard:	Used to group screening participants within a boundary i.e. RHA	
Valid Values:	Valid calendar date.	
Business Rules / Coding Guidelines:		
Implementation Considerations:		
Development Notes:	Reference:	AHEAD
	Element:	Boundary

Compound Element	
Name:	Jurisdiction
Cluster Name	Boundary
Version:	0
Status:	Draft
Standard Category:	Information Standard
Standard Sub-category:	Data Standard
	Date Revised Adopted[A]/Rejected[R] Date Adopted/Rejected
Definition:	The boundary and scope of authority of the persons or group. May be bound by a geographical boundary or a specific domain of influence
Component Elements:	<ul style="list-style-type: none"> • Jurisdiction End Date • Jurisdiction Start Date
Requirement for Standard:	Used to group screening participants within a boundary i.e. RHA
Development Notes:	Reference: AHEAD Element: Jurisdiction

Element Name:	Jurisdiction End Date	
Compound Element Name:	Jurisdiction	
Version:	0	Date Revised
Status:	Draft	Adopted[A]/Rejected[R]
Standard Category:	Information Standard	Date Adopted/Rejected
Standard Sub-category:	Data Standard	
Definition:	The last day that the postal code is in the rha boundary.	
Storage Format:	Date : 8	
Presentation/Display Format:	YYYYMMDD	
Requirement for Standard:	Used to group screening participants within a boundary i.e. RHA	
Valid Values:	Valid calendar date	
Business Rules / Coding Guidelines:		
Implementation Considerations:		
Development Notes:	Reference:	AHEAD
	Element:	Jurisdiction

Element Name:	Jurisdiction Start Date	
Compound Element		
Name:	Jurisdiction	
Version:	0	
Status:	Draft	Date Revised
Standard Category:	Information Standard	Adopted[A]/Rejected[R]
Standard Sub-category:	Data Standard	Date Adopted/Rejected
Definition:	The first day that the postal code is in the rha boundary.	
Storage Format:	Date : 8	
Presentation/Display Format:	YYYYMMDD	
Requirement for Standard:	Used to group screening participants within a boundary i.e. RHA	
Valid Values:	Valid calendar date	
Business Rules / Coding Guidelines:		
Implementation Considerations:		
Development Notes:	Reference:	AHEAD
	Element:	Jurisdiction

Cluster Name:	Communication Access		
Version:	0		
Status:	Draft		Date Revised
Standard Category:	Information Standard	Adopted[A]/Rejected[R]	
Standard Sub-category:	Data Standard	Date Adopted/Rejected	
Definition:	Method used to communicate with a stakeholder.		
Component Elements:	<ul style="list-style-type: none"> • Communication Access Start Date • Communication Access End Date • Address • Telecom • Email 		
Requirement for Standard:	As communication with stakeholders is a vital process in the health system, consistent and standard way of specifying an address, telecommunications, and email information is not only necessary but required.		
Development Notes:			

Element Name:	Communication Access Start Date		
Cluster Name:	Communication Access		
Version:	0		
Status:	Draft	Date Revised	
Standard Category:	Information Standard	Adopted[A]/Rejected[R]	
Standard Sub-category:	Data Standard	Date Adopted/Rejected	
Definition:	The first day that the address, telephone or email address is in effect for a stakeholder.		
Storage Format:	Date : 8		
Presentation/Display Format:	YYYYMMDD		
Requirement for Standard:			
Valid Values:	Valid calendar date		
Business Rules / Coding Guidelines:	As communication with stakeholders is a vital process in the health system, consistent and standard way of specifying an address, telecommunications, and email information is not only necessary but required.		
Implementation Considerations:			
Development Notes:			

Health Information Standards Committee of Alberta
 Breast Cancer Screening Minimum Data Set

Element Name:	Communication Access End Date		
Cluster Name:	Communication Access		
Version:	0		
Status:	Draft	Date Revised	
Standard Category:	Information Standard	Adopted[A]/Rejected[R]	
Standard Sub-category:	Data Standard	Date Adopted/Rejected	
Definition:	The last day that the address, telephone or email address is in effect for a stakeholder.		
Storage Format:	Date : 8		
Presentation/Display Format:	YYYYMMDD		
Requirement for Standard:			
Valid Values:	Valid calendar date		
Business Rules / Coding Guidelines:	As communication with stakeholders is a vital process in the health system, consistent and standard way of specifying an address, telecommunications, and email information is not only necessary but required.		
Implementation Considerations:			
Development Notes:			

Compound Data	
Element Name:	Address
Cluster Name	Communication Access
Version:	0
Status:	Draft
Standard Category:	Information Standard
Standard Sub-category:	Data Standard
Definition:	An address is a place where a person or organization can be located or communicated with via postal services. Street, lock box, rural route and/or general delivery type information, general description of physical location.
Component Elements:	<ul style="list-style-type: none"> • Address Description • City Name • Province/State Code • Postal/Zip Code • Country Code • Address Type • Address Usage
Requirement for Standard:	As communication with stakeholders is a vital process in the health system, consistent and standard way of specifying an address is not only necessary but required. The address is the location at which the screening coordinator can send mail and/or the location where the screening recipient normally resides.
Development Notes:	

Element Name:	Address Description	
Compound Element Name:	Address	
Version:	0	Date Revised
Status:	Draft	Adopted[A]/Rejected[R]
Standard Category:	Information Standard	Date Adopted/Rejected
Standard Sub-category:	Data Standard	
Definition:	Street, lock box, rural route and/or general delivery type information, general description of physical location. The address description identifies the street or mailing address of the screening participant	
Storage Format:	Alphanumeric : 140	
Presentation/Display Format:		
Requirement for Standard:	As communication with stakeholders is a vital process in the health system, consistent and standard way of specifying an address is not only necessary but required.	
Valid Values:	N/A	
Business Rules / Coding Guidelines:	Must be at least four characters in length. Default to the Newborn parent address.	
Implementation Considerations:	4 units of 35 characters	
Development Notes:	Standard:	Stakeholder Basic Demographics Standard
	Element:	Street Address

Health Information Standards Committee of Alberta
 Breast Cancer Screening Minimum Data Set

Element Name:	City Name	
Compound Element Name:	Address	
Version:	0	Date Revised
Status:	Draft	Adopted[A]/Rejected[R]
Standard Category:	Information Standard	Date Adopted/Rejected
Standard Sub-category:	Data Standard	
Definition:	A geographical location which has a name and operates as a community of stakeholders.	
Storage Format:	Alphanumeric : 60	
Presentation/Display Format:		
Requirement for Standard:	As communication with stakeholders is a vital process in the health system, consistent and standard way of specifying an address is not only necessary but required.	
Valid Values:	N/A	
Business Rules / Coding Guidelines:	Must be a valid city/town/village name	
Implementation Considerations:		
Development Notes:	Standard:	Stakeholder Basic Demographics Standard
	Element:	City Name

Health Information Standards Committee of Alberta
Breast Cancer Screening Minimum Data Set

Element Name:	Province/State Code	
Compound Element Name:	Address	
Version:	0	Date Revised
Status:	Draft	Adopted[A]/Rejected[R]
Standard Category:	Information Standard	Date Adopted/Rejected
Standard Sub-category:	Data Standard	
Definition:	A code identifying the applicable province, state, territory, etc.	
Storage Format:	Alpha only : 3	
Presentation/Display Format:	AAA	
Requirement for Standard:	As communication with stakeholders is a vital process in the health system, consistent and standard way of specifying an address is not only necessary but required.	
Valid Values:	AB - Alberta BC - British Columbia MB - Manitoba NB - New Brunswick NF - Newfoundland NS - Nova Scotia NT - Northwest Territories NU - Nunavut ON - Ontario PE - Prince Edward Island QC - Quebec SK - Saskatchewan YT - Yukon	
Business Rules / Coding Guidelines:	Must be a valid Province Code.	
Implementation Considerations:	Since the breast cancer application is limited to Alberta women, only Canadian Province/Territory codes are listed as valid values (for future expansion).	
Development Notes:	Standard:	Stakeholder Basic Demographics Standard
	Element:	Province/State Code

Element Name:	Postal/Zip Code	
Compound Element Name:	Address	
Version:	0	Date Revised
Status:	Draft	Adopted[A]/Rejected[R]
Standard Category:	Information Standard	Date Adopted/Rejected
Standard Sub-category:	Data Standard	
Definition:	A code assigned to one or more addresses, required for the mechanized processing of mail.	
Storage Format:	Alphanumeric : 12	
Presentation/Display Format:	ANA NAN	
Requirement for Standard:	As communication with stakeholders is a vital process in the health system, consistent and standard way of specifying an address is not only necessary but required.	
Valid Values:	Valid postal codes for Canada are contained in a table compiled and published by Canada Post.	
Business Rules / Coding Guidelines:	Must meet Canadian postal code format of A9A9A9; If "ID Type Code" is "OC" (Out-of-Country) then postal code is optional, otherwise the postal code will be expected and validated.	
Implementation Considerations:	Since the breast cancer screening application is limited to Alberta women, only Canadian Postal codes are allowed as valid values.	
Development Notes:	Standard:	Stakeholder Basic Demographics Standard
	Element:	Postal/Zip Code

Element Name:	Country Code	
Compound Element Name:	Address	
Version:	0	Date Revised
Status:	Draft	Adopted[A]/Rejected[R]
Standard Category:	Information Standard	Date Adopted/Rejected
Standard Sub-category:	Data Standard	
Definition:	A code identifying the applicable country.	
Storage Format:	Alpha only : 2	
Presentation/Display Format:		
Requirement for Standard:	As communication with stakeholders is a vital process in the health system, consistent and standard way of specifying an address is not only necessary but required.	
Valid Values:	ISO 3166 Country Codes A2	
Business Rules / Coding Guidelines:	Must be a valid country code.	
Implementation Considerations:		
Development Notes:	Standard:	Stakeholder Basic Demographics Standard
	Element:	Country Code

Element Name:	Address Type		
Compound Element Name:	Address		
Version:	0	Date Revised	
Status:	Draft	Adopted[A]/Rejected[R]	
Standard Category:	Information Standard	Date Adopted/Rejected	
Standard Sub-category:	Data Standard		
Definition:	Mailing, Physical, etc.		
Storage Format:	Alpha only : 4		
Presentation/Display Format:			
Requirement for Standard:	As communication with stakeholders is a vital process in the health system, consistent and standard way of specifying an address is not only necessary but required.		
Valid Values:	MAIL - Mailing PHYS - Physical		
Business Rules / Coding Guidelines:			
Implementation Considerations:			
Development Notes:			

Element Name:	Address Usage		
Compound Element Name:	Address		
Version:	0		
Status:	Draft	Date Revised	
Standard Category:	Information Standard	Adopted[A]/Rejected[R]	
Standard Sub-category:	Data Standard	Date Adopted/Rejected	
Definition:	A classification of the address The address type will indicate whether the address is a business address or a residential address.		
Storage Format:	Alpha only : 4		
Presentation/Display Format:	AAAA		
Requirement for Standard:	As communication with stakeholders is a vital process in the health system, consistent and standard way of specifying an address is not only necessary but required.		
Valid Values:	BUSN HOME		
Business Rules / Coding Guidelines:			
Implementation Considerations:			
Development Notes:			

Compound Data	
Element Name:	Telecom
Cluster Name	Communication Access
Version:	0
Status:	Draft
Standard Category:	Information Standard
Standard Sub-category:	Data Standard
Definition:	Telecommunication information for a stakeholder.
Component Elements:	<ul style="list-style-type: none"> • Telecom Area Code • Telecom Country Dial Code • Telecom Extension • Telecom Local Number
Requirement for Standard:	As communication with stakeholders is a vital process in the health system, consistent and standard way of specifying an telephone is not only necessary but required.
Development Notes:	Standard: Stakeholder Basic Demographic Data Standard Element: Telecommunication Information

Element Name:	Telcom Area Code		
Compound Element Name:	Telcom		
Version:	0		
Status:	Draft		
Standard Category:	Information Standard	Date Revised	Adopted[A]/Rejected[R]
Standard Sub-category:	Data Standard	Date Adopted/Rejected	
Definition:	A code that further subdivides an international telecommunication zone into unique areas within zone, used to expedite the routing of telecommunication message to the desired place within the zone.		
Storage Format:	Alphanumeric : 4		
Presentation/Display Format:			
Requirement for Standard:	As communication with stakeholders is a vital process in the health system, consistent and standard way of specifying a telephone is not only necessary but required.		
Valid Values:			
Business Rules / Coding Guidelines:			
Implementation Considerations:			
Development Notes:	Standard:	Stakeholder Basic Demographics Standard	
	Element:	Area Code	
	Area code is sometimes referred to as the routing code.		

Element Name:	Telcom Country Dial Code	
Compound Element Name:	Telcom	
Version:	0	
Status:	Draft	Date Revised
Standard Category:	Information Standard	Adopted[A]/Rejected[R]
Standard Sub-category:	Data Standard	Date Adopted/Rejected
Definition:	A code defined by telecommunication world bodies, and used to expedite the routing of telecommunication messages to the desired place of the world.	
Storage Format:	Alphanumeric : 3	
Presentation/Display Format:		
Requirement for Standard:	As communication with stakeholders is a vital process in the health system, consistent and standard way of specifying a telephone is not only necessary but required.	
Valid Values:	<p>Valid country dial codes are contained in a table in Appendix D of the Stakeholder Demographics Standard. Unlike the ISO international country codes table, this table does not contain unique codes for all countries. Codes are assigned based on telecommunication zones as defined by the international telecommunication bodies.</p> <p>For instance, several countries in the Caribbean share the same international country codes for telecommunication purposes.</p>	
Business Rules / Coding Guidelines:		
Implementation Considerations:		
Development Notes:	Standard:	Stakeholder Basic Demographics Standard
	Element:	Country Dial Code

Element Name:	Telcom Extension Number		
Compound Element Name:	Telcom		
Version:	0		
Status:	Draft	Date Revised	
Standard Category:	Information Standard	Adopted[A]/Rejected[R]	
Standard Sub-category:	Data Standard	Date Adopted/Rejected	
Definition:	A code that assigned to individual telephone units collectively sharing the same router.		
Storage Format:	Alphanumeric : 7		
Presentation/Display Format:			
Requirement for Standard:	As communication with stakeholders is a vital process in the health system, consistent and standard way of specifying a telephone is not only necessary but required.		
Valid Values:			
Business Rules / Coding Guidelines:			
Implementation Considerations:			
Development Notes:	Standard:	Stakeholder Basic Demographics Standard	
	Element:	Extension Number	

Element Name:	Telcom Local Number		
Compound Element Name:	Telcom		
Version:	0		
Status:	Draft	Date Revised	
Standard Category:	Information Standard	Adopted[A]/Rejected[R]	
Standard Sub-category:	Data Standard	Date Adopted/Rejected	
Definition:	The number assigned to a telephone subscriber (unique within an area), to make connections to their telephone		
Storage Format:	Alphanumeric : 10		
Presentation/Display Format:			
Requirement for Standard:	As communication with stakeholders is a vital process in the health system, consistent and standard way of specifying a telephone is not only necessary but required.		
Valid Values:			
Business Rules / Coding Guidelines:			
Implementation Considerations:			
Development Notes:	Standard:	Stakeholder Basic Demographic Standards	
	Element:	Local Phone Number	

Health Information Standards Committee of Alberta
 Breast Cancer Screening Minimum Data Set

Element Name:	Email Address	
Cluster Name:	Communication Access	
Version:	0	
Status:	Draft	Date Revised
Standard Category:	Information Standard	Adopted[A]/Rejected[R]
Standard Sub-category:	Data Standard	Date Adopted/Rejected
Definition:	Electronic mail address.	
Storage Format:	Alphanumeric : 150	
Presentation/Display Format:		
Requirement for Standard:		
Valid Values:	N/A	
Business Rules / Coding Guidelines:	Optional	
Implementation Considerations:		
Development Notes:	Standard:	Stakeholder Basic Demographic Standards
	Element:	Email

Health Information Standards Committee of Alberta
 Breast Cancer Screening Minimum Data Set

Cluster Name:	Screening Event		
Version:	0		
Status:	Draft		Date Revised
Standard Category:	Information Standard	Adopted[A]/Rejected[R]	
Standard Sub-category:	Data Standard	Date Adopted/Rejected	
Definition:	A screen performed by a health service provider upon a screening recipient at a delivery site during a period of time. The screening test a individuals undergo through designated professionals and sites		
Component Elements:	<ul style="list-style-type: none"> • Facility ID • Service Provider ID • Provincial Health Number • Provincial Health Number Type • Screening Event Start Date • Screening Event Start Time • Screening Event End Date • Screening Event End Time • Health Service 		
Requirement for Standard:	Screening events, as type of service events, are of interest to different people for different reasons. However, service events must be recorded consistently if they are to be used for different decision making processes, without having to collect the same data many times.		
Development Notes:	Standard:	Service Event Data Model	

Element Name:	Facility ID	
Cluster Name:	Screening Event	
Version:	0	
Status:	Draft	Date Revised
Standard Category:	Information Standard	Adopted[A]/Rejected[R]
Standard Sub-category:	Data Standard	Date Adopted/Rejected
Definition:	Unique identifier for the delivery site.	
Storage Format:	Numeric : 15	
Presentation/Display Format:		
Requirement for Standard:	The location where health services were delivered is considered core information for a service event.	
Valid Values:		
Business Rules / Coding Guidelines:	Mandatory	
Implementation Considerations:		
Development Notes:	Reference:	Alignment with AHEAD Delivery Site

Element Name:	Service Provider ID	
Cluster Name:	Screening Event	
Version:	0	
Status:	Draft	Date Revised
Standard Category:	Information Standard	Adopted[A]/Rejected[R]
Standard Sub-category:	Data Standard	Date Adopted/Rejected
Definition:	Unique identifier for a service provider.	
Storage Format:	Alphanumeric : 15	
Presentation/Display Format:		
Requirement for Standard:	Service provider information is considered core information for a service event.	
Valid Values:		
Business Rules / Coding Guidelines:	Mandatory	
Implementation Considerations:		
Development Notes:	Standard:	Stakeholder Basic Demographic Standard
	Element:	Service Provider Identifier

Health Information Standards Committee of Alberta
 Breast Cancer Screening Minimum Data Set

Element Name:	Provincial Health Number	
Cluster Name:	Screening Event	
Version:	0	
Status:	Draft	Date Revised
Standard Category:	Information Standard	Adopted[A]/Rejected[R]
Standard Sub-category:	Data Standard	Date Adopted/Rejected
Definition:	This is the identifier assigned to a person by a province.	
Storage Format:	Alphanumeric : 15	
Presentation/Display Format:		
Requirement for Standard:	Service recipient information is considered core information for a service event.	
Valid Values:		
Business Rules / Coding Guidelines:	Mandatory	
Implementation Considerations:		
Development Notes:	Standard:	Stakeholder Basic Demographics Standard
	Element:	Provincial Health Number

Health Information Standards Committee of Alberta
Breast Cancer Screening Minimum Data Set

Element Name:	Provincial Health Number Type	
Cluster Name:	Screening Event	
Version:	0	
Status:	Draft	Date Revised
Standard Category:	Information Standard	Adopted[A]/Rejected[R]
Standard Sub-category:	Data Standard	Date Adopted/Rejected
Definition:	This is a code that identifies the province that assigned the Provincial Health Number to the service receipt.	
Storage Format:	Alpha only : 2	
Presentation/Display Format:		
Requirement for Standard:	Required to identify which province assigned the Provincial Health Number	
Valid Values:	The values of this code are the valid province codes assigned by Canada Post.	
	AB	- Alberta
	BC	- British Columbia OOP Health Number
	MB	- Manitoba OOP Health Number
	NB	- New Brunswick OOP Health Number
	NF	- Newfoundland OOP Health Number
	NS	- Nova Scotia OOP Health Number
	NT	- Northwest Territories OOP Health Number
	NU	- Nunavut OOP Health Number
	ON	- Ontario OOP Health Number
	PE	- Prince Edward Island OOP Health Number
	QC	- Quebec OOP Health Number
	SK	- Saskatchewan OOP Health Number
	YT	- Yukon Territory OOP Health Number
	(OOP means 'out-of-province')	
Business Rules / Coding Guidelines:		
Implementation Considerations:		
Development Notes:	Standard:	Stakeholder Basic Demographics Standard
	Element:	Provincial Health Number

Element Name:	Screening Event Start Date		
Cluster Name:	Screening Event		
Version:	0		
Status:	Draft	Date Revised	
Standard Category:	Information Standard	Adopted[A]/Rejected[R]	
Standard Sub-category:	Data Standard	Date Adopted/Rejected	
Definition:	The calendar date the screening event commenced.		
Storage Format:	Date : 8		
Presentation/Display Format:	YYYYMMDD		
Requirement for Standard:	Alignment with AHEAD Event		
Valid Values:	Valid calendar day.		
Business Rules / Coding Guidelines:			
Implementation Considerations:			
Development Notes:	Standard:	Service Event Data Model	
	Element:	Service Event Start Date	

Compound Element Name:	Screening Event Start Time		
Cluster Name:	Screening Event		
Version:	0		
Status:	Draft	Date Revised	
Standard Category:	Information Standard	Adopted[A]/Rejected[R]	
Standard Sub-category:	Data Standard	Date Adopted/Rejected	
Definition:	The time of day the event commenced.		
Requirement for Standard:	When a health service was delivered is considered core information for a service event.		
Component Elements:	<ul style="list-style-type: none"> • Hour N2 • Minute N2 • Second N2 		
Business Rules / Coding Guidelines:			
Implementation Considerations:			
Development Notes:	Standard: Service Event Data Model Element: Service Event Start Time Standard: ITAC Data Standards Element: Time Reference: HL7 Standard		

Element Name:	Hour		
Compound Element Name:	Screening Event Start Time		
Version:	0		
Status:	Draft	Date Revised	
Standard Category:	Information Standard	Adopted[A]/Rejected[R]	
Standard Sub-category:	Data Standard	Date Adopted/Rejected	
Definition:	The hours portion of time.		
Storage Format:	Numeric : 2		
Presentation/Display Format:	HH:MM:SS		
Requirement for Standard:	When a health service was delivered is considered core information for a service event.		
Valid Values:	Two digit number from 00 to 23		
Business Rules / Coding Guidelines:	Mandatory		
Implementation Considerations:	Use of the "time" or a "date/time" data-type provided by all DBMSs and many other software products is acceptable provided the values can be input and output in the format defined by this standard.		
Development Notes:	Standard: Service Event Data Model Element: Service Event Start Time Standard: ITAC Data Standards Element: Time Reference: HL7 Standard		

Element Name:	Minute		
Compound Element Name:	Screening Event Start Time		
Version:	0		
Status:	Draft	Date Revised	
Standard Category:	Information Standard	Adopted[A]/Rejected[R]	
Standard Sub-category:	Data Standard	Date Adopted/Rejected	
Definition:	The minutes portion of time.		
Storage Format:	Numeric : 2		
Presentation/Display Format:	HH:MM:SS		
Requirement for Standard:	When a health service was delivered is considered core information for a service event.		
Valid Values:	Two digit number from 00 to 59		
Business Rules / Coding Guidelines:	Mandatory		
Implementation Considerations:	Use of the "time" or a "date/time" data-type provided by all DBMSs and many other software products is acceptable provided the values can be input and output in the format defined by this standard.		
Development Notes:	Standard:	Service Event Data Model	
	Element:	Service Event Start Time	
	Standard:	ITAC Data Standards	
	Element:	Time	
	Reference:	HL7 Standard	

Element Name:	Second		
Compound Element Name:	Screening Event Start Time		
Version:	0		
Status:	Draft	Date Revised	
Standard Category:	Information Standard	Adopted[A]/Rejected[R]	
Standard Sub-category:	Data Standard	Date Adopted/Rejected	
Definition:	The seconds portion of time.		
Storage Format:	Numeric : 2		
Presentation/Display Format:	HH:MM:SS		
Requirement for Standard:	When a health service was delivered is considered core information for a service event.		
Valid Values:	Two digit number from 00 to 59		
Business Rules / Coding Guidelines:	Optional		
Implementation Considerations:	Use of the "time" or a "date/time" data-type provided by all DBMSs and many other software products is acceptable provided the values can be input and output in the format defined by this standard.		
Development Notes:	Standard:	Service Event Data Model	
	Element:	Service Event Start Time	
	Standard:	ITAC Data Standards	
	Element:	Time	
	Reference:	HL7 Standard	

Element Name:	Screening Event End Date		
Cluster Name:	Screening Event		
Version:	0		
Status:	Draft	Date Revised	
Standard Category:	Information Standard	Adopted[A]/Rejected[R]	
Standard Sub-category:	Data Standard	Date Adopted/Rejected	
Definition:	The calendar date the Screening event terminated.		
Storage Format:	Date : 8		
Presentation/Display Format:	YYYYMMDD		
Requirement for Standard:	Alignment with AHEAD Event		
Valid Values:	Valid calendar day.		
Business Rules / Coding Guidelines:			
Implementation Considerations:			
Development Notes:	Standard:	Service Event Data Model	
	Element:	Service Event End Date	

Compound Element Name:	Screening Event End Time	
Cluster Name:	Screening Event	
Version:	0	
Status:	Draft	Date Revised
Standard Category:	Information Standard	Adopted[A]/Rejected[R]
Standard Sub-category:	Data Standard	Date Adopted/Rejected
Definition:	The time of day the event completed.	
Requirement for Standard:	When a health service was delivered is considered core information for a service event.	
Component Elements:	<ul style="list-style-type: none"> • Hour N2 • Minute N2 • Second N2 	
Business Rules / Coding Guidelines:		
Implementation Considerations:		
Development Notes:	Standard: Service Event Data Model Element: Service Event Start Time Standard: ITAC Data Standards Element: Time Reference: HL7 Standard	

Element Name:	Hour	
Compound Element Name:	Screening Event End Time	
Version:	0	
Status:	Draft	Date Revised
Standard Category:	Information Standard	Adopted[A]/Rejected[R]
Standard Sub-category:	Data Standard	Date Adopted/Rejected
Definition:	The hours portion of time.	
Storage Format:	Numeric : 2	
Presentation/Display Format:	HH:MM:SS	
Requirement for Standard:	When a health service was delivered is considered core information for a service event.	
Valid Values:	Two digit number from 00 to 23	
Business Rules / Coding Guidelines:	Mandatory	
Implementation Considerations:	Use of the "time" or a "date/time" data-type provided by all DBMSs and many other software products is acceptable provided the values can be input and output in the format defined by this standard.	
Development Notes:	Standard: Service Event Data Model Element: Service Event Start Time Standard: ITAC Data Standards Element: Time Reference: HL7 Standard	

Element Name:	Minute		
Compound Element Name:	Screening Event End Time		
Version:	0		
Status:	Draft	Date Revised	
Standard Category:	Information Standard	Adopted[A]/Rejected[R]	
Standard Sub-category:	Data Standard	Date Adopted/Rejected	
Definition:	The minutes portion of time.		
Storage Format:	Numeric : 2		
Presentation/Display Format:	HH:MM:SS		
Requirement for Standard:	When a health service was delivered is considered core information for a service event.		
Valid Values:	Two digit number from 00 to 59		
Business Rules / Coding Guidelines:	Mandatory		
Implementation Considerations:	Use of the "time" or a "date/time" data-type provided by all DBMSs and many other software products is acceptable provided the values can be input and output in the format defined by this standard.		
Development Notes:	Standard:	Service Event Data Model	
	Element:	Service Event Start Time	
	Standard:	ITAC Data Standards	
	Element:	Time	
	Reference:	HL7 Standard	

Element Name:	Second		
Compound Element Name:	Screening Event End Time		
Version:	0		
Status:	Draft	Date Revised	
Standard Category:	Information Standard	Adopted[A]/Rejected[R]	
Standard Sub-category:	Data Standard	Date Adopted/Rejected	
Definition:	The seconds portion of time.		
Storage Format:	Numeric : 2		
Presentation/Display Format:	HH:MM:SS		
Requirement for Standard:	When a health service was delivered is considered core information for a service event.		
Valid Values:	Two digit number from 00 to 59		
Business Rules / Coding Guidelines:	Optional		
Implementation Considerations:	Use of the "time" or a "date/time" data-type provided by all DBMSs and many other software products is acceptable provided the values can be input and output in the format defined by this standard.		
Development Notes:	Standard:	Service Event Data Model	
	Element:	Service Event Start Time	
	Standard:	ITAC Data Standards	
	Element:	Time	
	Reference:	HL7 Standard	

Health Information Standards Committee of Alberta
 Breast Cancer Screening Minimum Data Set

Compound Element Name:	Health Service	Date Revised
Cluster Name	Screening Event	Adopted[A]/Rejected[R]
Version:	0	Date Adopted/Rejected
Status:	Draft	
Standard Category:	Information Standard	
Standard Sub-category:	Data Standard	
Definition:	Health services and activities which may be provided by a program	
Requirement for Standard:	Health services are provided for the purpose of promoting, protecting and maintaining or improving health.	
Component Elements:	<ul style="list-style-type: none"> • Service Code • Service Code System Identifier • Service Code System Version • Service Code System Version Effective Date • Service Code System Version Termination Date • Service Description 	
Business Rules / Coding Guidelines:		
Implementation Considerations:		
Development Notes:	Standard:	Service Event Data Model
	Element:	Service Information

Element Name:	Service Code	
Compound Element Name:	Health Service	
Version:	0	Date Revised
Status:	Draft	Adopted[A]/Rejected[R]
Standard Category:	Information Standard	Date Adopted/Rejected
Standard Sub-category:	Data Standard	
Definition:	This is a symbol (string) that identifies a service.	
Example:	02.04 would refer to the real world concept "Bone Graft to Skull" as defined by ICD9 CM.	
Storage Format:	Alphanumeric : 16	
Presentation/Display Format:		
Requirement for Standard:	Required to ensure screening events are performed	
Valid Values:		
Business Rules / Coding Guidelines:		
Implementation Considerations:		
Development Notes:	Standard:	Service Event Data Model
	Element:	Service Code

Element Name:	Service Code System Identifier	
Compound Element Name:	Health Service	
Version:	0	Date Revised
Status:	Draft	Adopted[A]/Rejected[R]
Standard Category:	Information Standard	Date Adopted/Rejected
Standard Sub-category:	Data Standard	
Definition:	Denotes the code system that defined the service code.	
	Example ICD9 CM	
Storage Format:	Alphanumeric : 16	
Presentation/Display Format:		
Requirement for Standard:	Required to ensure screening events are performed	
Valid Values:		
Business Rules / Coding Guidelines:		
Implementation Considerations:		
Development Notes:	Standard:	Service Event Data Model
	Element:	Service Code System Identifier

Element Name:	Service Code System Version	
Compound Element Name:	Health Service	
Version:	0	
Status:	Draft	Date Revised
Standard Category:	Information Standard	Adopted[A]/Rejected[R]
Standard Sub-category:	Data Standard	Date Adopted/Rejected
Definition:	Version descriptor defined specifically for the given coding scheme.	
Example	v2.3.1	
Storage Format:	Alphanumeric : 16	
Presentation/Display Format:		
Requirement for Standard:	Required to ensure screening events are performed	
Valid Values:		
Business Rules / Coding Guidelines:		
Implementation Considerations:		
Development Notes:	Standard:	Service Event Data Model
	Element:	Service Code System Version

Element Name:	Service Code System Version Effective Date		
Compound Element Name:	Health Service		
Version:	0	Date Revised	
Status:	Draft	Adopted[A]/Rejected[R]	
Standard Category:	Information Standard	Date Adopted/Rejected	
Standard Sub-category:	Data Standard		
Definition:	Date the coding scheme became effective.		
Storage Format:	Date : 8		
Presentation/Display Format:	YYYYMMDD		
Requirement for Standard:	Required to ensure screening events are performed		
Valid Values:	Valid calendar date		
Business Rules / Coding Guidelines:			
Implementation Considerations:			
Development Notes:	Standard:	Service Event Data Model	
	Element:	Service Code System Version Effective Date	

Element Name:	Service Code System Version Termination Date	
Compound Element Name:	Health Service	
Version:	0	
Status:	Draft	Date Revised
Standard Category:	Information Standard	Adopted[A]/Rejected[R]
Standard Sub-category:	Data Standard	Date Adopted/Rejected
Definition:	The end date this version of the code system is effective.	
Storage Format:	Date : 8	
Presentation/Display Format:	YYYYMMDD	
Requirement for Standard:	Required to ensure screening events are performed	
Valid Values:	Valid calendar date	
Business Rules / Coding Guidelines:		
Implementation Considerations:		
Development Notes:	Standard:	Service Event Data Model
	Element:	Service Code System Version Termination Date

Element Name:	Service Description	
Compound Element Name:	Health Service	
Version:	0	
Status:	Draft	Date Revised
Standard Category:	Information Standard	Adopted[A]/Rejected[R]
Standard Sub-category:	Data Standard	Date Adopted/Rejected
Definition:	A sensible name for the service code.	
Example:	" Bone Graft to Skull "	
Storage Format:	Alpha mixed-case : 1600	
Presentation/Display Format:		
Requirement for Standard:	Required to ensure screening events are performed	
Valid Values:		
Business Rules / Coding Guidelines:		
Implementation Considerations:		
Development Notes:	Standard:	Service Event Data Model
	Element:	Service Description

Cluster Name:	Screening Program		
Version:	0		
Status:	Draft		Date Revised
Standard Category:	Information Standard	Adopted[A]/Rejected[R]	
Standard Sub-category:	Data Standard	Date Adopted/Rejected	
Definition:	A screening program is a formalized effort to improve the health of Albertans through preventative measures, usually through early detection		
Component Elements:	<ul style="list-style-type: none"> • Screening Program Name • Eligibility Rule • Program Eligibility • Program Participation 		
Requirement for Standard:	Breast cancer screening (BCS) is a population based preventive health activity, which allows the detection of breast cancer at the early stages of the disease process before the onset of signs and symptoms. A consistent and comprehensive screening approach that focuses on a target population is required.		
Development Notes:	Reference:	AHEAD	
	Element:	Program	

Health Information Standards Committee of Alberta
 Breast Cancer Screening Minimum Data Set

Element Name:	Screening Program Name	
Cluster Name:	Sceening Program	
Version:	0	
Status:	Draft	Date Revised
Standard Category:	Information Standard	Adopted[A]/Rejected[R]
Standard Sub-category:	Data Standard	Date Adopted/Rejected
Definition:	A textual label for a screening program.	
Storage Format:	Alphanumeric : 50	
Presentation/Display Format:		
Requirement for Standard:	Breast cancer screening (BCS) is a population based preventive health activity, which allows the detection of breast cancer at the early stages of the disease process before the onset of signs and symptoms. A consistent and comprehensive screening approach that focuses on a target population is required.	
Valid Values:	N/A	
Business Rules / Coding Guidelines:		
Implementation Considerations:		
Development Notes:	Reference:	AHEAD
	Element:	Program

Compound Data	
Element Name:	Eligibility Rule
Cluster Name	Screening Program
Version:	0
Status:	Draft
Standard Category:	Information Standard
Standard Sub-category:	Data Standard
Date Revised	Adopted[A]/Rejected[R]
Date Adopted/Rejected	
Definition:	Factors / criteria defining the rules for eligibility in a program/service.
Component Elements:	<ul style="list-style-type: none"> • Rule ID • Rule Description • Expiry Rule • Rule Value • Rule Value Unit
Requirement for Standard:	Required for identifying the breast cancer screening target population.
Development Notes:	Reference: AHEAD Element: Eligibility

Element Name:	Rule Id	
Compound Element Name:	Eligibility Rule	
Version:	0	
Status:	Draft	Date Revised
Standard Category:	Information Standard	Adopted[A]/Rejected[R]
Standard Sub-category:	Data Standard	Date Adopted/Rejected
Definition:	Unique identifier of the eligibility rule.	
Storage Format:	Alphanumeric 15	
Presentation/Display Format:		
Requirement for Standard:	Required for identifying the breast cancer screening target population.	
Valid Values:		
Business Rules / Coding Guidelines:		
Implementation Considerations:		
Development Notes:	Reference:	AHEAD
	Element:	Eligibility

Element Name:	Rule Description	
Compound Element Name:	Eligibility Rule	
Version:	0	
Status:	Draft	Date Revised
Standard Category:	Information Standard	Adopted[A]/Rejected[R]
Standard Sub-category:	Data Standard	Date Adopted/Rejected
Definition:	Textual description of the Participant Rule.	
Storage Format:	Alphanumeric : 2000	
Presentation/Display Format:		
Requirement for Standard:	Required for identifying the breast cancer screening target population.	
Valid Values:	N/A	
Business Rules / Coding Guidelines:		
Implementation Considerations:		
Development Notes:	Reference:	AHEAD
	Element:	Eligibility

Element Name:	Expiry Rule	
Compound Element Name:	Eligibility Rule	
Version:	0	
Status:	Draft	Date Revised
Standard Category:	Information Standard	Adopted[A]/Rejected[R]
Standard Sub-category:	Data Standard	Date Adopted/Rejected
Definition:	Boolean expression indicating whether the rule is used to terminate the individuals participation in a screening program.	
Storage Format:	Boolean : 1	
Presentation/Display Format:		
Requirement for Standard:	Required for identifying the breast cancer screening target population.	
Valid Values:	True/False	
Business Rules / Coding Guidelines:		
Implementation Considerations:		
Development Notes:	Reference:	AHEAD
	Element:	Eligibility

Element Name:	Rule Value	
Compound Element Name:	Eligibility Rule	
Version:	0	
Status:	Draft	Date Revised
Standard Category:	Information Standard	Adopted[A]/Rejected[R]
Standard Sub-category:	Data Standard	Date Adopted/Rejected
Definition:	The quantitative value of the participant rule. An example of a participant rule could be the specification of the minimum age for inclusion in a program as 60, the rule value would contain "60".	
Storage Format:	Alphanumeric : 10	
Presentation/Display Format:		
Requirement for Standard:	Required for identifying the breast cancer screening target population.	
Valid Values:	N/A	
Business Rules / Coding Guidelines:		
Implementation Considerations:		
Development Notes:	Reference:	AHEAD
	Element:	Eligibility

Element Name:	Rule Value Unit Of Measure	
Compound Element Name:	Eligibility Rule	
Version:	0	Date Revised
Status:	Draft	Adopted[A]/Rejected[R]
Standard Category:	Information Standard	Date Adopted/Rejected
Standard Sub-category:	Data Standard	
Definition:	Textual description of the units that the "Rule Value" is measured. For example: years, days, etc.	
Storage Format:	Alphanumeric : 20	
Presentation/Display Format:		
Requirement for Standard:	Required for identifying the breast cancer screening target population.	
Valid Values:	N/A	
Business Rules / Coding Guidelines:		
Implementation Considerations:		
Development Notes:	Reference:	AHEAD
	Element:	Eligibility

Compound Data	Program Eligibility		Date Revised
Element Name:	Screening Program		Adopted[A]/Rejected[R]
Cluster Name	0		Date Adopted/Rejected
Version:	Draft		
Status:	Information Standard		
Standard Category:	Data Standard		
Standard Sub-category:	Definition: A program that a stakeholder is eligible to participate in, along with the factors/criteria satisfied to qualify for it.		
Component Elements:	<ul style="list-style-type: none"> • Program Eligibility Start Date • Program Eligibility End Date 		
Requirement for Standard:	Required for identifying the breast cancer screening target population.		
Development Notes:	Reference:	AHEAD	
	Element:	Eligibility	

Element Name:	Program Eligibility Start Date		
Compound Element Name:	Program Eligibility		
Version:	0	Date Revised	
Status:	Draft	Adopted[A]/Rejected[R]	
Standard Category:	Information Standard	Date Adopted/Rejected	
Standard Sub-category:	Data Standard		
Definition:	The first day that the program eligibility rule is in effect.		
Storage Format:	Date : 8		
Presentation/Display Format:	YYYYMMDD		
Requirement for Standard:	Required for identifying the breast cancer screening target population.		
Valid Values:	Valid calendar date		
Business Rules / Coding Guidelines:			
Implementation Considerations:			
Development Notes:	Reference:	AHEAD	
	Element:	Eligibility	

Element Name:	Program Eligibility End Date		
Compound Element Name:	Program Eligibility		
Version:	0	Date Revised	
Status:	Draft	Adopted[A]/Rejected[R]	
Standard Category:	Information Standard	Date Adopted/Rejected	
Standard Sub-category:	Data Standard		
Definition:	The last day that the program eligibility rule is in effect.		
Storage Format:	Date : 8		
Presentation/Display Format:	YYYYMMDD		
Requirement for Standard:	Required for identifying the breast cancer screening target population.		
Valid Values:	Valid calendar date		
Business Rules / Coding Guidelines:			
Implementation Considerations:			
Development Notes:	Reference:	AHEAD	
	Element:	Eligibility	

Compound Data	
Element Name:	Program Participation
Cluster Name	Screening Program
Version:	0
Status:	Draft
Standard Category:	Information Standard
Standard Sub-category:	Data Standard
	Date Revised
	Adopted[A]/Rejected[R]
	Date Adopted/Rejected
Definition:	A record of a stakeholders' participation in a screening program.
Component Elements:	<ul style="list-style-type: none"> • Active • Next Solicitation Type • Next Solicitation Due Date
Requirement for Standard:	Required for identifying the breast cancer screening target population.
Development Notes:	Reference: AHEAD Element: Eligibility

Element Name:	Active	
Compound Element Name:	Program Participation	
Version:	0	
Status:	Draft	Date Revised
Standard Category:	Information Standard	Adopted[A]/Rejected[R]
Standard Sub-category:	Data Standard	Date Adopted/Rejected
Definition:	Boolean expression specifying the participation status of a screening participant.	
Storage Format:	Boolean : 1	
Presentation/Display Format:		
Requirement for Standard:	Required for identifying the breast cancer screening target population.	
Valid Values:	True/False	
Business Rules / Coding Guidelines:		
Implementation Considerations:		
Development Notes:	Reference:	AHEAD
	Element:	Eligibility

Element Name:	Next Solicitation Type	
Compound Element Name:	Prgram Participation	
Version:	0	
Status:	Draft	Date Revised
Standard Category:	Information Standard	Adopted[A]/Rejected[R]
Standard Sub-category:	Data Standard	Date Adopted/Rejected
Definition:	Defines the next solicitation type required for a stakeholder.	
Storage Format:	Alpha only : 15	
Presentation/Display Format:		
Requirement for Standard:	Required for identifying the breast cancer screening target population.	
Valid Values:	Initial Invite Reminder1 Reminder2 Recall	
Business Rules / Coding Guidelines:		
Implementation Considerations:		
Development Notes:	Reference:	AHEAD
	Element:	Eligibility

Element Name:	Participant Next Solicitation Due Date		
Compound Element Name:	Program Participation		
Version:	0		
Status:	Draft	Date Revised	
Standard Category:	Information Standard	Adopted[A]/Rejected[R]	
Standard Sub-category:	Data Standard	Date Adopted/Rejected	
Definition:	Calendar date identifying the next date to solicit a screening participant.		
Storage Format:	Date : 8		
Presentation/Display Format:	YYYYMMDD		
Requirement for Standard:	Required for identifying the breast cancer screening target population.		
Valid Values:	Valid calendar date.		
Business Rules / Coding Guidelines:			
Implementation Considerations:			
Development Notes:	Reference:	AHEAD	
	Element:	Eligibility	

Cluster Name:	Person Medical Diagnosis		
Version:	0		
Status:	Draft		Date Revised
Standard Category:	Information Standard	Adopted[A]/Rejected[R]	
Standard Sub-category:	Data Standard	Date Adopted/Rejected	
Definition:	The recognized or view of the health and well being of an individual.		
Component Elements:	<ul style="list-style-type: none"> • Person Medical Diagnosis Start Date • Person Medical Diagnosis End Date • Health Condition 		
Requirement for Standard:	To record health conditions of an program participant that either removes the individual from a screening program or adds the individual to a screening program.		
Development Notes:	Reference:	alberta we/net Conceptual Clinical Data Model	
	Element:	Person Medical Diagnosis	

Health Information Standards Committee of Alberta
Breast Cancer Screening Minimum Data Set

Element Name:	Person Medical Diagnosis End Date		
Cluster Name:	Person Medical Diagnosis		
Version:	0		
Status:	Draft	Date Revised	
Standard Category:	Information Standard	Adopted[A]/Rejected[R]	
Standard Sub-category:	Data Standard	Date Adopted/Rejected	
Definition:	The last day that the health condition was assessed for the stakeholder.		
Storage Format:	Date : 8		
Presentation/Display Format:	YYYYMMDD		
Requirement for Standard:	To record health conditions of a program participant that either removes the individual from a screening program or adds the individual to a screening program.		
Valid Values:	Valid calendar date.		
Business Rules / Coding Guidelines:			
Implementation Considerations:			
Development Notes:	Reference:	alberta we/het Conceptual Clinical Data Model	
	Element:	Person Medical Diagnosis	

Health Information Standards Committee of Alberta
Breast Cancer Screening Minimum Data Set

Element Name:	Person Medical Diagnosis Start Date		
Cluster Name:	Person Medical Diagnosis		
Version:	0		
Status:	Draft	Date Revised	
Standard Category:	Information Standard	Adopted[A]/Rejected[R]	
Standard Sub-category:	Data Standard	Date Adopted/Rejected	
Definition:	The first day that the health condition was assessed for the stakeholder.		
Storage Format:	Date : 8		
Presentation/Display Format:	YYYYMMDD		
Requirement for Standard:	To record health conditions of a program participant that either removes the individual from a screening program or adds the individual to a screening program.		
Valid Values:	Valid calendar date		
Business Rules / Coding Guidelines:			
Implementation Considerations:			
Development Notes:	Reference:	alberta we/het Conceptual Clinical Data Model	
	Element:	Person Medical Diagnosis	

Compound Element		
Name:	Health Condition	
Cluster Name	Person Medical Diagnosis	Date Revised
Version:	0	Adopted[A]/Rejected[R]
Status:	Draft	Date Adopted/Rejected
Standard Category:	Information Standard	
Standard Sub-category:	Data Standard	
Definition:	Diagnosis of a screening participants health condition.	
Requirement for Standard:	To record health conditions of an program participant that either removes the individual from a screening program or adds the individual to a screening program.	
Component Elements:	<ul style="list-style-type: none"> • Diagnosis Code • Diagnosis Code System Identifier • Diagnosis Code System Version • Diagnosis Code System Version Effective Date • Diagnosis Code System Version Termination Date • Diagnosis Description 	
Business Rules / Coding Guidelines:		
Implementation Considerations:		
Development Notes:	Standard:	Service Event Data Model
	Element:	Service Information

Health Information Standards Committee of Alberta
 Breast Cancer Screening Minimum Data Set

Element Name:	Diagnosis Code	
Compound Element Name:	Health Condition	
Version:	0	
Status:	Draft	Date Revised
Standard Category:	Information Standard	Adopted[A]/Rejected[R]
Standard Sub-category:	Data Standard	Date Adopted/Rejected
Definition:	This is a symbol (string) that identifies a health condition.	
Example:	784.0 would refer to the real world concept "headache" as defined by ICD9 CM.	
Storage Format:	Alphanumeric : 16	
Presentation/Display Format:		
Requirement for Standard:	To record health conditions of a program participant that either removes the individual from a screening program or adds the individual to a screening program.	
Valid Values:	ICD 10	
Business Rules / Coding Guidelines:		
Implementation Considerations:		
Development Notes:	Standard:	Service Event Data Model
	Element:	Service Code

Element Name:	Diagnosis Code System Identifier	
Compound Element Name:	Health Condition	
Version:	0	
Status:	Draft	Date Revised
Standard Category:	Information Standard	Adopted[A]/Rejected[R]
Standard Sub-category:	Data Standard	Date Adopted/Rejected
Definition:	Denotes the code system that defined the diagnostic code. Example ICD9 CM, ICD10	
Storage Format:	Alphanumeric : 16	
Presentation/Display Format:		
Requirement for Standard:	To record health conditions of a program participant that either removes the individual from a screening program or adds the individual to a screening program.	
Valid Values:		
Business Rules / Coding Guidelines:		
Implementation Considerations:		
Development Notes:	Standard:	Service Event Data Model
	Element:	Service Code System Identifier

Element Name:	Diagnosis Code System Version	
Compound Element Name:	Health Condition	
Version:	0	
Status:	Draft	Date Revised
Standard Category:	Information Standard	Adopted[A]/Rejected[R]
Standard Sub-category:	Data Standard	Date Adopted/Rejected
Definition:	Version descriptor defined specifically for the given coding scheme.	
Example	v2.3.1	
Storage Format:	Alphanumeric : 16	
Presentation/Display Format:		
Requirement for Standard:	To record health conditions of a program participant that either removes the individual from a screening program or adds the individual to a screening program.	
Valid Values:		
Business Rules / Coding Guidelines:		
Implementation Considerations:		
Development Notes:	Standard:	Service Event Data Model
	Element:	Service Code System Version

Element Name:	Diagnosis Code System Version Effective Date		
Compound Element Name:	Health Condition		
Version:	0		
Status:	Draft		Date Revised
Standard Category:	Information Standard	Adopted[A]/Rejected[R]	
Standard Sub-category:	Data Standard	Date Adopted/Rejected	
Definition:	Date the coding scheme became effective.		
Storage Format:	Date : 8		
Presentation/Display Format:	YYYYMMDD		
Requirement for Standard:	To record health conditions of an program participant that either removes the individual from a screening program or adds the individual to a screening program.		
Valid Values:	Valid calendar date		
Business Rules / Coding Guidelines:			
Implementation Considerations:			
Development Notes:	Standard:	Service Event Data Model	
	Element:	Service Code System Version Effective Date	

Element Name	Diagnosis Code System Version Termination Date	
Compound Element Name:	Health Condition	
Version:	0	
Status:	Draft	Date Revised
Standard Category:	Information Standard	Adopted[A]/Rejected[R]
Standard Sub-category:	Data Standard	Date Adopted/Rejected
Definition:	The last day the coding scheme is effective.	
Storage Format:	Date : 8	
Presentation/Display Format:	YYYYMMDD	
Requirement for Standard:	To record health conditions of an program participant that either removes the individual from a screening program or adds the individual to a screening program.	
Valid Values:	Valid calendar date	
Business Rules / Coding Guidelines:		
Implementation Considerations:		
Development Notes:	Standard:	Service Event Data Model
	Element:	Service Code System Version Termination Date

Element Name:	Diagnosis Description	
Compound Element Name:	Health Condition	
Version:	0	
Status:	Draft	Date Revised
Standard Category:	Information Standard	Adopted[A]/Rejected[R]
Standard Sub-category:	Data Standard	Date Adopted/Rejected
Definition:	A sensible name for the diagnostic code.	
Example:	"HEADACHE"	
Storage Format:	Alpha mixed-case : 1600	
Presentation/Display Format:		
Requirement for Standard:	To record health conditions of an program participant that either removes the individual from a screening program or adds the individual to a screening program.	
Valid Values:		
Business Rules / Coding Guidelines:		
Implementation Considerations:		
Development Notes:	Standard:	Service Event Data Model
	Element:	Service Description

Health Information Standards Committee of Alberta
 Breast Cancer Screening Minimum Data Set

Cluster Name:	Stakeholder Information		
Version:	0		
Status:	Draft		Date Revised
Standard Category:	Information Standard	Adopted[A]/Rejected[R]	
Standard Sub-category:	Data Standard	Date Adopted/Rejected	
Definition:	A Person or Group of interest to the health system of Alberta or the business of the Alberta's health system. A Stakeholder can assume many roles in the health system including the role of a Recipient and a Provider.		
Component Elements:	<ul style="list-style-type: none"> • ULI • Organization Name • RHA ID • Person • Health System Role • Stakeholder In A Role • Stakeholder In A Role Relationship 		
Requirement for Standard:	Require in identifying stakeholders and the roles they play within a screening program.		
Development Notes:	Standard:	Stakeholder Basic Demographic Data Standard	
	Reference:	AHEAD	

Health Information Standards Committee of Alberta
Breast Cancer Screening Minimum Data Set

Element Name:	ULI	
Cluster Name:	Stakeholder Information	
Version:	0	
Status:	Draft	Date Revised
Standard Category:	Information Standard	Adopted[A]/Rejected[R]
Standard Sub-category:	Data Standard	Date Adopted/Rejected
Definition:	Unique lifetime identifier for a stakeholder.	
Storage Format:	Numeric : 9	
Presentation/Display Format:	99999 - 9999	
Requirement for Standard:	Stakeholder Demographics Standard ULI	
Valid Values:	Valid Value Set for ULI's comprises numbers already assigned by Alberta Health and Wellness' Central Stakeholder Registry.	
Business Rules / Coding Guidelines:		
Implementation Considerations:		
Development Notes:	Standard:	Stakeholder Basic Demographic Standard
	Element:	Unique Lifetime Identifier

Health Information Standards Committee of Alberta
 Breast Cancer Screening Minimum Data Set

Element Name:	Organization Name	
Cluster Name:	Stakeholder Information	
Version:	0	
Status:	Draft	Date Revised
Standard Category:	Information Standard	Adopted[A]/Rejected[R]
Standard Sub-category:	Data Standard	Date Adopted/Rejected
Definition:	Textual label assigned to organization.	
Storage Format:	Alphanumeric : 150	
Presentation/Display Format:		
Requirement for Standard:	In the context of the breast cancer screening program, the organization of interest are the 17 Regional Health Authorities, the Alberta Cancer Board, and Alberta Health & Wellness. This list may change over time.	
Valid Values:	N/A	
Business Rules / Coding Guidelines:		
Implementation Considerations:		
Development Notes:	Standard:	Stakeholder Basic Demographic Standard
	Element:	Organization Name

Health Information Standards Committee of Alberta
Breast Cancer Screening Minimum Data Set

Element Name:	RHA ID																																					
Cluster Name:	Stakeholder Information																																					
Version:	0																																					
Status:	Draft	Date Revised																																				
Standard Category:	Information Standard	Adopted[A]/Rejected[R]																																				
Standard Sub-category:	Data Standard	Date Adopted/Rejected																																				
Definition:	Regional Health Authority identifier. (An identification assigned to an organization by a jurisdiction other than a provincial health ministry.)																																					
Storage Format:	Alphanumeric: 15																																					
Presentation/Display Format:																																						
Requirement for Standard:	In the context of the breast cancer screening program, the organization of interest are the 17 Regional Health Authorities.																																					
Valid Values:	<table border="0"> <thead> <tr> <th><u>RHA Code</u></th> <th><u>RHA Legal Name</u></th> </tr> </thead> <tbody> <tr><td>01</td><td>Chinook Regional Health Authority</td></tr> <tr><td>02</td><td>Palliser Health Authority</td></tr> <tr><td>03</td><td>Headwaters Health Authority</td></tr> <tr><td>04</td><td>Calgary Regional Health Authority</td></tr> <tr><td>05</td><td>Regional Health Authority 5</td></tr> <tr><td>06</td><td>David Thompson Regional Health Authority</td></tr> <tr><td>07</td><td>East Central Regional Health Authority</td></tr> <tr><td>08</td><td>Westview Regional Health Authority</td></tr> <tr><td>09</td><td>Crossroads Regional Health Authority</td></tr> <tr><td>10</td><td>Capital Health Authority</td></tr> <tr><td>11</td><td>Aspen Regional Health Authority</td></tr> <tr><td>12</td><td>Lakeland Regional Health Authority</td></tr> <tr><td>13</td><td>Mistahia Regional Health Authority</td></tr> <tr><td>14</td><td>Peace Regional Health Authority</td></tr> <tr><td>15</td><td>Keeweenok Lakes Regional Health Authority</td></tr> <tr><td>16</td><td>Northern Lights Regional Health Authority</td></tr> <tr><td>17</td><td>Northwestern Regional Health Authority</td></tr> </tbody> </table>		<u>RHA Code</u>	<u>RHA Legal Name</u>	01	Chinook Regional Health Authority	02	Palliser Health Authority	03	Headwaters Health Authority	04	Calgary Regional Health Authority	05	Regional Health Authority 5	06	David Thompson Regional Health Authority	07	East Central Regional Health Authority	08	Westview Regional Health Authority	09	Crossroads Regional Health Authority	10	Capital Health Authority	11	Aspen Regional Health Authority	12	Lakeland Regional Health Authority	13	Mistahia Regional Health Authority	14	Peace Regional Health Authority	15	Keeweenok Lakes Regional Health Authority	16	Northern Lights Regional Health Authority	17	Northwestern Regional Health Authority
<u>RHA Code</u>	<u>RHA Legal Name</u>																																					
01	Chinook Regional Health Authority																																					
02	Palliser Health Authority																																					
03	Headwaters Health Authority																																					
04	Calgary Regional Health Authority																																					
05	Regional Health Authority 5																																					
06	David Thompson Regional Health Authority																																					
07	East Central Regional Health Authority																																					
08	Westview Regional Health Authority																																					
09	Crossroads Regional Health Authority																																					
10	Capital Health Authority																																					
11	Aspen Regional Health Authority																																					
12	Lakeland Regional Health Authority																																					
13	Mistahia Regional Health Authority																																					
14	Peace Regional Health Authority																																					
15	Keeweenok Lakes Regional Health Authority																																					
16	Northern Lights Regional Health Authority																																					
17	Northwestern Regional Health Authority																																					
Business Rules / Coding Guidelines:																																						
Implementation Considerations:	The RHA identifier is an alternate organization identifier																																					
Development Notes:	Standard:	Stakeholder Basic Demographic Standard																																				
	Element:	Alternate Organization Identifier																																				

Health Information Standards Committee of Alberta
 Breast Cancer Screening Minimum Data Set

Compound Element Name: Person	Stakeholder Information	Date Revised
Cluster Name	0	Adopted[A]/Rejected[R]
Version:	Draft	Date Adopted/Rejected
Status:	Information Standard	
Standard Category:	Data Standard	
Standard Sub-category:	Definition: A human being, alive or not, of interest to the health system	
Requirement for Standard:	The Provincial Health Number is the primary means by which individuals are identified, but in the absence of such a unique identifier, personal identification information such as name, birth date, gender and death date are sufficient to provide accurate and positive identification	
Component Elements:	<ul style="list-style-type: none"> • Birth Date • Gender • Death Date • Death Indicator • Given Name • Last Name • Middle Name • Prefix 	
Business Rules / Coding Guidelines:		
Implementation Considerations:		
Development Notes:	Standard:	Stakeholder Basic Demographic Standard
	Element:	Person Identification Information

Health Information Standards Committee of Alberta
Breast Cancer Screening Minimum Data Set

Element Name:	Birth Date	
Compound Element Name:	Person	
Version:	0	
Status:	Draft	
Standard Category:	Information Standard	Date Revised
Standard Sub-category:	Data Standard	Adopted[A]/Rejected[R]
		Date Adopted/Rejected
Definition:	The calendar date on which a person was born as reported upon registration.	
Storage Format:	Date : 8	
Presentation/Display Format:	YYYYMMDD	
Requirement for Standard:	Used to identify target population.	
Valid Values:	Valid calendar date.	
Business Rules / Coding Guidelines:		
Implementation Considerations:		
Development Notes:	Standard:	Stakeholder Basic Demographic Standard
	Element:	Birth Date

Health Information Standards Committee of Alberta
 Breast Cancer Screening Minimum Data Set

Element Name:	Death Date	
Compound Element Name:	Person	
Version:	0	
Status:	Draft	
Standard Category:	Information Standard	Date Revised Adopted[A]/Rejected[R]
Standard Sub-category:	Data Standard	Date Adopted/Rejected
Definition:	The calendar date on which person is pronounced 'deceased' .	
Storage Format:	Date : 8	
Presentation/Display Format:	YYYYMMDD	
Requirement for Standard:	Used to identify target population.	
Valid Values:	Valid calendar date.	
Business Rules / Coding Guidelines:		
Implementation Considerations:		
Development Notes:	Standard:	Stakeholder Basic Demographic Standard
	Element:	Death Date

Element Name:	Gender	
Compound Element Name:	Person	
Version:	0	
Status:	Draft	Date Revised
Standard Category:	Information Standard	Adopted[A]/Rejected[R]
Standard Sub-category:	Data Standard	Date Adopted/Rejected
Definition:	A code depicting the biological sex of the person as reported upon registration.	
Storage Format:	Alpha only : 1	
Presentation/Display Format:		
Requirement for Standard:	Used to identify target population.	
Valid Values:	F - Female M - Male O - Other U - Unknown	
Business Rules / Coding Guidelines:		
Implementation Considerations:		
Development Notes:	Standard:	Stakeholder Basic Demographic Standard
	Element:	Gender

Element Name:	Death Indicator		
Compound Element Name:	Person	Date Revised	
Version:	0	Adopted[A]/Rejected[R]	
Status:	Draft	Date Adopted/Rejected	
Standard Category:	Information Standard		
Standard Sub-category:	Data Standard		
Definition:	Indicates whether an individual is deceased.		
Storage Format:	Numeric : 1		
Presentation/Display Format:	9		
Requirement for Standard:	Used to identify target population.		
Valid Values:	1-alive 2-dead		
Business Rules / Coding Guidelines:			
Implementation Considerations:			
Development Notes:			

Element Name:	Given Name	
Compound Element Name:	Person	
Version:	0	
Status:	Draft	Date Revised
Standard Category:	Information Standard	Adopted[A]/Rejected[R]
Standard Sub-category:	Data Standard	Date Adopted/Rejected
Definition:	The first name of a screening program candidate.	
Storage Format:	Alphanumeric : 50	
Presentation/Display Format:		
Requirement for Standard:	Used to identify target population.	
Valid Values:	N/A	
Business Rules / Coding Guidelines:		
Implementation Considerations:		
Development Notes:	Standard:	Stakeholder Basic Demographic Standard
	Element:	Given Name

Health Information Standards Committee of Alberta
Breast Cancer Screening Minimum Data Set

Element Name:	Last Name	
Compound Element Name:	Person	
Version:	0	
Status:	Draft	Date Revised
Standard Category:	Information Standard	Adopted[A]/Rejected[R]
Standard Sub-category:	Data Standard	Date Adopted/Rejected
Definition:	The full surname or family name of a screening program candidate.	
Storage Format:	Alphanumeric : 50	
Presentation/Display Format:		
Requirement for Standard:	Used to identify target population.	
Valid Values:	N/A	
Business Rules / Coding Guidelines:	<ul style="list-style-type: none"> - Last Name is mandatory - Hyphens, apostrophe's and other special characters are allowed 	
Implementation Considerations:		
Development Notes:	Standard:	Stakeholder Basic Demographic Standard
	Element:	Last Name

Element Name:	Middle Name	
Compound Element Name:	Person	
Version:	0	
Status:	Draft	Date Revised
Standard Category:	Information Standard	Adopted[A]/Rejected[R]
Standard Sub-category:	Data Standard	Date Adopted/Rejected
Definition:	The other given name of a screening program candidate.	
Storage Format:	Alphanumeric : 50	
Presentation/Display Format:		
Requirement for Standard:	Used to identify target population.	
Valid Values:	N/A	
Business Rules / Coding Guidelines:		
Implementation Considerations:		
Development Notes:	Standard:	Stakeholder Basic Demographic Standard
	Element:	Person Name

Health Information Standards Committee of Alberta
Breast Cancer Screening Minimum Data Set

Element Name:	Prefix	
Compound Element Name:	Person	
Version:	0	
Status:	Draft	Date Revised
Standard Category:	Information Standard	Adopted[A]/Rejected[R]
Standard Sub-category:	Data Standard	Date Adopted/Rejected
Definition:	The title that usually precedes a person's name to identify social status.	
Storage Format:	Alphanumeric : 5	
Presentation/Display Format:		
Requirement for Standard:		
Valid Values:	Capt	Captain
	Chief	Chief
	Cst	Constable
	Corp	Corporal
	Dr	Doctor
	Fr	Father
	Hon	Honourable
	Lt	Lieutenant
	Madam	Madam
	Mme	Madame
	Mlle	Mademoiselle
	Major	Major
	Mayor	Mayor
	Miss	Miss
	Mr	Mister
	Mssr	Monsieur
	Mrs	Mrs
	Ms	Ms
	Prof	Professor
	Reeve	Reeve
	Rev	Reverend
	Rt	Right
	Sen	Senator
	Sgt	Sergeant
Business Rules / Coding Guidelines:		
Implementation Considerations:		
Development Notes:	Standard:	Stakeholder Basic Demographic Standard
	Element:	Prefix

Compound Element	
Name:	Health System Role
Cluster Name	Stakeholder Information
Version:	0
Status:	Draft
Standard Category:	Information Standard
Standard Sub-category:	Data Standard
Date Revised	Adopted[A]/Rejected[R]
Date Adopted/Rejected	
Definition:	Defines roles recognized by the health system that participate in events affecting the health of people. Roles are names assigned to groups of responsibilities.
Requirement for Standard:	The ability of a person to perform functions on the system will be dependent on their role.
Component Elements:	<ul style="list-style-type: none"> • Health System Role ID • Health System Role Type
Business Rules / Coding Guidelines:	
Implementation Considerations:	
Development Notes:	Reference: AHEAD Element: Stakeholder Role

Health Information Standards Committee of Alberta
 Breast Cancer Screening Minimum Data Set

Element Name:	Health System Role ID
Cluster Name:	Result Contact Information
Version:	0
Status:	Draft
Standard Category:	Information Standard
Standard Sub-category:	Data Standard
	Date Revised Adopted[A]/Rejected[R] Date Adopted/Rejected
Definition:	Defines roles recognized by the health system that participate in events affecting the health of people. Roles are names assigned to groups of responsibilities.
Storage Format:	Numeric : 10
Presentation/Display Format:	
Requirement for Standard:	Health system roles are used to determine privileges and accountability of health service providers.
Valid Values:	Role identifiers assigned by Alberta Health and Wellness.
Business Rules / Coding Guidelines:	
Implementation Considerations:	
Development Notes:	AHEAD Data Architecture: The Stakeholder Role defines the responsibilities (the obligation to act or make a decision) of stakeholders recognized by the health system as they participate in events affecting the health of people. Each role also has associated Business Rules which govern the playing of the role. Stakeholder Role defines the roles independent of which Stakeholders are assigned to the role.

Element Name:	Health System Role Type		
Compound Element Name:	Health System Role		
Version:	0		
Status:	Draft		Date Revised
Standard Category:	Information Standard	Adopted[A]/Rejected[R]	
Standard Sub-category:	Data Standard	Date Adopted/Rejected	
Definition:	Textual definition of a health system role.		
Storage Format:	Alpha mixed-case : 4		
Presentation/Display Format:			
Requirement for Standard:	The ability of a person to perform functions on the system will be dependent on their role.		
Valid Values:	<p>Role identifiers assigned by Alberta Health and Wellness.</p> <ul style="list-style-type: none"> • PROV - Provider—a person or organization when they are providing goods or services in the health system. • GOVR - Governor—a person or organization when they are making decisions. • ADVR - Advisor – a person or group providing advice to a Governor. • MNGR -Manager—a person or organization when they are allocating resources to get work done. • RCPT - Recipient—a person or group when they are receiving goods or services from the health system. • RSHR - Researcher—a person or group when they are testing hypotheses to further the state of knowledge about any aspect of the health system. • EDUC - Educator—a person or group when they are increasing the skills of people. • VLTR - Volunteer—a person or group when they are providing services without monetary compensation. • FMBR - Family Member—a person who is related to other people in a family (by whatever definition). <p>The above roles will evolve over time.</p>		
Business Rules / Coding Guidelines:			
Implementation Considerations:			
Development Notes:	Reference:	AHEAD	
	Element:	Stakeholder Role	

Compound Element	
Name:	Stakeholder In A Role
Cluster Name	Stakeholder Information
Version:	0
Status:	Draft
Standard Category:	Information Standard
Standard Sub-category:	Data Standard
	Date Revised
	Adopted[A]/Rejected[R]
	Date Adopted/Rejected
Definition:	Defines a stakeholder within a role
Requirement for Standard:	The ability of a person to perform functions on the system will be dependent on their role.
Component Elements:	<ul style="list-style-type: none"> • Stakeholder In A Role Start Date • Stakeholder In A Role End Date
Business Rules / Coding Guidelines:	
Implementation Considerations:	
Development Notes:	Reference: AHEAD Element: Stakeholder Role

Element Name:	Stakeholder In A Role Start Date		
Compound Element			
Name:	Stakeholder In A Role		
Version:	0		
Status:	Draft	Date Revised	
Standard Category:	Information Standard	Adopted[A]/Rejected[R]	
Standard Sub-category:	Data Standard	Date Adopted/Rejected	
Definition:	The first day that the stakeholder is associated with a role.		
Storage Format:	Date : 8		
Presentation/Display Format:	YYYYMMDD		
Requirement for Standard:	The ability of a person to perform functions on the system will be dependent on their role.		
Valid Values:	Valid calendar date		
Business Rules / Coding Guidelines:			
Implementation Considerations:			
Development Notes:	Reference:	AHEAD	
	Element:	Stakeholder Role	

Element Name:	Stakeholder In A Role End Date		
Compound Element			
Name:	Stakeholder In A Role		
Version:	0		
Status:	Draft		Date Revised
Standard Category:	Information Standard	Adopted[A]/Rejected[R]	
Standard Sub-category:	Data Standard	Date Adopted/Rejected	
Definition:	The last day that the stakeholder is associated with a role.		
Storage Format:	Date : 8		
Presentation/Display Format:	YYYYMMDD		
Requirement for Standard:	The ability of a person to perform functions on the system will be dependent on their role.		
Valid Values:	Valid calendar date		
Business Rules / Coding Guidelines:			
Implementation Considerations:			
Development Notes:	Reference:	AHEAD	
	Element:	Stakeholder Role	

Compound Element	
Name:	Stakeholder In A Role Relationship
Cluster Name	Stakeholder Information
Version:	0
Status:	Draft
Standard Category:	Information Standard
Standard Sub-category:	Data Standard
Date Revised	Adopted[A]/Rejected[R]
Date Adopted/Rejected	
Definition:	Defines relationships between stakeholders within roles.
Requirement for Standard:	The ability of a person to perform functions on the system will be dependent on their role.
Component Elements:	<ul style="list-style-type: none"> • Stakeholder In A Role Relationship Start Date • Stakeholder In A Role Relationship End Date
Business Rules / Coding Guidelines:	
Implementation Considerations:	
Development Notes:	Reference: AHEAD Element: Stakeholder Role Relationship

Element Name:	Stakeholder In A Role Relationship Start Date	
Compound Element Name:	Stakeholder In A Role Relationship	
Version:	0	
Status:	Draft	Date Revised
Standard Category:	Information Standard	Adopted[A]/Rejected[R]
Standard Sub-category:	Data Standard	Date Adopted/Rejected
Definition:	The first day the stakeholder in a role is related to another stakeholder	
Storage Format:	Date : 8	
Presentation/Display Format:	YYYYMMDD	
Requirement for Standard:	The ability of a person to perform functions on the system will be dependent on their role.	
Valid Values:	Valid calendar date	
Business Rules / Coding Guidelines:		
Implementation Considerations:		
Development Notes:	Reference:	AHEAD
	Element:	Stakeholder Role Relationship

Element Name:	Stakeholder In A Role Relationship End Date	
Compound Element Name:	Stakeholder In A Role Relationship	
Version:	0	
Status:	Draft	Date Revised
Standard Category:	Information Standard	Adopted[A]/Rejected[R]
Standard Sub-category:	Data Standard	Date Adopted/Rejected
Definition:	The last day the stakeholder in a role is related to another stakeholder.	
Storage Format:	Date : 8	
Presentation/Display Format:	YYYYMMDD	
Requirement for Standard:	The ability of a person to perform functions on the system will be dependent on their role.	
Valid Values:	Valid calendar date.	
Business Rules / Coding Guidelines:		
Implementation Considerations:		
Development Notes:	Reference:	AHEAD
	Element:	Stakeholder Role Relationship

Appendix A - Class Diagram: Logical View BCSP

